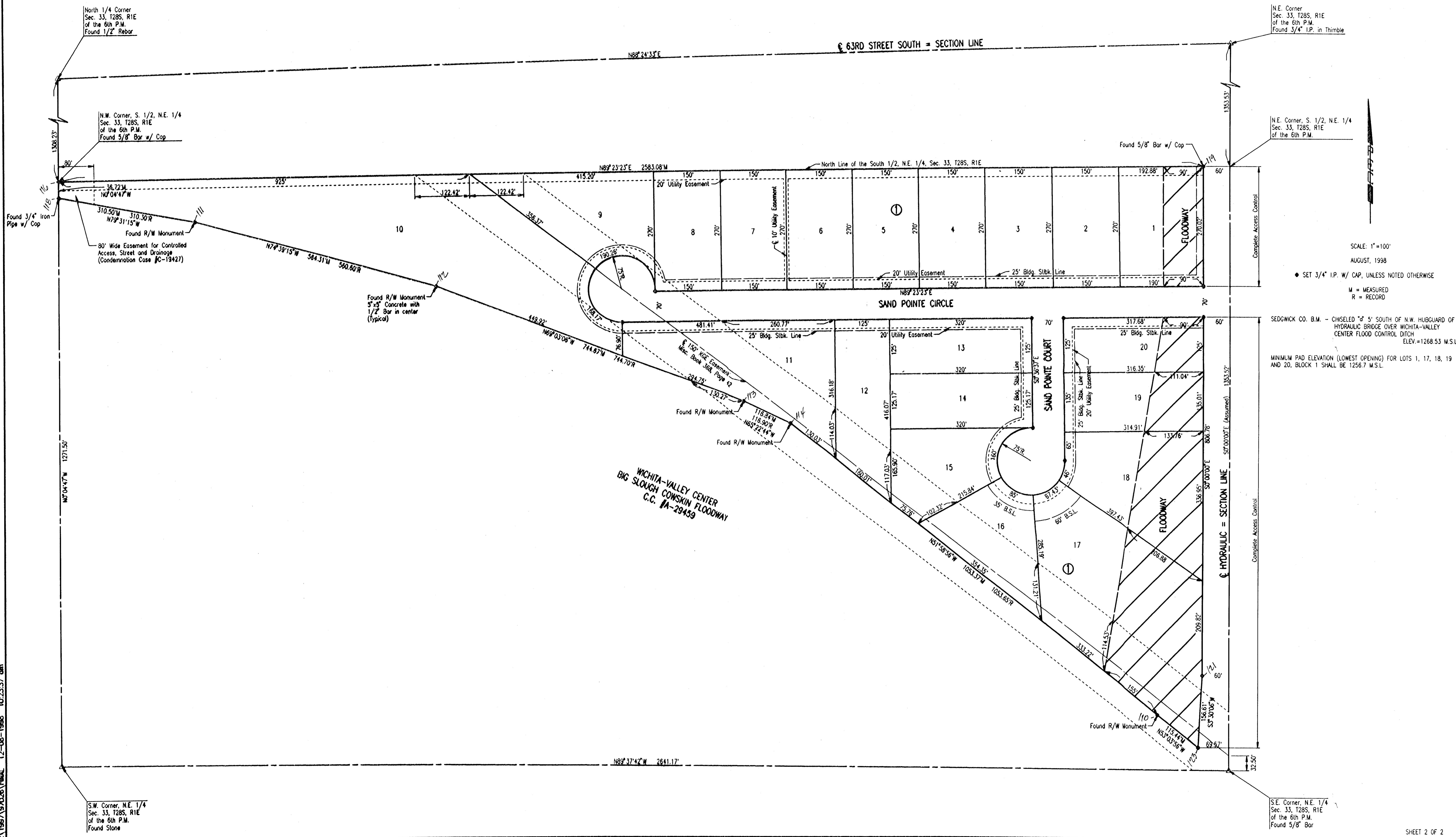


SAND POINTE ADDITION TO SEDGWICK COUNTY, KANSAS



N.E. Corner
Sec. 33, T28S, R1E
of the 6th P.M.
Found 3/4" I.P. in Thimble

N.E. Corner, S. 1/2, N.E. 1/4
Sec. 33, T28S, R1E
of the 6th P.M.

SCALE: 1"=100'
AUGUST, 1998

• SET 3/4" I.P. W/ CAP, UNLESS NOTED OTHERWISE
M = MEASURED
R = RECORD

SEDGWICK CO. B.M. - CHISELED 7" 5' SOUTH OF N.W. HUBGUARD OF
HYDRAULIC BRIDGE OVER WICHITA-VALLEY
CENTER FLOOD CONTROL DITCH
ELEV.=1268.53 M.S.L.

MINIMUM PAD ELEVATION (LOWEST OPENING) FOR LOTS 1, 17, 18, 19
AND 20, BLOCK 1 SHALL BE 1256.7 M.S.L.

WICHITA-VALLEY CENTER
BIG SLOUGH COWSKIN FLOODWAY
C.C. #A-29459

DSNR, SANCHEZ OPER. DEP. SCALE: 1"=100.00
 C:\1997\197026\PLAT 12-08-1998 10:23:37 am