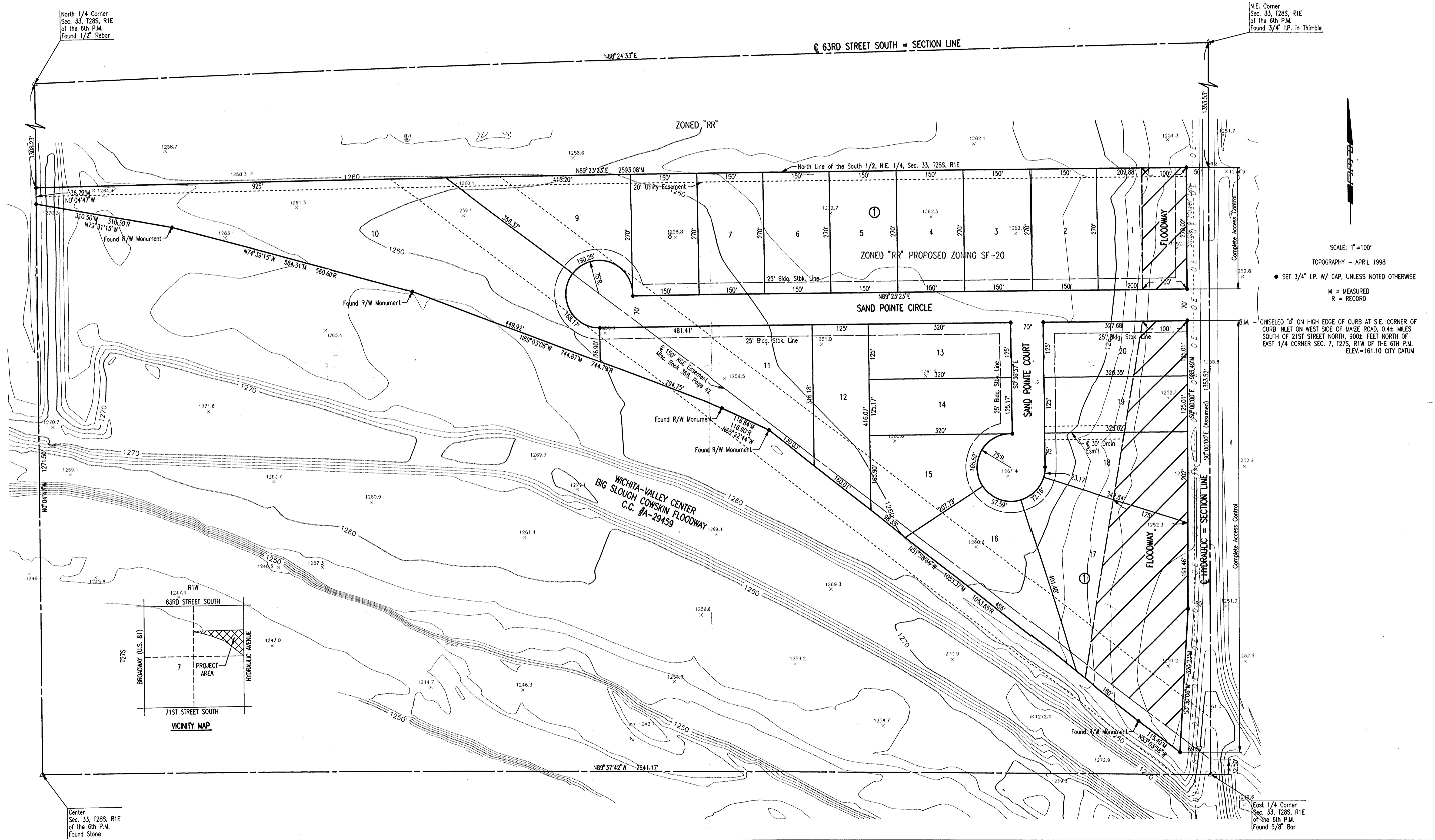


PRELIMINARY PLAT OF  
**SAND POINTE ADDITION**  
 TO SEDGWICK COUNTY, KANSAS

OWNER: WILDCAT DEVELOPERS, INC.  
 c/o RON MEYER  
 6615 S. GROVE  
 WICHITA, KANSAS 67233

ENGINEER: PROFESSIONAL ENGINEERING CONSULTANTS, P.A.  
 303 S. TOPEKA  
 WICHITA, KANSAS 67202



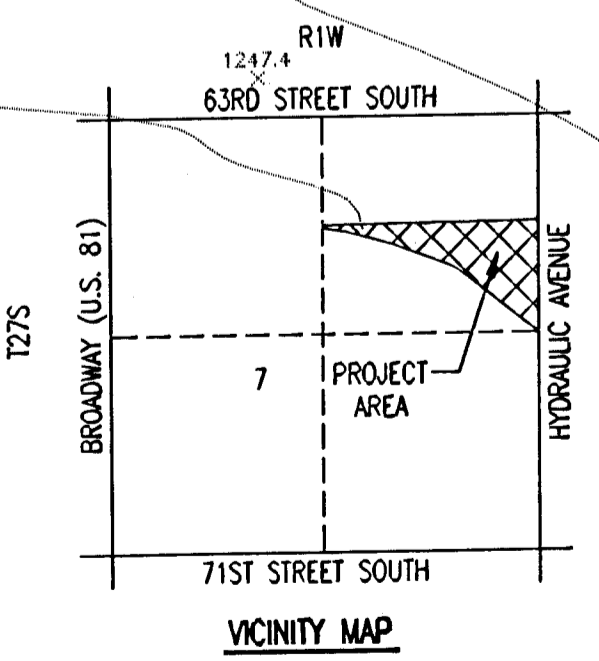
N.E. Corner  
 Sec. 33, T28S, R1E  
 of the 6th P.M.  
 Found 3/4" I.P. in Thimble

North 1/4 Corner  
 Sec. 33, T28S, R1E  
 of the 6th P.M.  
 Found 1/2" Rebar



SCALE: 1"=100'  
 TOPOGRAPHY - APRIL 1998  
 • SET 3/4" I.P. W/ CAP, UNLESS NOTED OTHERWISE  
 M = MEASURED  
 R = RECORD

B.M. CHISELED "d" ON HIGH EDGE OF CURB AT S.E. CORNER OF CURB INLET ON WEST SIDE OF MAIZE ROAD, 0.4± MILES SOUTH OF 21ST STREET NORTH, 900± FEET NORTH OF EAST 1/4 CORNER SEC. 7, T27S, R1W OF THE 6TH P.M. ELEV.=161.10 CITY DATUM



DSNR, SANCHEZ OPER. DEP. SCALE: 1"=100.00  
 C:\1997\97026\PRELIM\_05-15-1998\_08:32:07.am

Center  
 Sec. 33, T28S, R1E  
 of the 6th P.M.  
 Found Stone

East 1/4 Corner  
 Sec. 33, T28S, R1E  
 of the 6th P.M.  
 Found 5/8" Bar