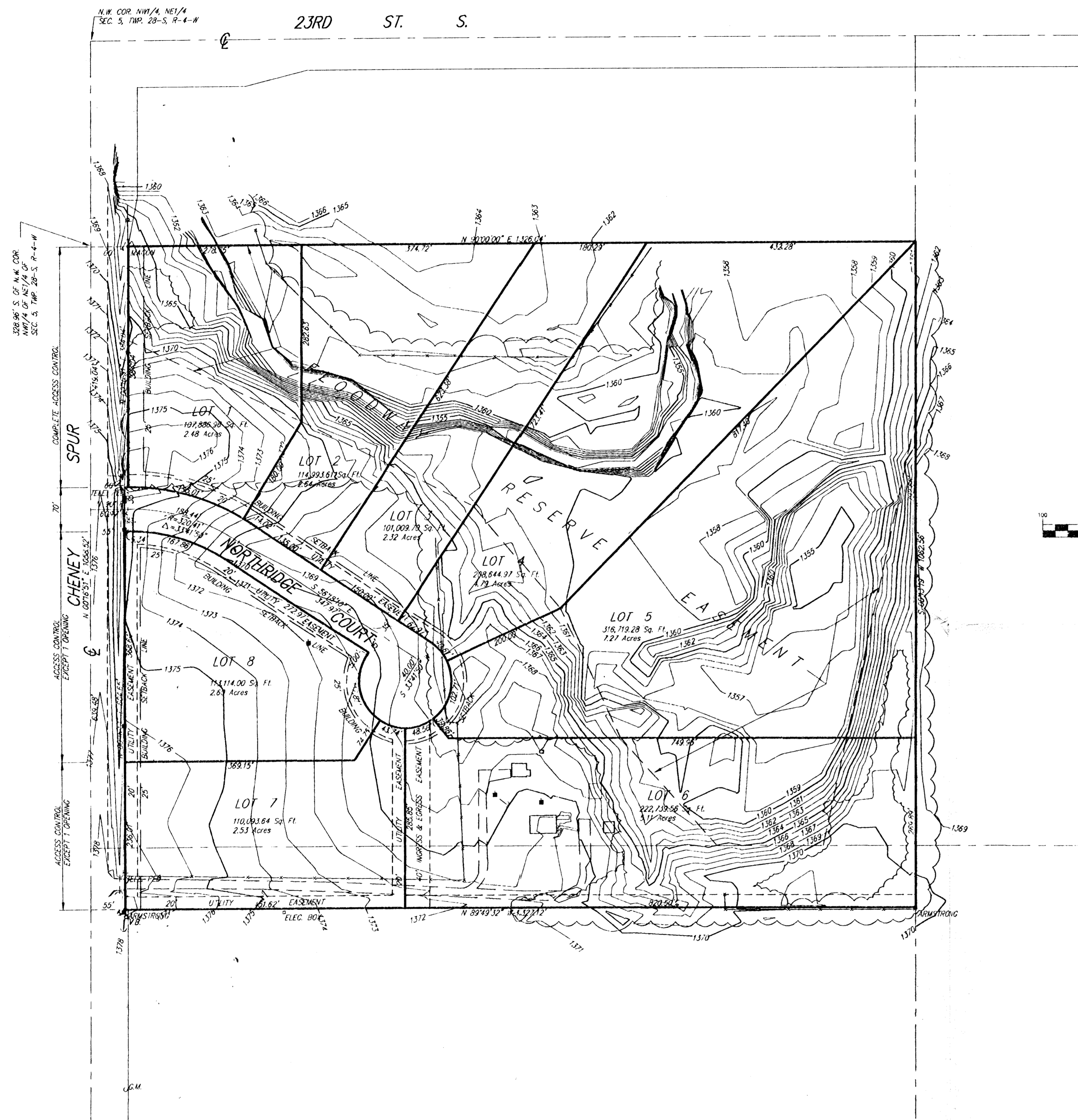


PRELIMINARY PLAT NORTHRIDGE ESTATES SEDGWICK COUNTY, KANSAS

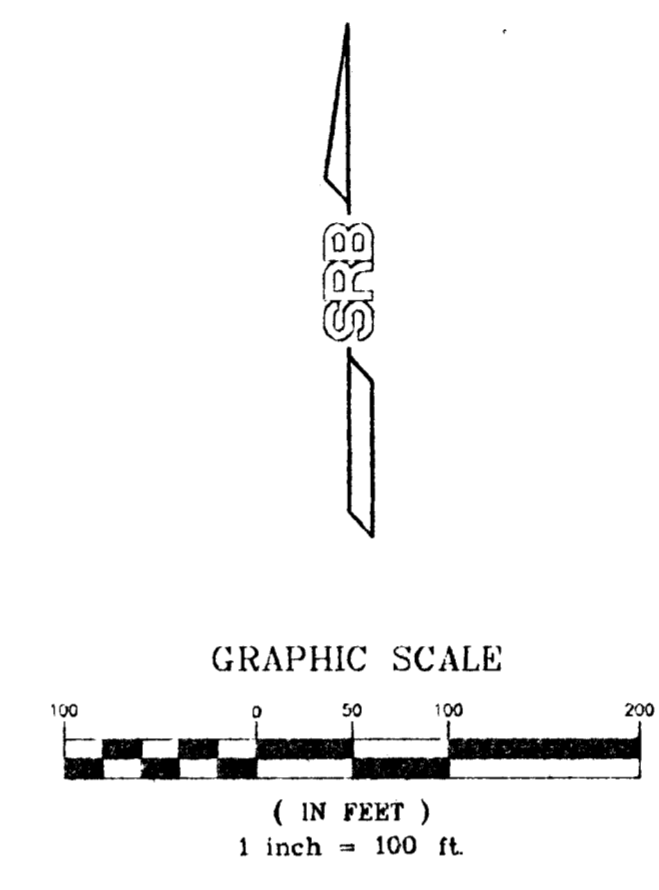


LEGAL DESCRIPTION:

The north 3 Acres of the SW1/4 of the NE1/4 of Sec. 5, Twp. 28-S, R-4-W of the 6th P.M., Sedgwick County, Kansas and the NW1/4 of the NE1/4 of Sec. 5, Twp. 28-S, R-4-W of the 6th P.M., Sedgwick County, Kansas; Except, the north 328.96 feet thereof.

STEVE SEILER
P.O. BOX 711
CHENEY, KANSAS 67205

PH. (316) 542-3262



GROSS SIZE:
1,406,884.63 Sq. Ft. ±
32.30 Acres ±

NET SIZE:
1,343,367.90 Sq. Ft. ±
30.84 Acres ±

BENCH MARK:
60d Nail in Telephone Pole
50' ± SW of N.W. Cor
Sec. 5-28S-4W
Elev.=1370.42