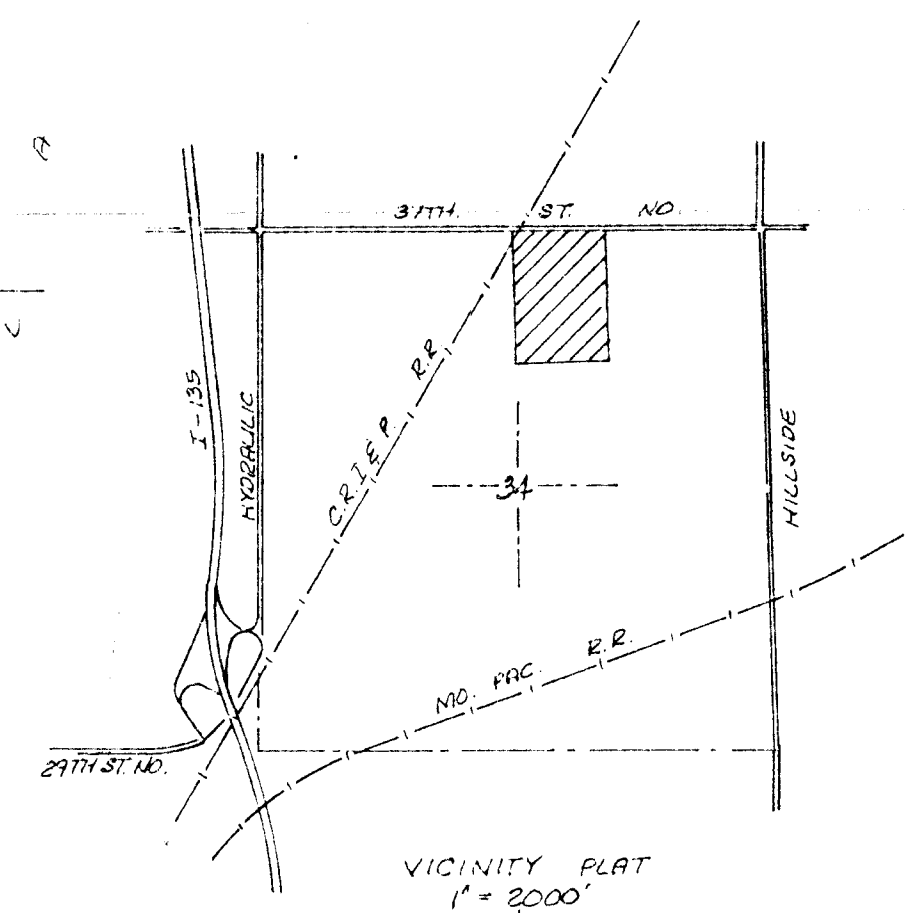

 1" = 100'
 ELEV. = M.S.L.
 BENCH MARK:
 Top of iron in thimble at N.W. Cor.
 of NE 1/4 Sec 34, Twp 26-S, R-1-E
 Elev. = 1351.65 Mean Sea Level



PRELIMINARY PLAT NO SANITARY
NORTHRIDGE INDUSTRIAL PARK

PART OF THE NE 1/4 OF SEC. 34, TWP. 26-S, R-1-E,
 OF THE 6TH P.M., SEDGWICK COUNTY, KANSAS.
 LEASING & RENTAL SERVICE, INC.
 LESS RUDD