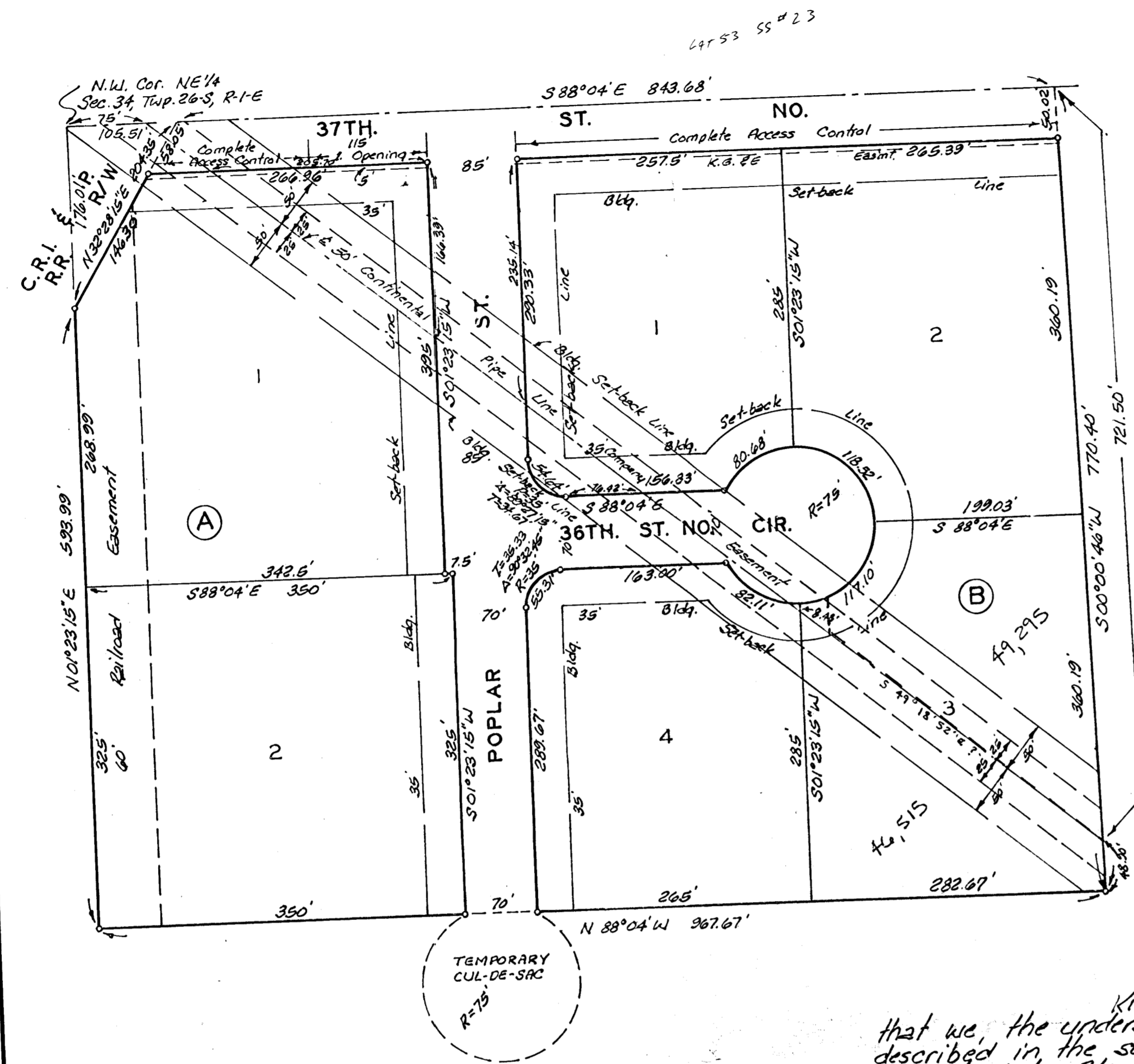


NORTHRIDGE INDUSTRIAL PARK

WICHITA, KANSAS.



This plat of "NORTHRIDGE INDUSTRIAL PARK" Wichita, Kansas, has been submitted to and approved by the Wichita-Sedgewick County Metropolitan Area Planning Commission, Wichita, Kansas. Dated this 14th day of July 1983.

Wichita-Sedgewick County Metropolitan Area Planning Commission.

David Bayouki Chairman
Robert A. Lakin Secretary

This plat approved and all dedications shown hereon accepted by the Board of Commissioners of the City of Wichita, Kansas, this day of _____ 1983.

 _____ Mayor
 _____ City Clerk

This plat approved and all dedications shown hereon accepted by the Board of Commissioners, Sedgewick County, Kansas, this day of _____ 1983.

 _____ Chairman
 _____ Commissioner
 _____ Commissioner
 _____ County Clerk

Entered on transfer record this day of _____ 1983.

 _____ County Clerk

state of Kansas 2 S.S. This is to certify that this Sedgewick County plat has been filed for record in the office of the Register of Deeds this _____ day of _____ 1983, at _____ o'clock _____ M; and is duly recorded.

 _____ Register of Deeds
 _____ Deputy

state of Kansas 2 S.S. We, Baughman Company, P.A., Surveyors in and for Sedgewick County and State do hereby certify that we have surveyed and plotted "NORTHRIDGE INDUSTRIAL PARK", Wichita, Kansas and that the accompanying plat is a true and correct exhibit of the property surveyed, described as commencing at the N.W. Corner of the NE 1/4 of Sec. 34, Twp. 26 S., R. 1 E. of the 6th P.M., Sedgewick County, Kansas; thence east along the north line of said NE 1/4, 105.91 feet to the easterly Right-of-way line of the Chicago Rock Island and Pacific Railroad for a place of beginning; thence continuing east along the north line of said NE 1/4, 843.68 feet to the N.W. Corner of the East 50 Acres of the NE 1/4 of said NE 1/4; thence south along the west line of said East 50 Acres, 770.40 feet; thence west parallel with the north line of said NE 1/4, 967.67 feet to the west line of said NE 1/4; thence north along the west line of said NE 1/4, 393.99 feet to the easterly Right-of-way line of said Railroad, said point being 176.01 feet south of the N.W. Corner of said NE 1/4; thence northeasterly along said Railroad Right-of-way, 204.35 feet to the place of beginning.

Baughman Company, P.A.

William L. Korber Surveyor
 William L. Korber
 10/5/83 Date

I, the undersigned, know all men by these presents that we, the undersigned, have caused the land described in the surveyors certificate to be platted into Lots, Blocks and streets to be known as "NORTHRIDGE INDUSTRIAL PARK", Wichita, Kansas. The streets are hereby dedicated to and for the use of the public. All abutters rights of access to or from 37th St. No. over and across the north line of Lot 1, Block A and Lots 1 and 2, Block B, are hereby granted to the City of Wichita, provided however that Lot 1, Block A, shall have access to 37th St. No. at 1 point over the east 115 feet of the north line as shall be determined by the City Engineer of the City of Wichita, Kansas. The K.A.E. easement is hereby granted as indicated. The railroad easement is hereby granted for railroad spur purposes.

Leslie Ridd President
 Leasing & Rental Service, Inc.

state of Kansas 2 S.S. The foregoing instrument was acknowledged before me this 4th day of October 1983 by Leslie Ridd, President of Leasing & Rental Service, Inc. on behalf of the corporation

Mark A. Savoy Notary Public
 My App't. Exp. 12 May 84