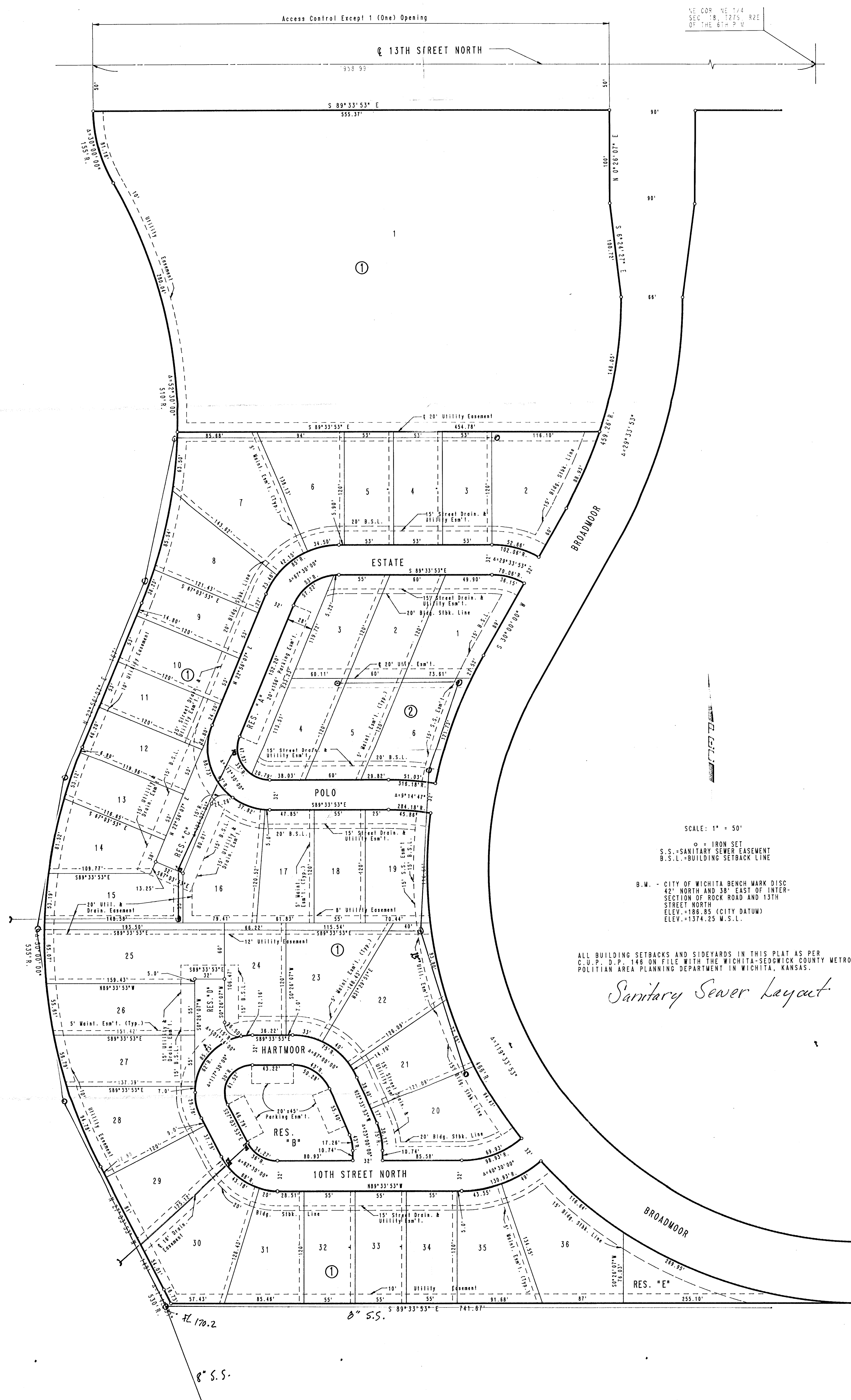


FAIRFIELD CLUB ADDITION TO WICHITA, SEDGWICK COUNTY, KANSAS



NE COR. NE 1/4
SEC. 18, T21S, R2E
OF THE 6TH P.M.

SCALE: 1" = 50'

○ = IRON SET
S.S. = SANITARY SEWER EASEMENT
B.S.L. = BUILDING SETBACK LINE

B.M. - CITY OF WICHITA BENCH MARK DISC
42' NORTH AND 38' EAST OF INTER-
SECTION OF ROCK ROAD AND 13TH
STREET NORTH
ELEV. +186.85 (CITY DATUM)
ELEV. +1374.25 M.S.L.

ALL BUILDING SETBACKS AND SIDEYARDS IN THIS PLAT AS PER
C.U.P.D.P. 146 ON FILE WITH THE WICHITA-SEDGWICK COUNTY METRO-
POLITAN AREA PLANNING DEPARTMENT IN WICHITA, KANSAS.

Sanitary Sewer Layout