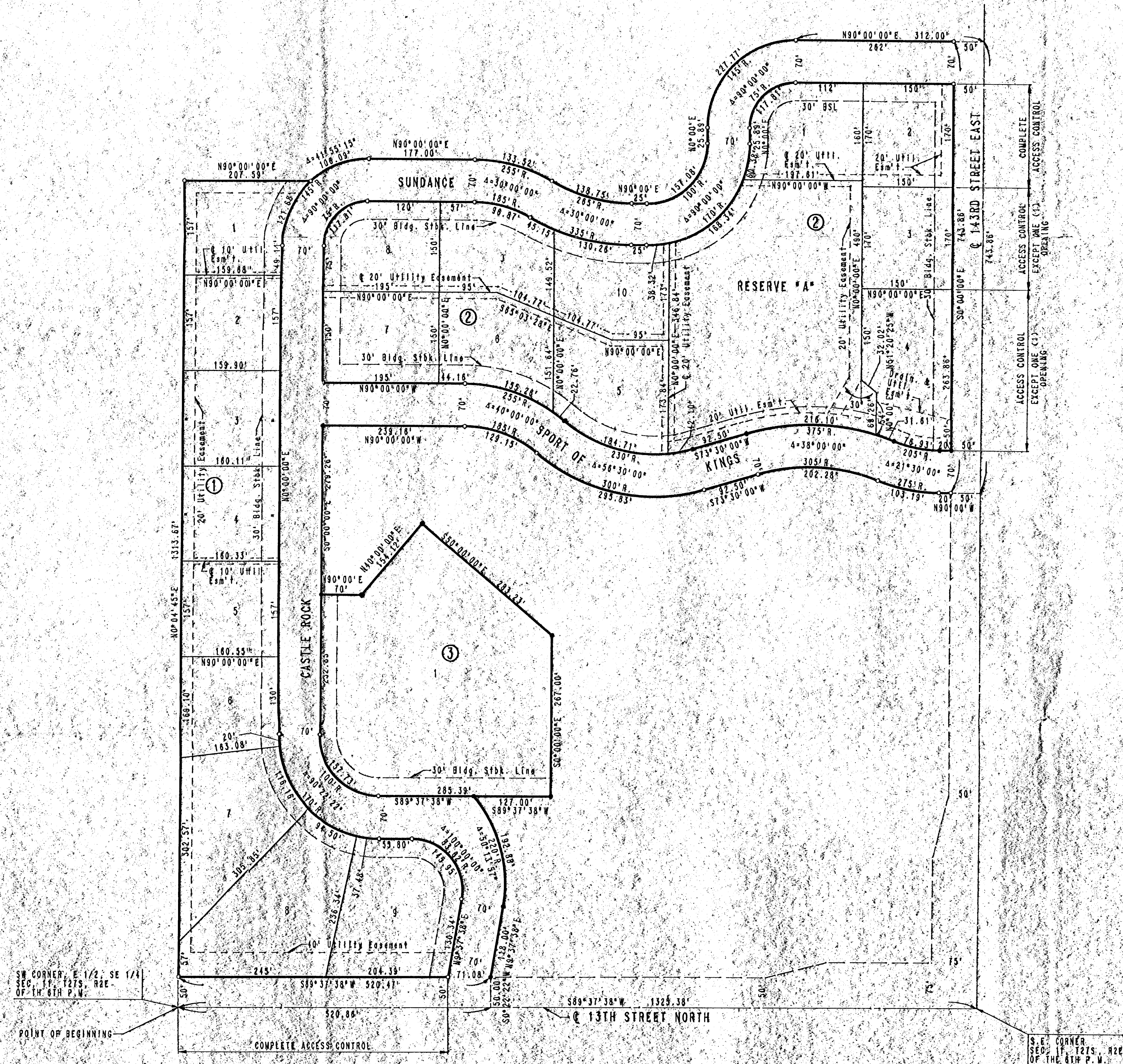


SAVANNA AT CASTLE ROCK RANCH 4TH ADDITION TO SEDGWICK COUNTY, KANSAS



SCALE: 1"=100'
 ○ 3/4" IRON SET
 ● IRON FOUND

B.M. - R.R. SPIKE IN H.L.P. 43' S.E. OF
 S.W. CORNER SEC. 12, T27S, R2E.
 ELEV. = 1332.87 W.S.L.
 ELEV. = 183.47 CITY DATUM

MINIMUM PAD ELEVATION (LOWEST OPENING)
 FOR LOTS 1 THROUGH 5 AND LOT 10 IN
 BLOCK 2 SHALL BE ELEV. 1349.0' W.S.L.

