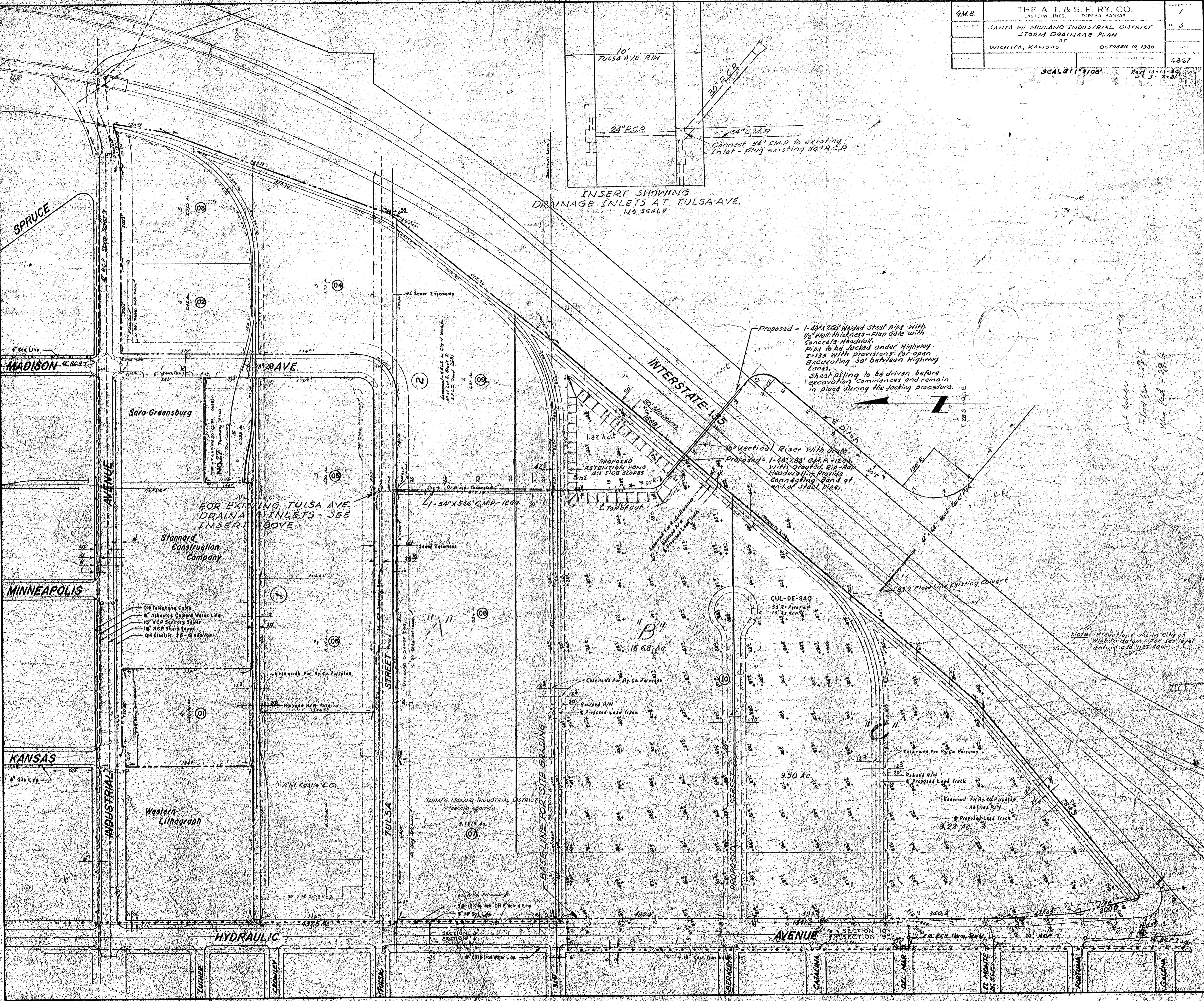


INSERT SHOWING  
DRAINAGE INLETS AT TULSA AVE.  
NO. 5046 #

Proposed - 1-48" x 200' Welded steel pipe with 1/2" wall thickness - flap gate with concrete headwall. Pipe to be jacked under Highway 2-135 with provisions for open excavating 30' between Highway lanes. Sheet piling to be driven before excavation commences and remain in place during the jacking procedure.



MADISON

MINNEAPOLIS

KANSAS

HYDRAULIC

Sara Greensburg

Stannard Construction Company

Western Lithograph

A.M. Gable & Co.

SANTA FE MIDLAND INDUSTRIAL DISTRICT  
Second Addition

BASELINE FOR SITE GRADING

INTERSTATE-135

CUL-DE-SAC

9.50 Ac.

AVENUE

- Old Telephone Cable
- 8" Asbestos Cement Water Line
- 10" VCP Sanitary Sewer
- 18" RCP Storm Sewer
- Old Electric 33-4 kVolt

NOTE: Elevations shown City of Wichita datum - For sea level datum add 1123.40'

Art. 10-11-30  
Flood Elev. = 97.6  
Main Pad = 28.6