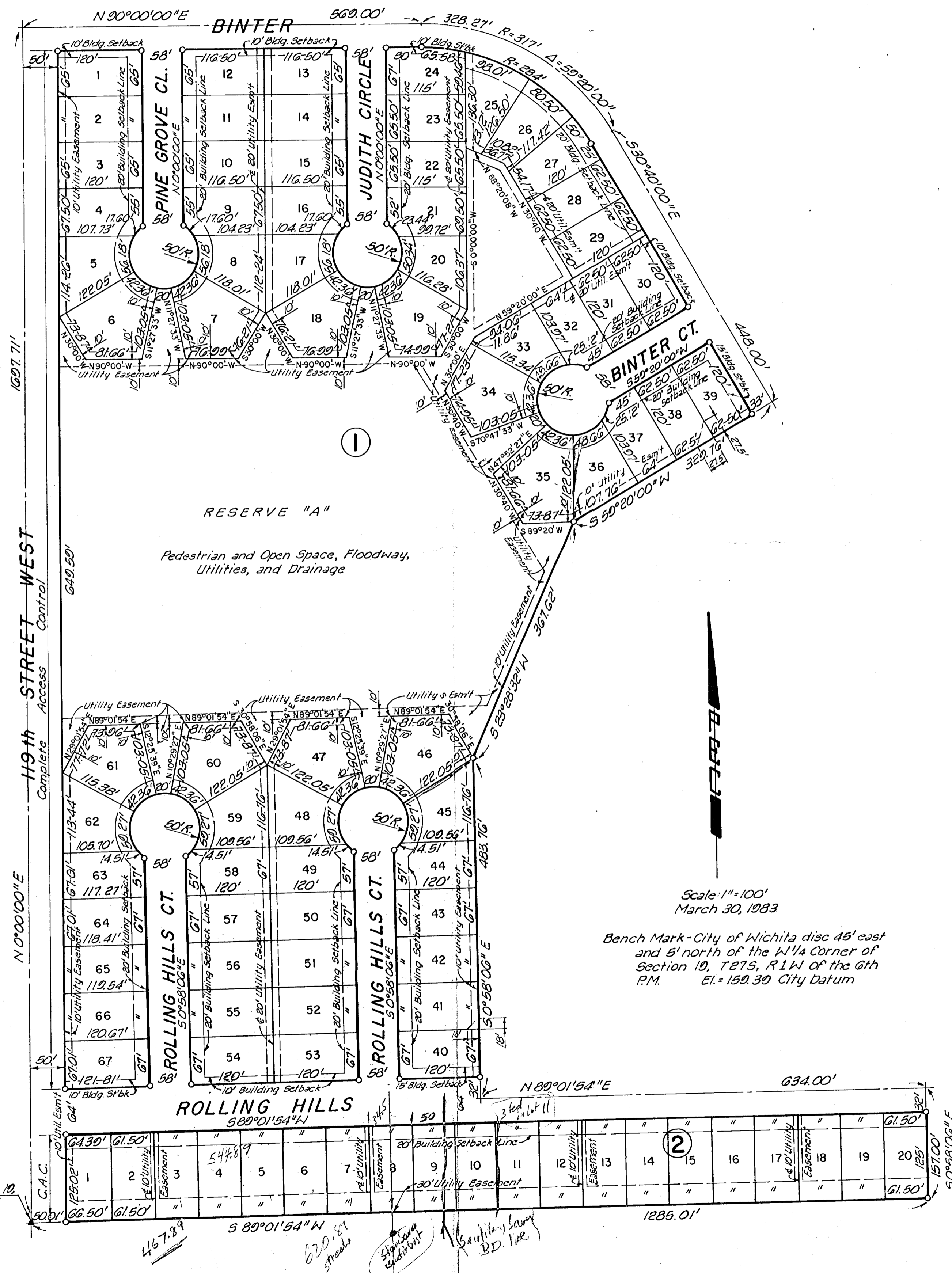


# SANDALWOOD VILLAGE

TO WICHITA, SEDGWICK COUNTY, KANSAS



State of Kansas  
County of Sedgwick

I, R.W. Linn, a Professional Engineer in aforesaid State and County, do hereby certify that on this \_\_\_\_\_ day of \_\_\_\_\_, 1983, I have caused to be surveyed and platted "SANDALWOOD VILLAGE," to Wichita, Sedgwick County, Kansas, into lots, blocks, streets, and a reserve, being a replat of Lots 1 through 32 inclusive and Lots 45 through 67 inclusive, together with Reserve "A", all in Block 14, Lots 1 through 16 inclusive in Block 24, and those streets as shown on the accompanying plat, all in Westlink Nineteenth Addition, Wichita, Sedgwick County, Kansas, and more particularly described as: Beginning at the SW Corner of the NW 1/4 of Section 10, Township 27 South, Range 1 West of the 6th P.M.; thence bearing N 0°00'00"E along the west line of said NW 1/4 a distance of 1697.71 feet to a point on the centerline of Binter as platted in said Westlink Nineteenth Addition; thence bearing N 90°00'00"E along said centerline a distance of 569.00 feet to the P.C. of a curve to the right; thence along said curve (and still along said centerline) having a radius of 317.00 feet through a central angle of 50°20'00" having an arc distance of 328.27 feet; thence bearing 530°40'00"E continuing along said centerline a distance of 448.00 feet; thence bearing 559°20'00"W along the rear line and the rear line extended of Lots 33, 34, 35, and part of 36 in said Block 14 a distance of 329.76 feet; thence bearing 523°28'32"W along the rear line of Lots 36, 37, 38, and part of 39, all in said Block 14 a distance of 367.62 feet; thence bearing 50°58'06"E along the rear line and the rear line extended of Lots 39, 40, 41, 42, 43, and 44 in said Block 14 a distance of 483.76 feet to a point on the centerline of Rolling Hills as platted in said Westlink Nineteenth Addition; thence bearing N 80°01'54"E along said centerline a distance of 634.00 feet; thence bearing 50°58'06"E along the west line and the west line extended of Lot 17, said Block 24, to a point on the south line of said NW 1/4; thence bearing 589°01'54"W along said south line a distance of 1285.01 feet to the point of beginning.

R.W. Linn, P.E.  
No. 3684

Know all men by these presents that we, the undersigned property owners of the land as above set forth in the Engineer's Certificate, have caused the land to be surveyed and platted into lots, blocks, streets, and a reserve, the same to be known as "SANDALWOOD VILLAGE," to Wichita, Sedgwick County, Kansas. Easements, as indicated for the construction and maintenance of public utilities, are hereby granted. The reserve will be owned and maintained by the Sandalwood Village Homeowners' Association and be reserved for pedestrian and open space, floodway, utilities, and drainage. The floodway shall be the responsibility of said Homeowners' Association until such time as the governing body exercising jurisdiction elects to assume responsibility for maintenance and improvement of the floodway, provided further that no building(s) shall be constructed on or within said floodway, nor shall any fill, change of grade, creation of channel, or other work be carried on without the permission of the appropriate governing body. All abutters' rights of access to and from 119th St. West over and across the west line of Blocks 1 and 2 are hereby granted to the City of Wichita. All portions of Westlink Nineteenth Add. within the above described tract are hereby vacated by virtue of K.S.A. 12-512(b). Min. Pad Elev.

Thurman W. Smith      Judith A. Smith

State of Kansas  
County of Sedgwick

Be it remembered that on this \_\_\_\_\_ day of \_\_\_\_\_, 1983, before me, a Notary Public in aforesaid State and County, came Thurman W. Smith and Judith A. Smith, husband and wife, to me personally known to be the same persons who executed the foregoing instrument of writing and duly acknowledge the execution of same for and on behalf and as the voluntary act and deed of said persons, in testimony whereof I have hereunto set my hand and affixed my Notarial Seal the day and year above written.

\_\_\_\_\_  
Notary Public

My Appointment Expires: \_\_\_\_\_

Know all men by these presents that we, the First National Bank in Wichita, Kansas, mortgagee on the land as above set forth in the Engineer's Certificate, do hereby consent to the platting of "SANDALWOOD VILLAGE," to Wichita, Sedgwick County, Kansas.

State of Kansas  
County of Sedgwick

Be it remembered that on this \_\_\_\_\_ day of \_\_\_\_\_, 1983, before me, a Notary Public in aforesaid State and County, came the First National Bank in Wichita, Kansas, by \_\_\_\_\_, its \_\_\_\_\_, to me personally known to be the same person who executed the foregoing instrument of writing and duly acknowledge the execution of same for and on behalf and as the voluntary act and deed of said Bank, in testimony whereof I have hereunto set my hand and affixed my Notarial Seal the day and year above written.

\_\_\_\_\_  
Notary Public

My Appointment Expires: \_\_\_\_\_

This plat has been submitted to and approved by the Wichita-Sedgwick County Planning Commission, Wichita, Kansas.  
Dated this \_\_\_\_\_ day of \_\_\_\_\_, 1983.

\_\_\_\_\_  
Chairman  
David Bayouth  
\_\_\_\_\_  
Secretary  
Robert A. Lakin

This plat approved and all dedications shown hereon are accepted by the City Commission of the City of Wichita, Kansas.  
Dated this \_\_\_\_\_ day of \_\_\_\_\_, 1983.

\_\_\_\_\_  
Mayor  
Margalee Wright  
\_\_\_\_\_  
City Clerk  
Donald C. Gisick

This is to certify that this instrument was filed for record in the Register of Deeds Office at \_\_\_\_\_ m. on this \_\_\_\_\_ day of \_\_\_\_\_, 1983.

\_\_\_\_\_  
Register of Deeds  
Bette F. McCart  
\_\_\_\_\_  
Deputy  
Pat Kettler

This plat approved and all dedications shown hereon are accepted by the Board of County Commissioners of Sedgwick County, Kansas.  
Dated this \_\_\_\_\_ day of \_\_\_\_\_, 1983.

\_\_\_\_\_  
Chairman  
Jack Spratt  
\_\_\_\_\_  
Commissioner  
Donald E. Gragg  
\_\_\_\_\_  
Commissioner  
Tom Scott

Attest:  
\_\_\_\_\_  
County Clerk  
Dorothy K. White

Entered on Transfer Record this \_\_\_\_\_ day of \_\_\_\_\_, 1983.

\_\_\_\_\_  
County Clerk  
Dorothy K. White