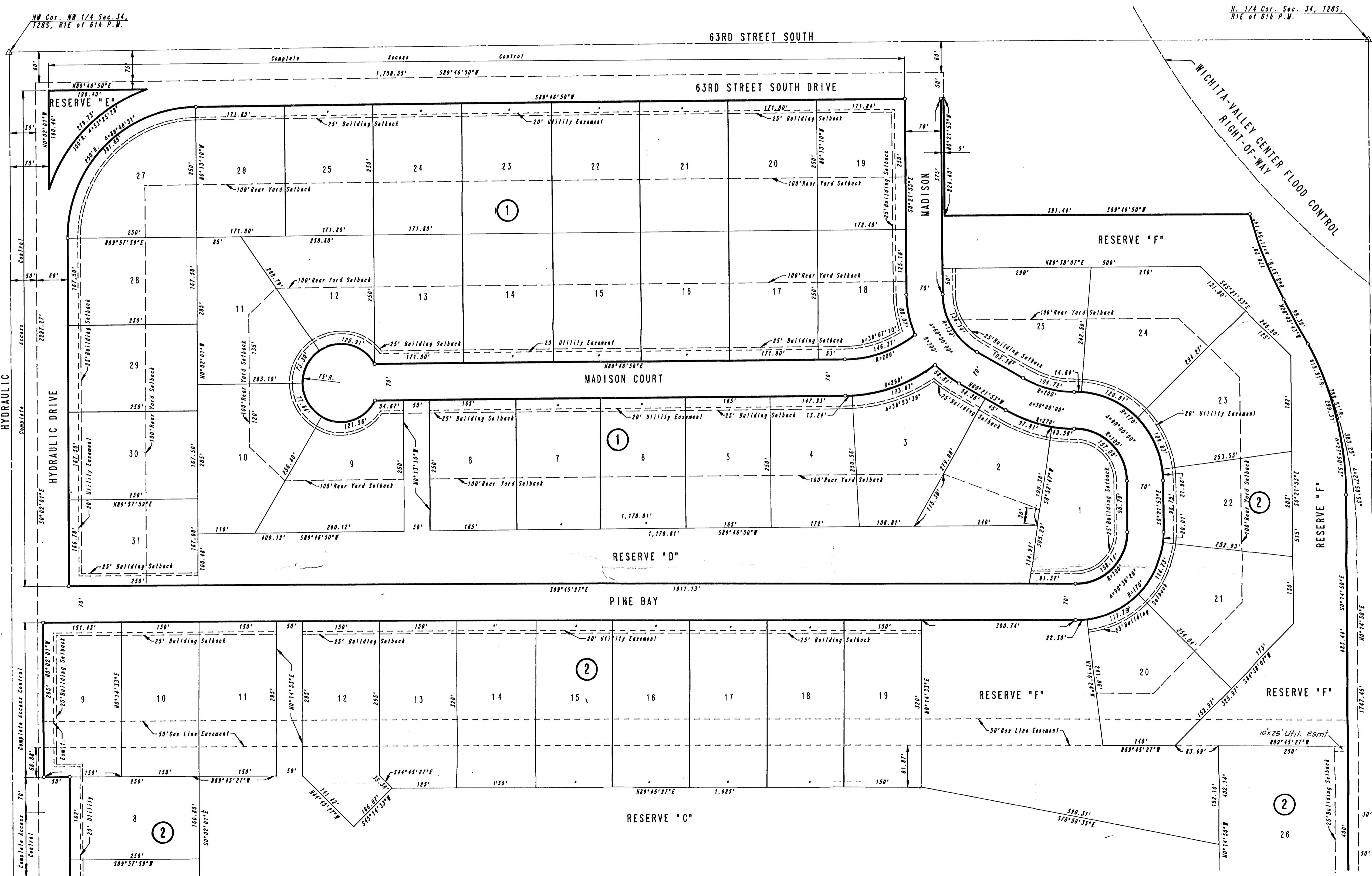


PINE BAY ESTATES

SEDGWICK COUNTY, KANSAS



N. 1/4 Cor. Sec. 34, T20S,
R1E of 6th P.M.

SCALE: 1"=100'
 ○ = IRONS SET
 BENCH MARK: CITY OF WICHITA DISC
 59' E. & 44.5' S. OF E. 63RD STREET
 SOUTH & HYDRAULIC
 ELEV. = 1261.00 MEAN SEA LEVEL

STATE OF KANSAS)
)
 COUNTY OF SEDGWICK)
 I, R. W. LINN, A PROFESSIONAL ENGINEER IN AFORESAID STATE AND COUNTY, DO
 HEREBY CERTIFY THAT ON THIS _____ DAY OF _____, 1985, I
 HAVE CAUSED TO BE SURVEYED AND PLATTED, PINE BAY ESTATES, SEDGWICK
 COUNTY, KANSAS, INTO LOTS, BLOCKS, STREETS AND RESERVES THE SAME BEING
 DESCRIBED AS FOLLOWS:

BEGINNING AT A POINT IN THE SOUTH LINE AND 30.00 FEET WEST OF
 THE S.E. CORNER OF THE NW 1/4 OF SECTION 34, TOWNSHIP 28 SOUTH,
 RANGE 1 EAST OF THE 6TH P.M., THENCE BEARING N0°14'50"W
 PARALLEL TO AND 30.00 FEET WEST OF THE EAST LINE OF SAID NW 1/4
 A DISTANCE OF 1747.49 FEET TO THE P.C. OF A CURVE TO THE LEFT,
 THENCE ALONG SAID CURVE HAVING A RADIUS OF 788.51 FEET AND
 THROUGH A CENTRAL ANGLE OF 27°50'53" AN ARC DISTANCE OF 383.25
 FEET; THENCE BEARING N28°05'43"W A DISTANCE OF 99.39 FEET TO
 THE P.C. OF A CURVE TO THE RIGHT; THENCE ALONG SAID CURVE HAVING
 A RADIUS OF 848.51 FEET AND A CHORD OF 175.97 FEET BEARING
 N22°08'36"W THROUGH A CENTRAL ANGLE OF 11°54'14" AN ARC
 DISTANCE OF 176.29 FEET; THENCE BEARING S89°46'50"W PARALLEL
 TO THE NORTH LINE OF SAID NW 1/4, A DISTANCE OF 591.44 FEET;
 THENCE BEARING N0°21'53"W A DISTANCE OF 274.40 FEET; THENCE
 BEARING S89°46'50"W PARALLEL TO AND 60.00 FEET SOUTH OF THE
 NORTH LINE OF SAID SECTION 34, A DISTANCE OF 1758.35 FEET; THENCE
 BEARING S0°02'01"E PARALLEL TO AND 50.00 FEET EAST OF THE WEST
 LINE OF SAID SECTION 34, A DISTANCE OF 2297.27 FEET TO THE P.C.
 OF A CURVE TO THE LEFT, THENCE ALONG SAID CURVE HAVING A RADIUS
 OF 587.28 FEET, THROUGH A CENTRAL ANGLE OF 36°28'07" AN ARC
 DISTANCE OF 373.80 FEET TO A POINT IN THE SOUTH LINE OF THE NW
 1/4 OF SAID SECTION 34, THENCE BEARING N89°39'14"E A DISTANCE
 OF 2448.58 FEET TO THE POINT OF BEGINNING.

R. W. LINN, P.E. NO. 3684

KNOW ALL MEN BY THESE PRESENTS THAT WE, THE UNDERSIGNED PROPERTY OWNERS
 OF THE LAND, AS ABOVE SET FORTH IN THE ENGINEER'S CERTIFICATE, HAVE
 CAUSED THE LAND TO BE SURVEYED AND PLATTED INTO LOTS, BLOCKS, STREETS,
 AND RESERVES, THE SAME TO BE KNOWN AS PINE BAY ESTATES, SEDGWICK
 COUNTY, KANSAS. EASEMENTS, AS INDICATED FOR THE CONSTRUCTION AND
 MAINTENANCE OF PUBLIC UTILITIES, FOR PIPELINE, AND FOR DRAINAGE, ARE
 HEREBY GRANTED. STREETS ARE HEREBY DEDICATED TO AND FOR THE USE OF THE
 PUBLIC. RESERVES "A", "B", "C", "D", "E", "F", "G" SHALL BE OWNED AND MAINTAINED
 BY THE OWNERS OF THE LAND, GERALD E. BLOOD AND JO LYNN BLOOD, HUSBAND
 AND WIFE, AND SHALL BE RESERVED FOR DRAINAGE, UTILITIES, LANDSCAPING,
 OPEN SPACE, PRIVATE ACCESS, PIPELINE, AND RECREATIONAL FACILITIES.
 RESERVES "C" AND "E" SHALL BE OWNED AND MAINTAINED BY THE "PINE BAY
 ESTATES" HOMEOWNER'S ASSOCIATION; RESERVE "D" SHALL BE RESERVED FOR
 DRAINAGE UTILITIES, PIPELINE, LANDSCAPING, PRIVATE ACCESS, AND
 RECREATIONAL FACILITIES. RESERVE "F" SHALL BE RESERVED FOR LANDSCAPING
 AND ADVERTISEMENT, ALL IN ACCORDANCE WITH THE RESTRICTIVE COVENANTS
 ESTABLISHED BY SAID HOMEOWNER'S ASSOCIATION. ALL ABUTTER'S RIGHTS OF
 ACCESS TO AND FROM 63RD STREET SOUTH AND HYDRAULIC AVENUE ARE HEREBY
 GRANTED TO THE APPROPRIATE GOVERNING BODY. MIN PAD ELEVATION REQUIRED
 FOR LOTS 1 THROUGH 20 AND LOTS 27, 28, 29 AND 30, ALL IN BLOCK 2,
 ELEVATION = 1250.00 W.S.L.

OWNERS:
 JO LYNN BLOOD
 GERALD E. BLOOD