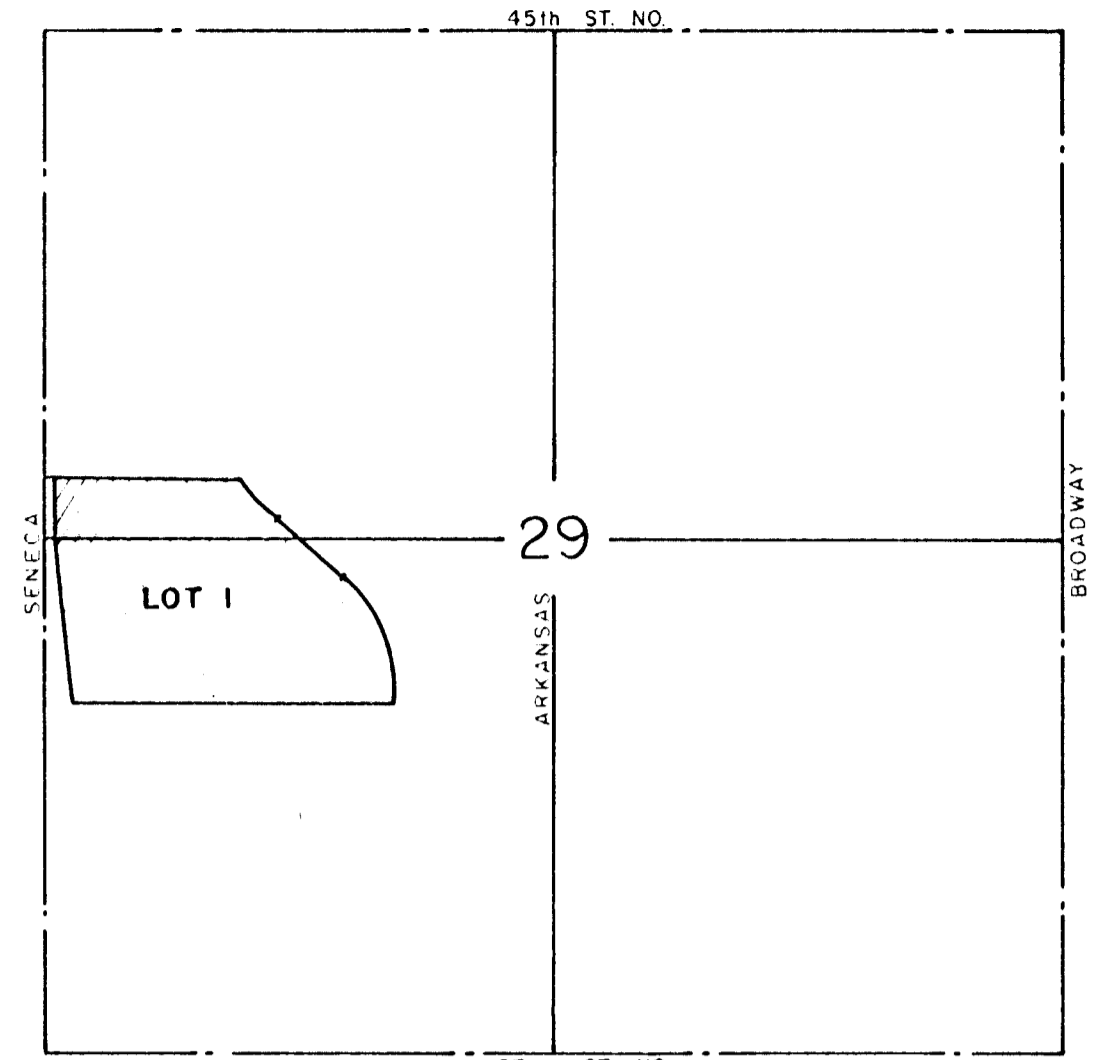


"UNPLATTED"



NW cor. SW 1/4
Sec. 29-26-1E

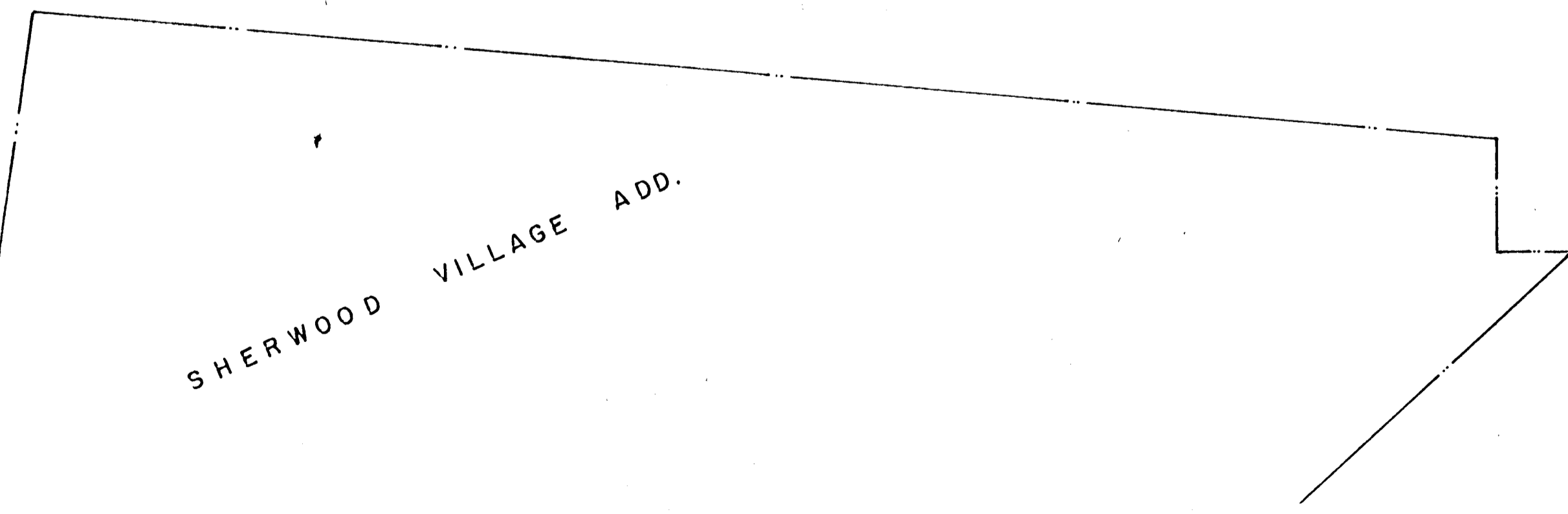
NE cor. NW 1/4 SW 1/4
Sec. 29-26-1E



VICINITY MAP
1" = 1000'

PRELIMINARY PLAT
SHARK'S NEST,
WICHITA, SEDGWICK COUNTY, KANSAS.

FOR: EDGAR DWIRE
305 W. CENTRAL
WICHITA, KS 67203



B.M. - ELEV. 144.74 - CITY OF WICHITA DATUM,
STD. DISC ON TOP OF CONC.
WING ON SE CORNER OF
BRIDGE OVER BIG DITCH
AT 37TH ST. NO.

TOPO MADE AUGUST, 1988.

LOWELL D. HIGH, L.S.