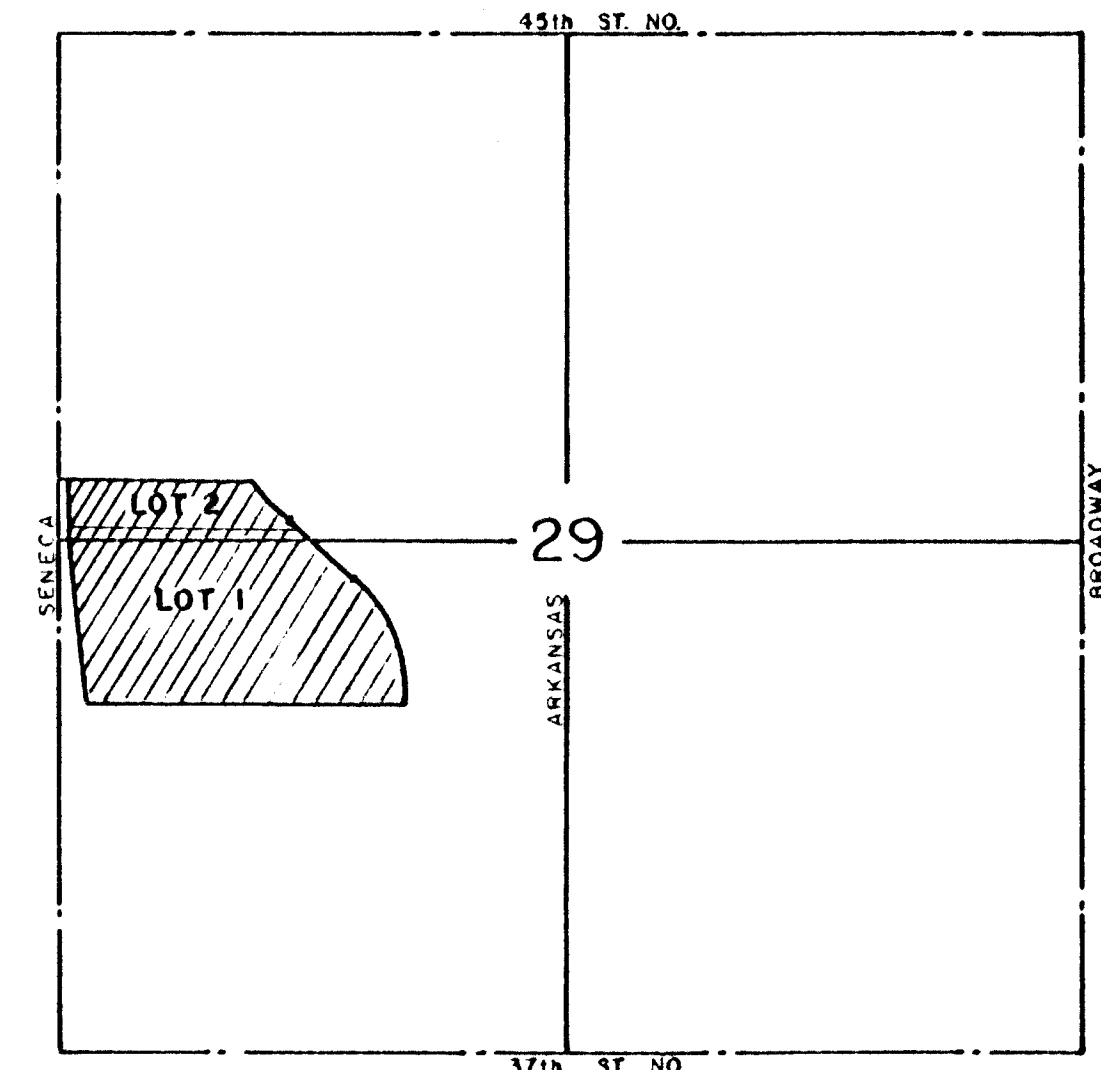
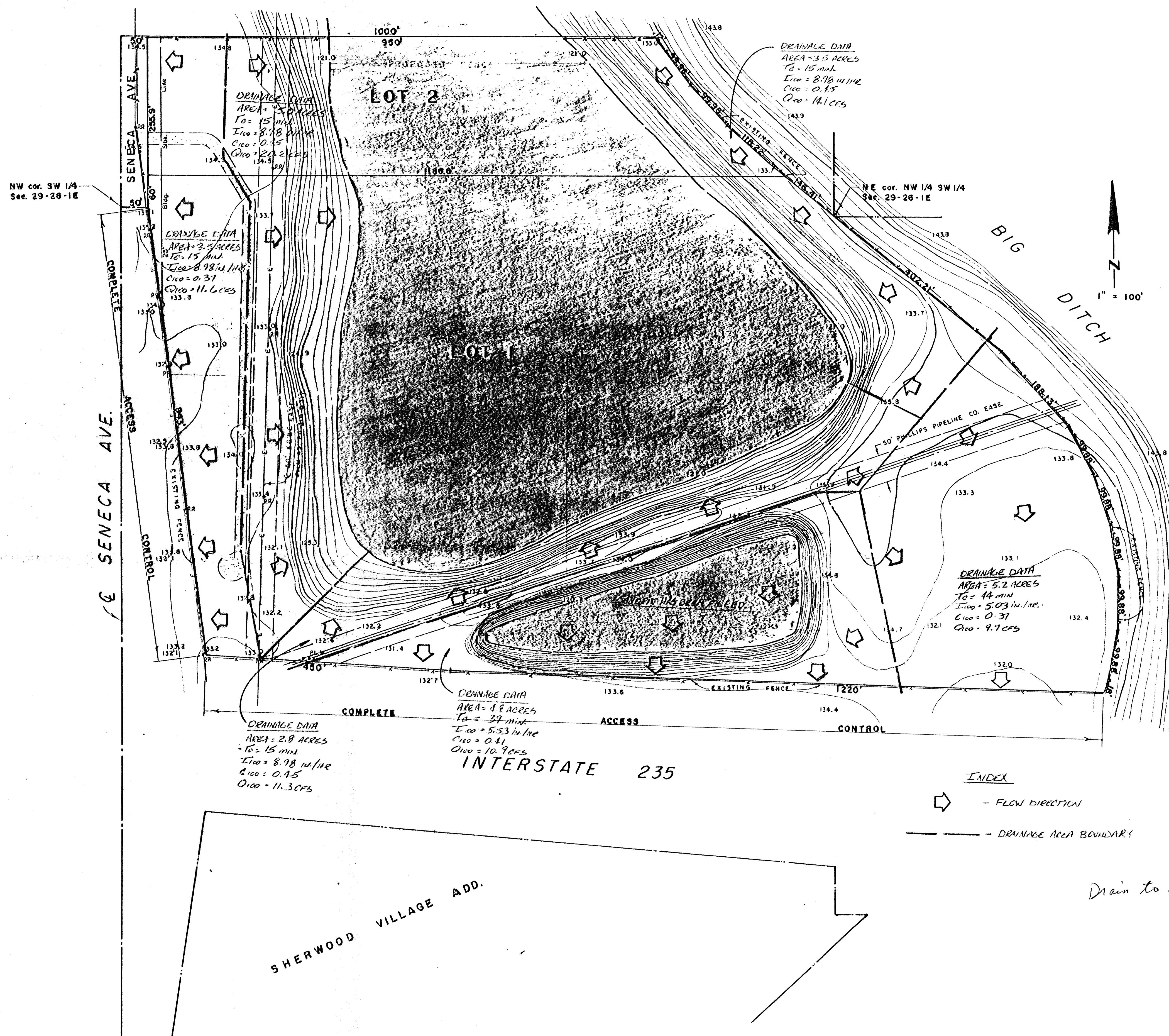


"UNPLATTED"



DRAINAGE PLAN
SHARK'S NEST,
WICHITA, SEDGWICK COUNTY, KANSAS.



MINIMUM PAD ELEVATION
 1328.0 MSL
 138.8 CITY DATUM

FOR: EDGAR DWIRE
 305 W. CENTRAL
 WICHITA, KS 67203

INDEX
 ◁ - FLOW DIRECTION
 --- - DRAINAGE AREA BOUNDARY

Drain to I-235 R/W

DRAINAGE PLAN BY:

SHARK'S NEST DRAINAGE PLAN		CERTIFIED ENGINEERING DESIGN	
CED	335 NORTH OHIO	SHEET	1
	WICHITA, KANSAS 67216	TOTAL	1
(310) 332-3208			

B.M. - ELEV. 144.74 - CITY OF WICHITA DATUM,
 STD. DISC ON TOP OF CONC.
 WING ON SE CORNER OF
 BRIDGE OVER BIG DITCH
 AT 37TH ST. NO.

TOPO MADE AUGUST, 1988.

JIM E. BISHOP, L.S.