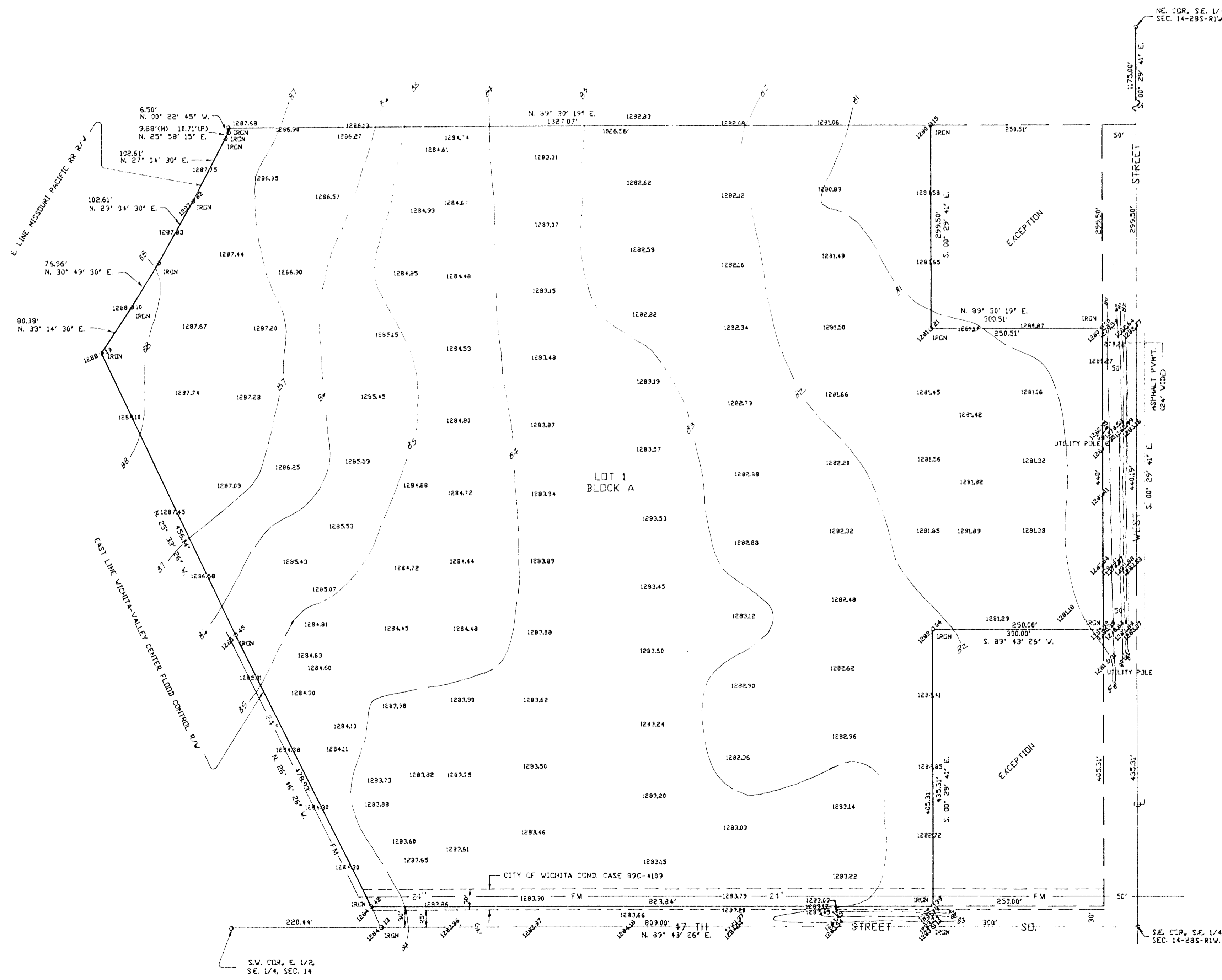
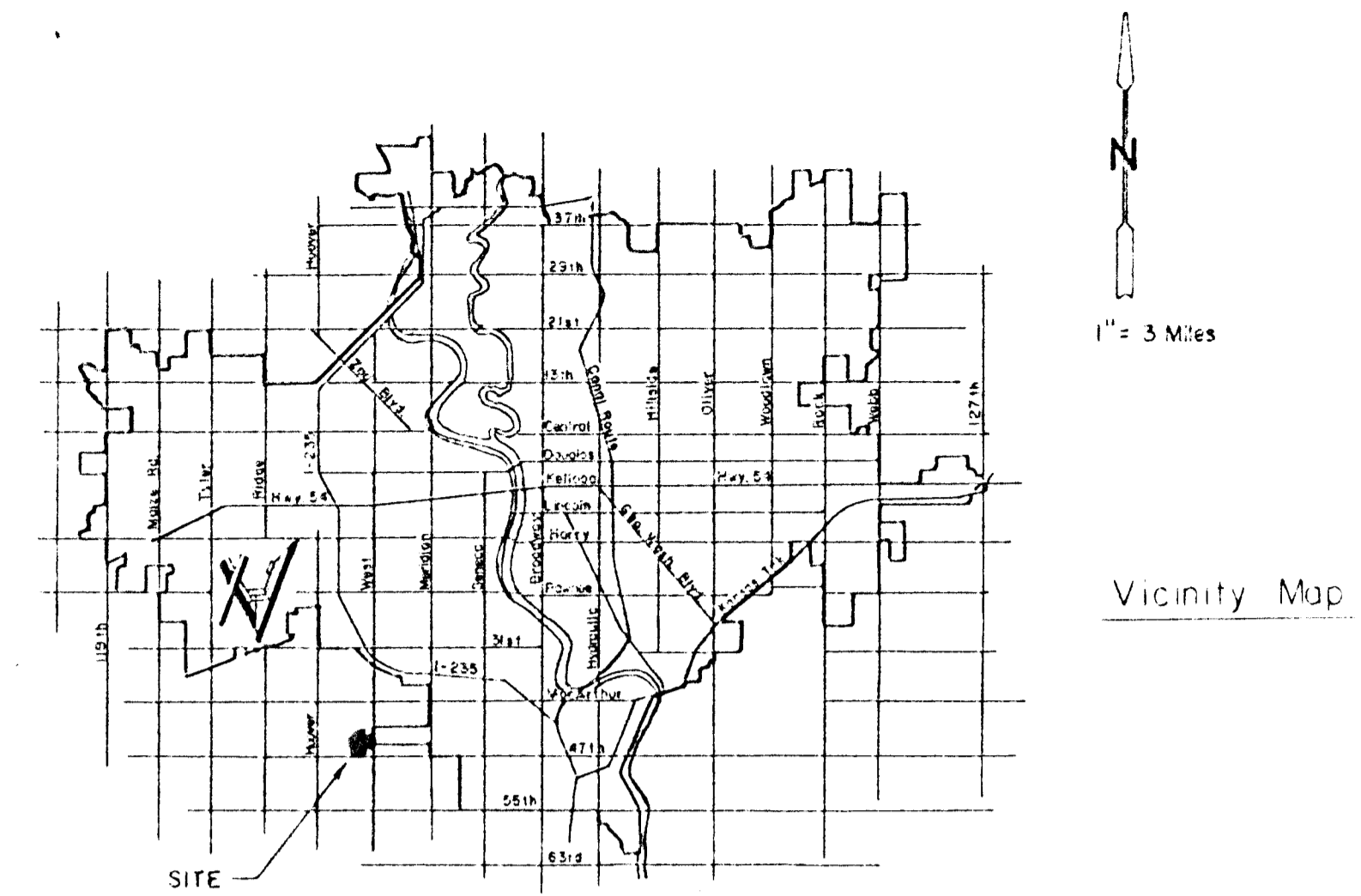


PRELIMINARY PLAT
of
WEST YARD ADDITION
SEDGWICK COUNTY, KANSAS



Legal Description

Beginning at a point in the South line and 300.00' West of the Southeast Corner of the Southeast Quarter of Section 14, Twp. 28 S., Rg. 1 West of the 6th P.M., Sedgwick County, Kansas; thence West along the South line of said Southeast Quarter, and with an assumed bearing of S. 89° 43' 26" W., a distance of 809.00' to a point in the Easterly line of the Wichita-Valley Center Flood Control Right-of-Way; thence N. 26° 45' 26" W., along said Flood Control Right-of-Way, a distance of 478.93'; thence N. 25° 33' 28" W., along said Flood Control R/W, a distance of 456.14' to a point in the Easterly line of the Missouri Pacific R.R. Right-of-Way; thence along said railroad R/W, the following bearings and distances: N. 33° 14' 30" E., 80.38'; N. 30° 19' 30" E., 76.96'; N. 29° 04' 30" E., 102.61'; N. 27° 04' 30" E., 102.61'; N. 25° 58' 15" E., 9.88' to a point in the West line of the East 1/2 of the Southeast Quarter of said Section 14; thence N. 00° 22' 45" W., along said West line, a distance of 6.50'; thence N. 89° 30' 19" E., a distance of 1,026.58'; thence S. 00° 29' 41" E., parallel with the East line of said Section, a distance of 299.50'; thence N. 39° 30' 19" E., a distance of 300.51' to a point in the East line of said Section, a distance of 440.19', to a point 435.31' North of the Southeast Corner of said Section 14; thence S. 89° 43' 26" W., distance of 300.00'; thence S. 00° 29' 41" E., a distance of 435.31' to the point of beginning; EXCEPT therefrom, the East 50.00' and also the South 30.00', of the above described tract.

BENCHMARK

SQUARE CUT ON CENTER OF EAST HUBGUARD RCBC UNDER WEST STREET, APPROX. 760' SOUTH OF THE N.E. CORNER OF THE S.E. 1/4, OF SEC. 14, T.28 SOUTH, R.1 WEST ELEV. = 1281.58 M.S.L.

MDEHRING & ASSOCIATES
CONSULTING ENGINEERS
WICHITA
August 22, 1992

