

DRAINAGE CONCEPT

**WESTSIDE ASSEMBLY
 CHAPEL ADDITION**

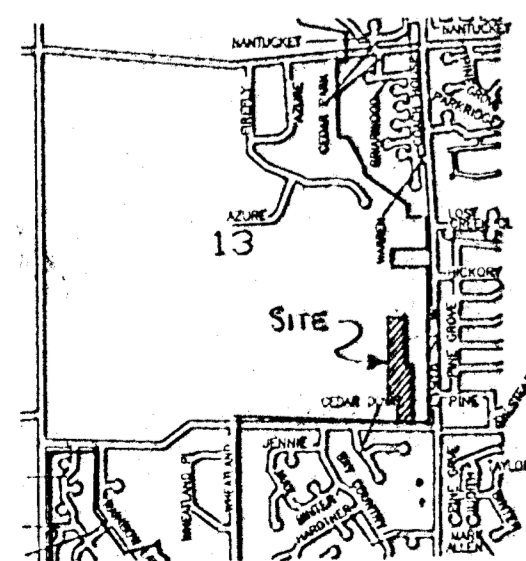
SEDGWICK COUNTY, KANSAS

LEGAL DESCRIPTION:

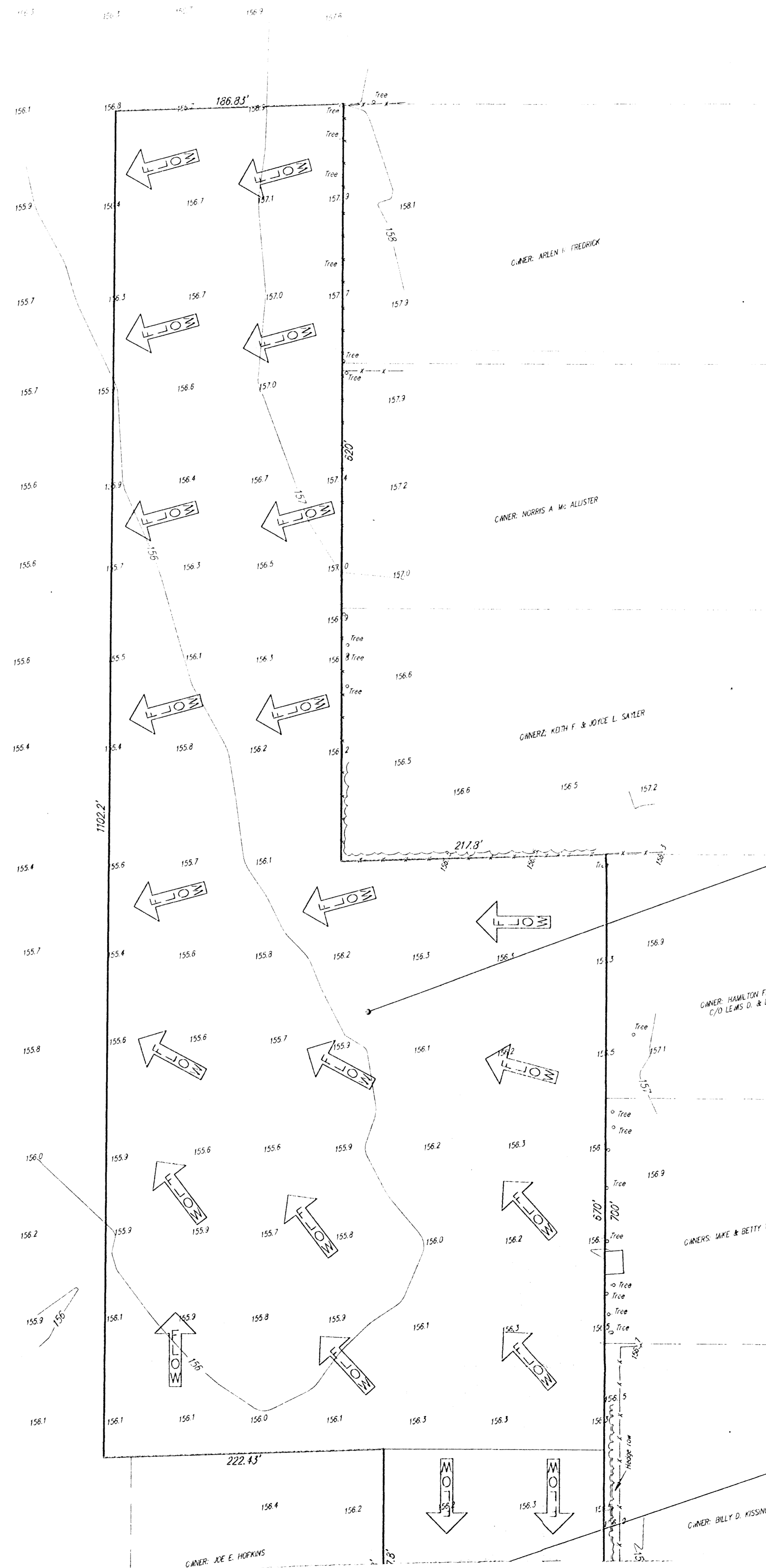
Commencing at the S.E. Corner of the SE1/4 of Sec. 13, Twp. 27S, R-2-W of the 6th P.M., Sedgwick County, Kansas; thence west on the south line of said SE1/4, 217.8 feet for a place of beginning; thence north parallel with the east line of said SE1/4, 700 feet; thence west parallel with the south line of said SE1/4, 217.8 feet; thence north parallel with the east line of said SE1/4, 620 feet; thence west parallel with the south line of said SE1/4, 186.83 feet; thence south parallel with the east line of said SE1/4, 1102.2 feet; thence east parallel with the south line of said SE1/4, 222.43 feet; thence south parallel with the east line of said SE1/4, 217.8 feet; thence east along the south line of said SE1/4, 182.2 feet to the place of beginning.

OWNER:

South Emporia Bible Chapel, Inc.
 Arnold L. Birke, Trustee
 2102 S. Emporia
 Wichita, Ks. 67211



VICINITY MAP



DRAINAGE AREA = 7.25
 C = 0.9
 Q₅ = 29.7 cfs
 Q₁₀₀ = 48.1 cfs

DRAINAGE AREA = 0.77
 C = 0.9
 Q₅ = 3.2 cfs
 Q₁₀₀ = 5.1 cfs