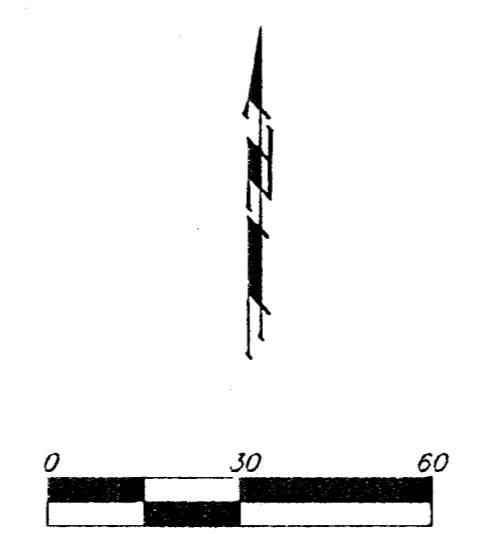
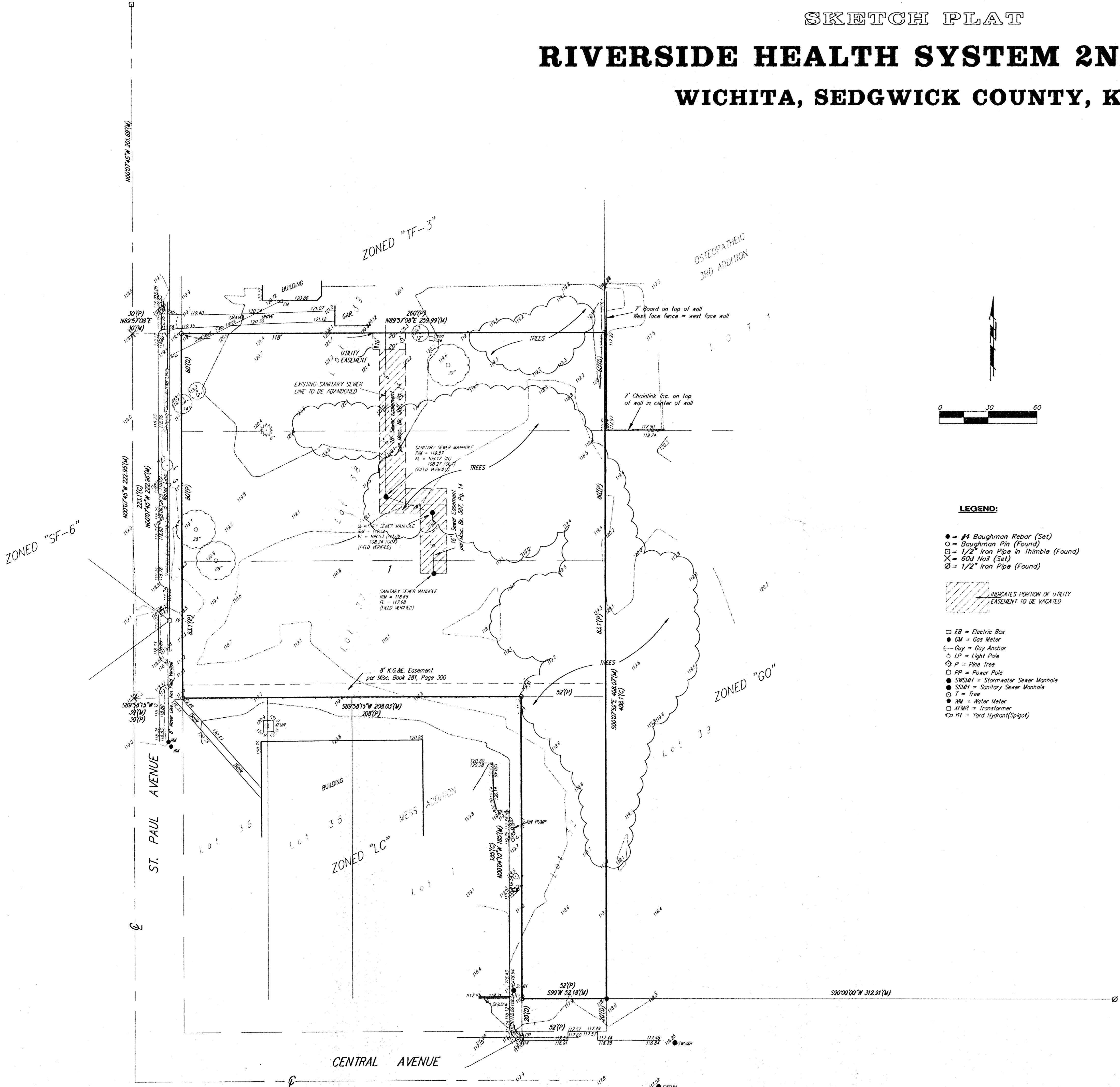


SKETCH PLAT

RIVERSIDE HEALTH SYSTEM 2ND ADDITION

WICHITA, SEDGWICK COUNTY, KANSAS

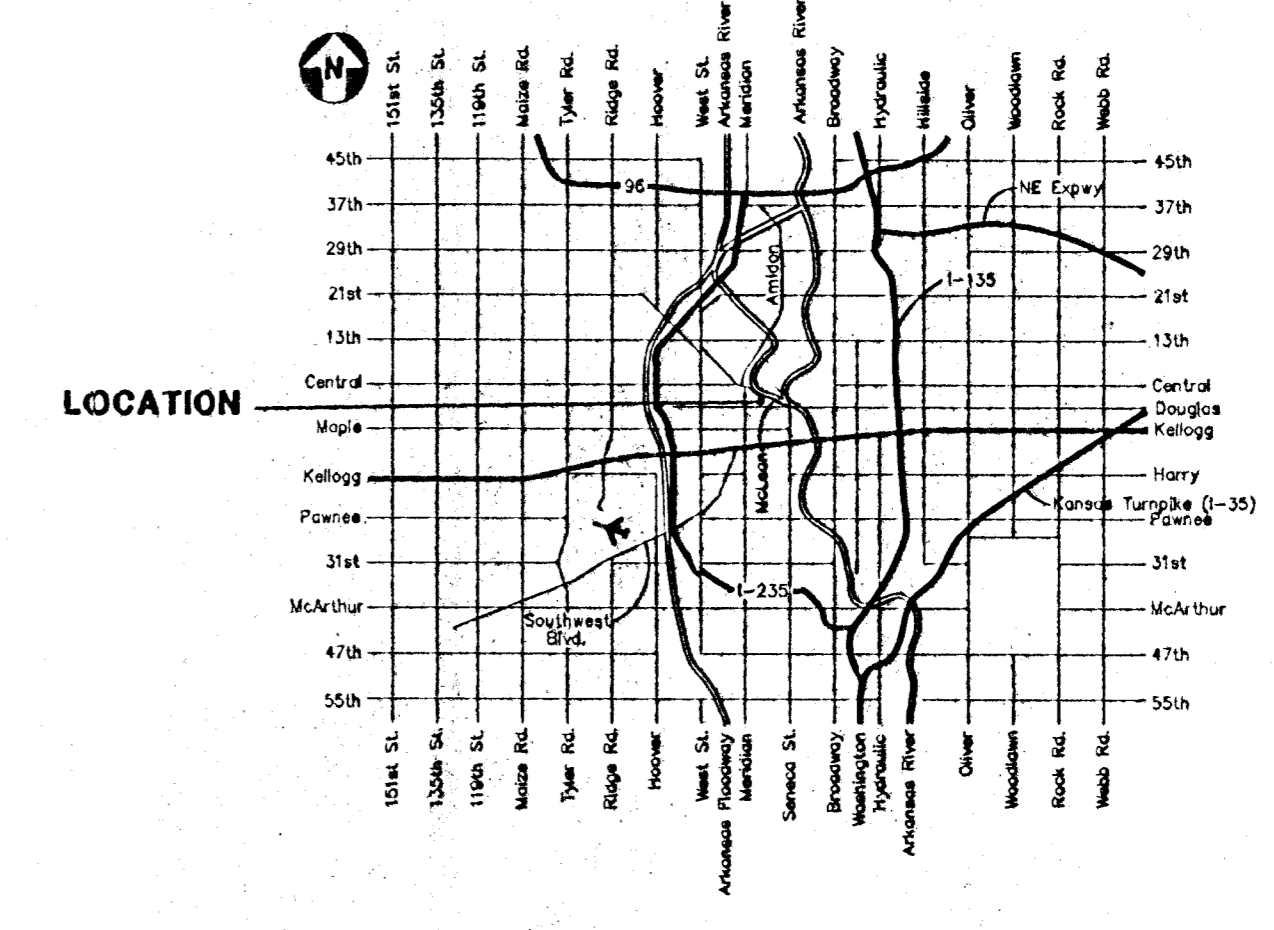


LEGAL DESCRIPTION:
 LOT 33, EXCEPT THE SOUTH 20 FEET THEREOF,
 ALL OF LOTS 31 AND 38 AND THE SOUTH 60
 FEET OF LOT 39, SIM PARK GARDENS,
 SEDGWICK COUNTY, KANSAS

OWNER:
 RIVERSIDE HEALTH SYSTEMS, INC.
 2622 W CENTRAL
 WICHITA, KANSAS 67203
 (316) 246-5000

BENCHMARK:
 "13" I.C. 158.50 NORTH AND 15.5 EAST OF
 CENTER LINE OF ST. PAUL AND CENTRAL
 ELEVATION = 118.83 CITY DATUM

- LEGEND:**
- = #4 Baughman Rebar (Set)
 - = Baughman Pin (Found)
 - = 1/2" Iron Pipe in Thimble (Found)
 - X = 60d Nail (Set)
 - ∅ = 1/2" Iron Pipe (Found)
- ▨ INDICATES PORTION OF UTILITY
 LEASEMENT TO BE VACATED
- EB = Electric Box
 - GM = Gas Meter
 - OA = Oxy Anchor
 - LP = Light Pole
 - P = Pine Tree
 - PP = Power Pole
 - SWSMH = Stormwater Sewer Manhole
 - SSMH = Sanitary Sewer Manhole
 - T = Tree
 - HM = Water Meter
 - TRMR = Transformer
 - YH = Yard Hydrant (Spigot)



VICINITY MAP