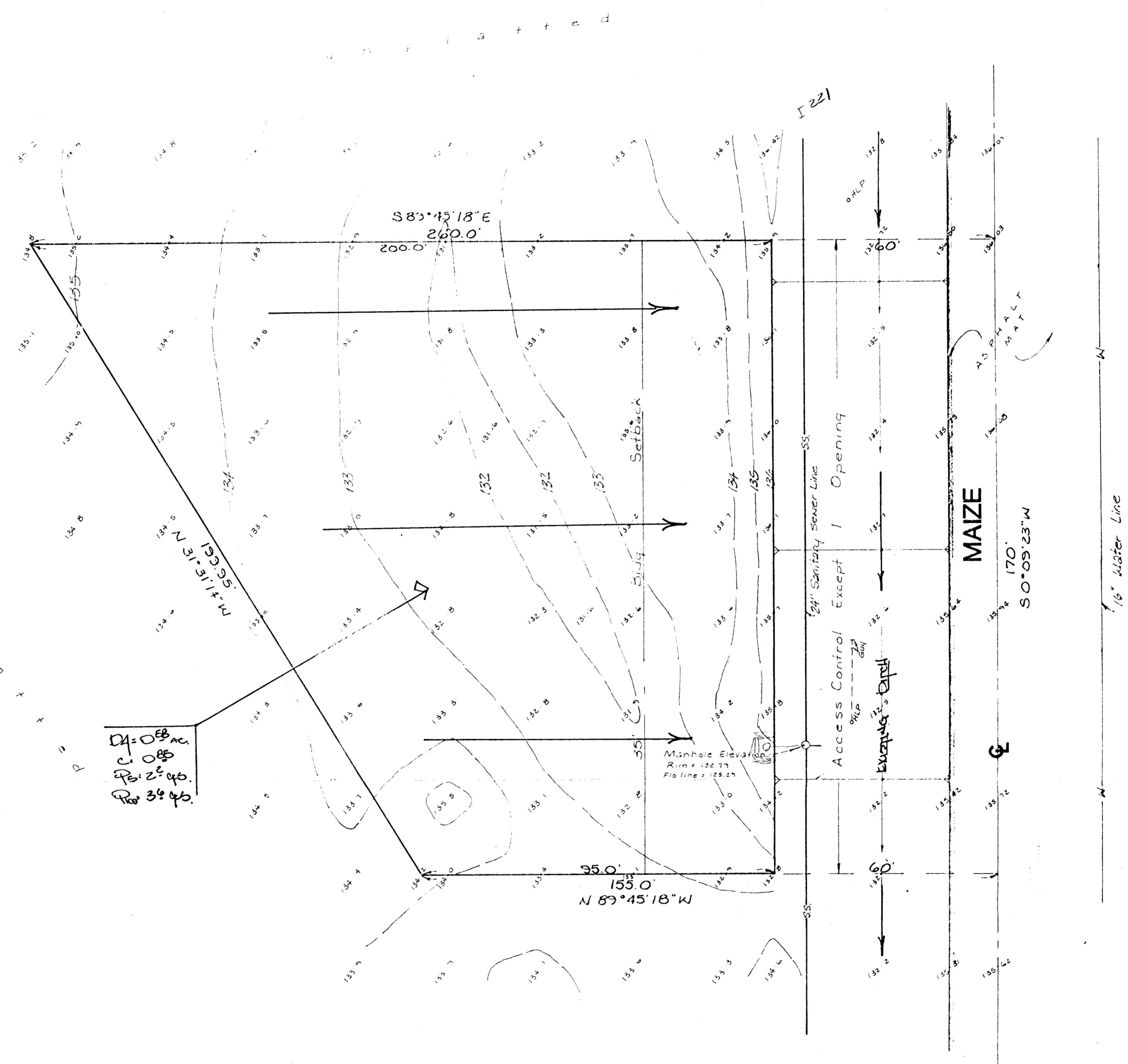




Bench Mark  
 'a' cut on south end of curb  
 Hardtner & Maize  
 Elev. = 134.50 City Datum



### SKETCH PLAT RIVERSIDE HOSPITAL 1ST ADDITION

Beginning at a point on the East line of the Northeast Quarter of Section 19, Township 27 South, Range 1 West of the 6th P.M., Sedgwick County, Kansas, 1205.80 feet South of the Northeast Corner of said Northeast Quarter; thence South 0 Degrees 09 Minutes 23 Seconds West along said East Line, 170 feet; thence North 89 Degrees 45 Minutes 18 Seconds West parallel to the North line of said Northeast Quarter, 155 feet; thence North 31 Degrees 31 Minutes 14 Seconds West, 129.95 feet; thence South 89 Degrees 45 Minutes 18 Seconds East parallel to said North line 160 feet to the point of beginning, except the East 60 feet thereof.

OWNER: RIVERSIDE HEALTH SERVICES, INC.

### DRAINAGE PLAN

**BAUGHMAN COMPANY, P.A.**  
 SURVEYING & ENGINEERING  
 318/262-7271 • 315 ELLIS • WICHITA, KANSAS 67211

11/4/88