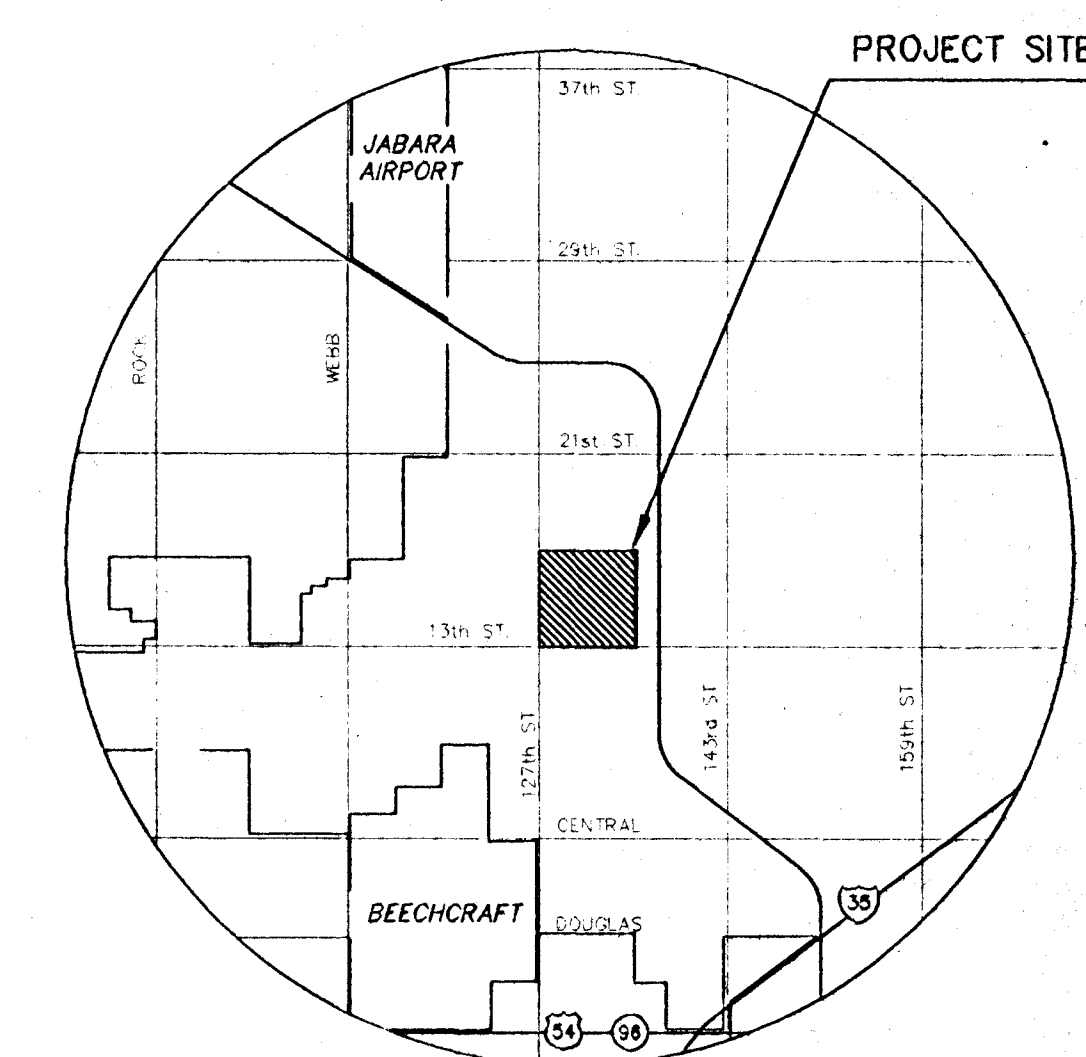


UNPLATTED MI-59
 UNPLATTED MI-59-1
 UNPLATTED MI-58
 N.W. COR. S.W. 1/4 SEC. 11, TWP. 27 R. 2E.
 S.L. & S.F. R.R.
 N.E. COR. S.W. 1/4 SEC. 11, TWP. 27 R. 2E.



VICINITY MAP

BENCHMARKS

BM #1 "□" CUT N. END W. HANDRAIL OF BRIDGE
 NO. 837N1495
 ELEV. = 1347.82

UNPLATTED

MI-60-1A

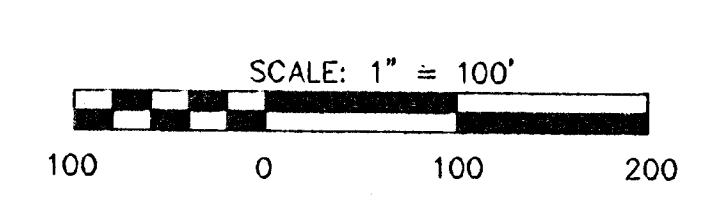
ZONING
 EXISTING - SF20
 PROPOSED - SF6 & LC

ISLAND RESERVE A-K, O, P & R
 ENTRY MONUMENTS & WALL
 LANDSCAPING
 IRRIGATION

POND RESERVE N, Q & S
 DRAINAGE
 LANDSCAPING
 OPEN SPACE
 IRRIGATION

FLOODWAY RESERVE L & M
 FLOODWAY
 OPEN SPACE

LOT MINIMUM PADS AS INDICATED
 ON DRAINAGE PLAN.

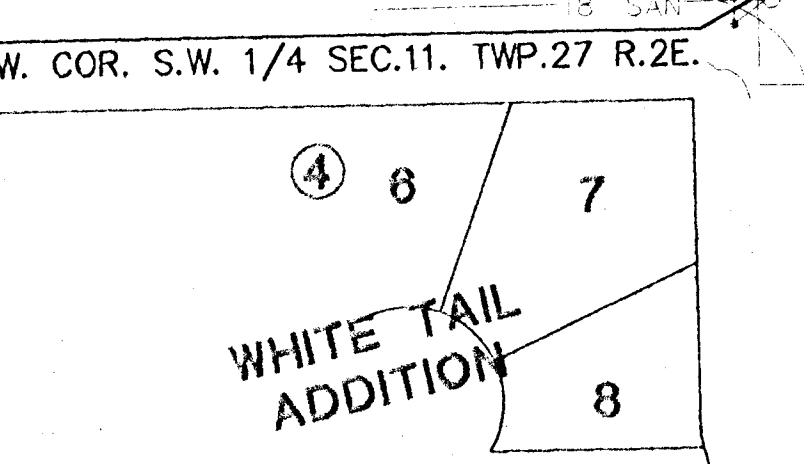


**PRELIMINARY PLAT
 ROCKY CREEK ADDITION**

OWNER: RITCHIE ASSOCIATES INC.
 8100 E. 22ND ST. NORTH
 BLDG. 1000
 WICHITA, KS. 67226

SURVEY BY M.J. HARDEN ASSOCIATES, INC.
 KANSAS CITY, MO.
 DATE OF PHOTOGRAPHY 11-23-1994

ROCKY CREEK ADDITION	
PROJECT NAME	
PRELIMINARY PLAT	
DESIGN TITLE	
G.J.A.	B.D.M.
DESIGN	DRAWN BY.
G.J.A.	6/18/96
CHECKED BY.	DATE
6081-PR-1	1
JOB NO.	SHEET NO.



WHITE TAIL ADDITION