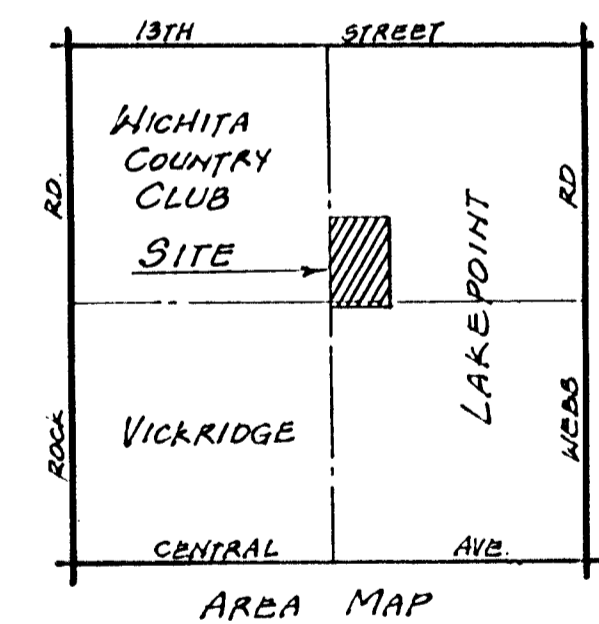
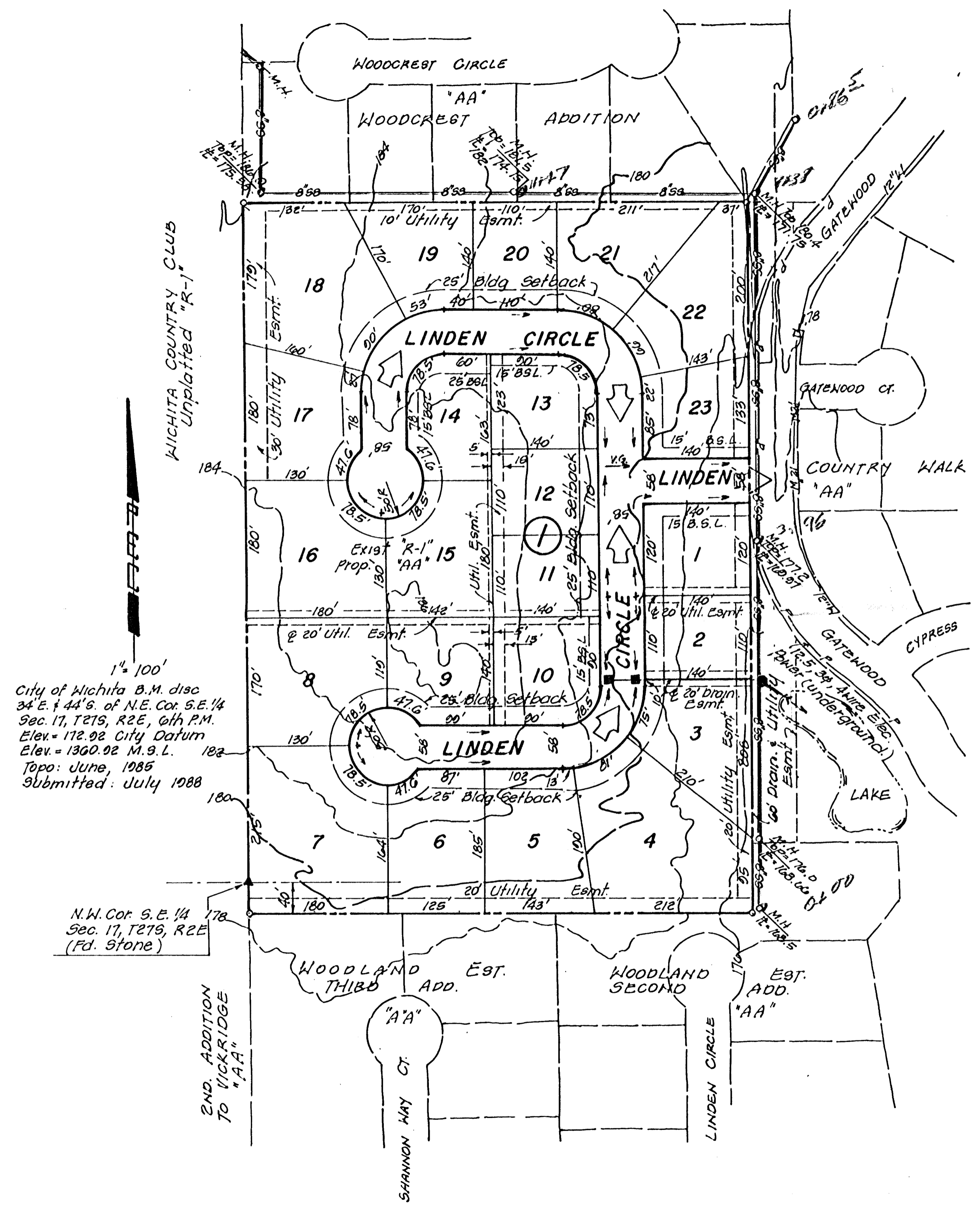


DRAINAGE CONCEPT 7-29-88
ROUNDS ESTATES

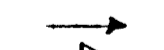


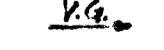
Owner:
 Dwight M. Rounds T. Trust
 c/o Betty B. Rounds
 330 N. Terrace
 Wichita, Ks. 67208

Developer:
 Ron Peake
 1700 Tamarisk
 Wichita, Ks. 67230

Engineer:
 P.E.C. p.a.
 1440 English
 Wichita, Ks. 67211



LEGEND

-  Drainage Direction - Minor Storm
-  Drainage Direction - Major Storm
-  Proposed Storm Water Sewer & Inlet
-  Proposed Valley Gutter