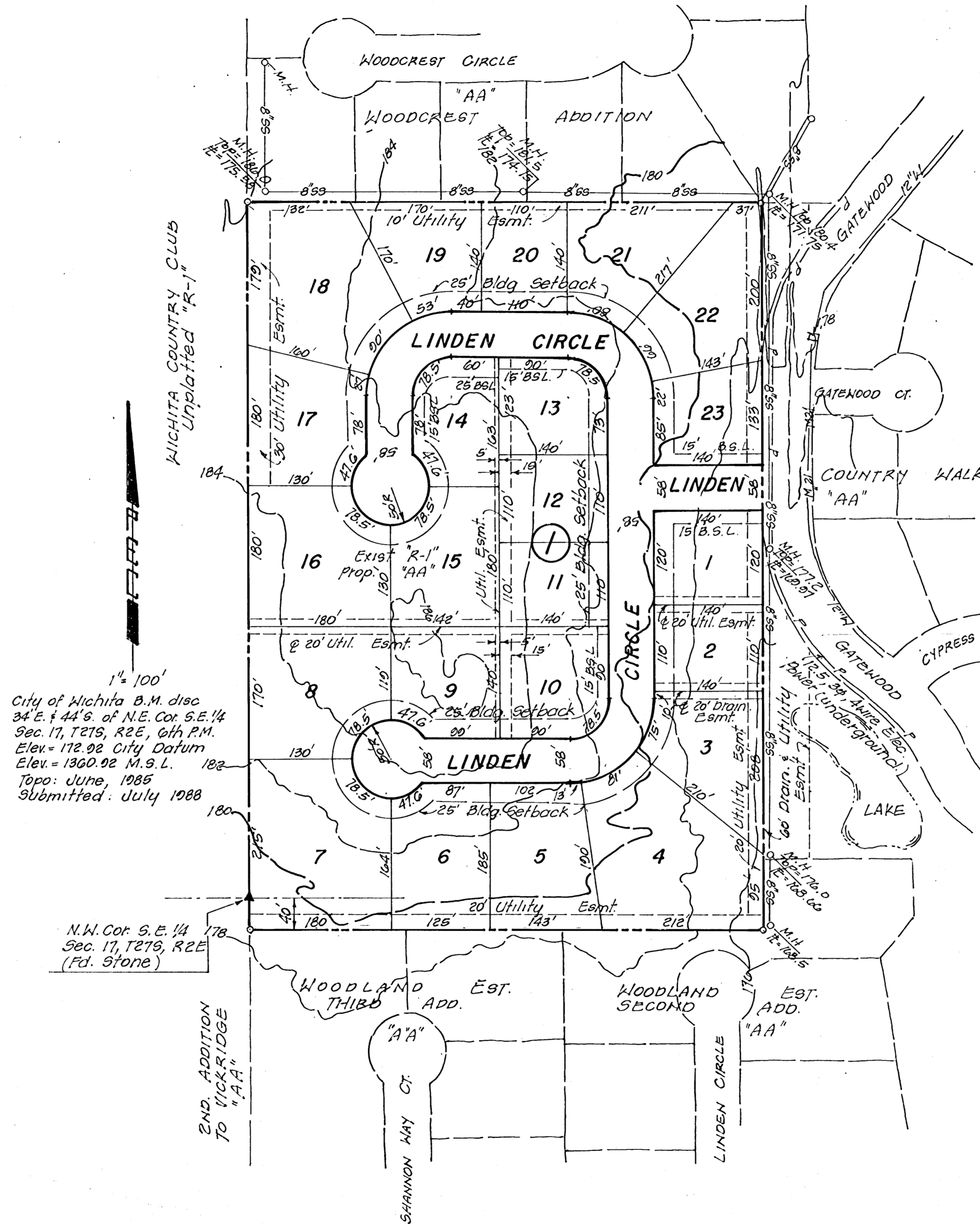


PRELIMINARY PLAT OF ROUNDS ESTATES

Owner:
Dwight M. Rounds T. Trust
c/o Betty B. Rounds
330 N. Terrace
Wichita, Ks. 67208

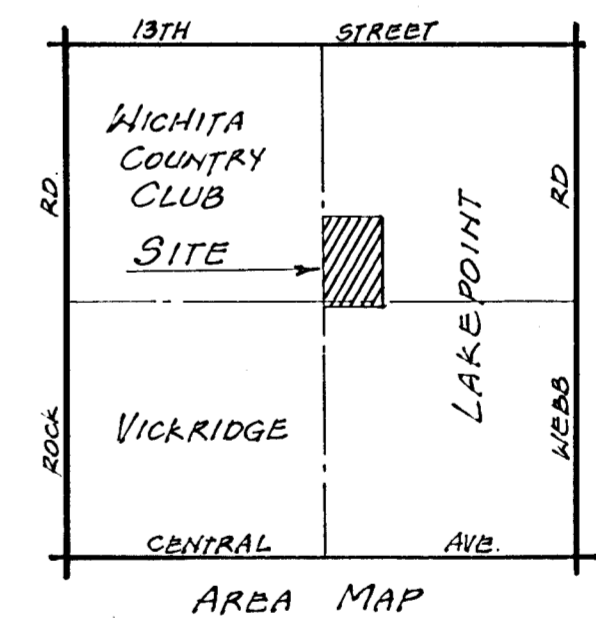
Developer:
Ron Peake
1700 Tamarisk
Wichita, Ks. 67230

Engineer:
P.E.C. p.a.
1440 English
Wichita, Ks. 67211



1" = 100'
City of Wichita B.M. disc
34' E. & 44' S. of N.E. Cor. S.E. 1/4
Sec. 17, T27S, R2E, 6th P.M.
Elev. = 172.92 City Datum
Elev. = 1360.92 M.S.L.
Topo: June, 1985
Submitted: July 1988

N.W. Cor. S.E. 1/4
Sec. 17, T27S, R2E
(Fd. Stone)



24 W15