

THE CITY OF WICHITA

OFFICE OF

ENGINEERING

DATE

JANUARY 16, 1980

TO JACK GALBRAITH, CHIEF PLANNER

FROM YASH D. DESAI, DRAINAGE CHIEF ENGINEER

SUBJECT DRAINAGE PLAN: ROYSE SECOND  
ADDITION

*Maehring & Assoc.*  
~~Baughman Company~~ has submitted the Lot Grading/Drainage Plan of the subject plat to my office for approval. The plan is satisfactory subject to the following conditions:

1. Lot 1 shall be graded to drain to 21st Street North via driveway, flumes and/or other approved drainage facility. Effort should be made to drain major portion of Lot 1 to the parking area at East line of lot, then out to 21st Street gutter via driveway. If any portion of drainage is taken to the Northwest Corner, a flume will be required to drain to the 21st Street gutter. The owner of Lot 1 shall agree to participate in the paving of Tobin Drive to the West.
2. A portion of Lot 2 shall drain West to the parking area and then out to 21st Street gutter via driveway. The remaining portion will drain to a proposed driveway to the East of the lot. The owner of Lot 2 shall agree to participate in the paving of Beaumont Street.
3. Since there is a common drainage outlet between Lots 1 and 2, an affidavit shall be signed between the owners of Lots 1 and 2 permitting surface drainage between Lots 1 and 2 and vice versa, recorded and copy sent to Public Works Engineering for files.

The approved drainage plan shall be retained in Engineering files for future reference.

I trust this is sufficient information to approve the plat. Please feel free to call me at (316)268-4235 if you need additional information.

---

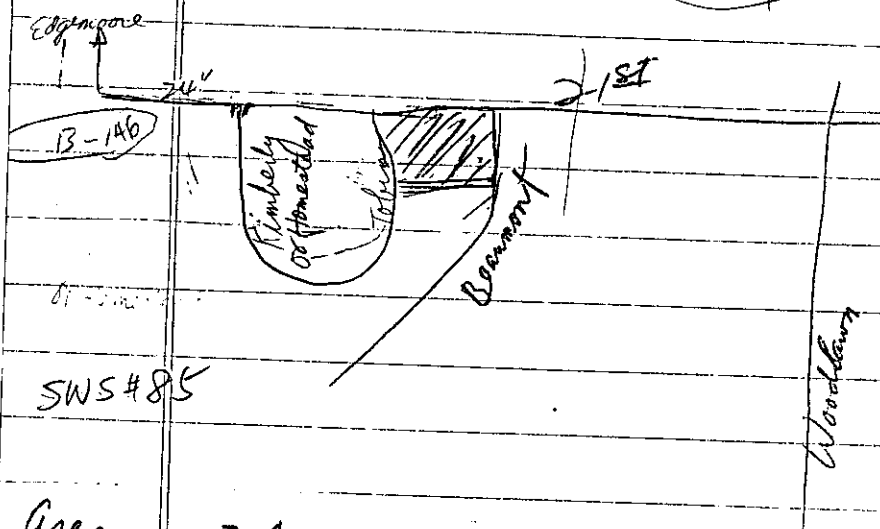
Yash D. Desai, P.E.  
Drainage Chief Engineer

YDD/dla

cc: *Maehring and Assoc.*  
~~Bill Korber, Baughman Company~~  
Robert Feldner, Supt. of Central Inspection Division

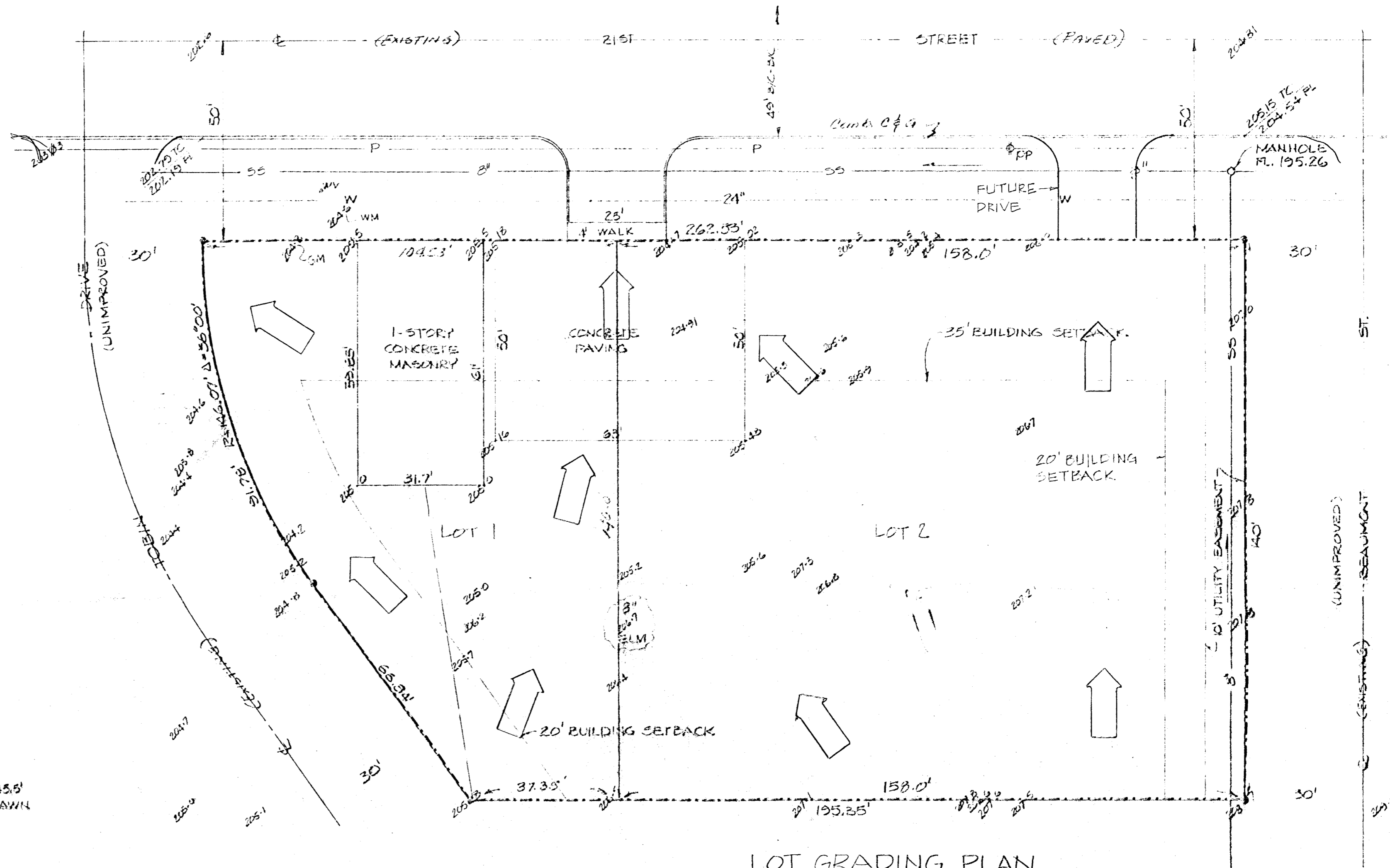
Royse Second Add'n

11-39

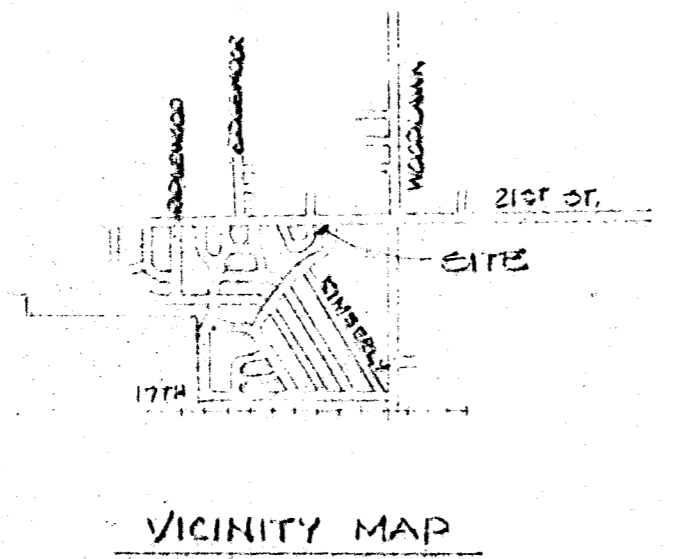


Area = .7 Ac

21<sup>st</sup> St drains west. Runoff is pick up at Homestead and drain to ditch at Edgemoore. Drainage concept for Royse Second Addition is O.K



N  
 1"=20'  
 IRON  
 BENCH MARK  
 CITY DEC 15.8' NORTH AND 15.5'  
 EAST OF E 21ST ST. & WOODLAWN



NOTE:  
 ALL DRAINAGE SHALL  
 ENTER PUBLIC R/W VIA  
 PIPES, FLUMES, DRIVEWAYS,  
 OR OTHER APPROVED  
 DRAINAGE FACILITIES.

LOT GRADING PLAN  
 TOPOGRAPHY AND VICINITY MAP  
 ROYSE SECOND ADDITION  
 TO WICHITA, SEDGWICK COUNTY, KANSAS

BEING A REPLAT OF ROYSE ADDITION  
 TO WICHITA, SEDGWICK COUNTY, KANSAS.

McEHRING & ASSOCIATES CONSULTING ENGINEERS  
 314 BROWN BUILDING WICHITA, KANSAS  
 DECEMBER, 1979  
 DEC. 31, 1979

Drainage Plan  
 1/16/80