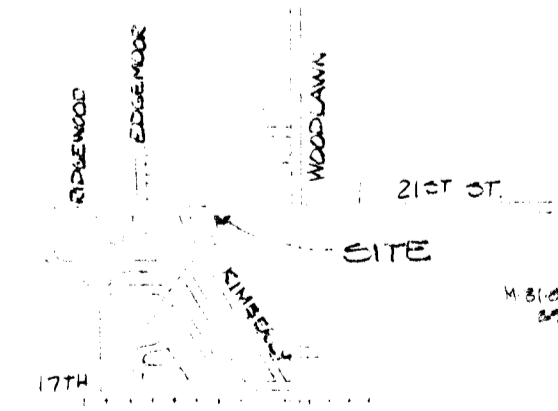
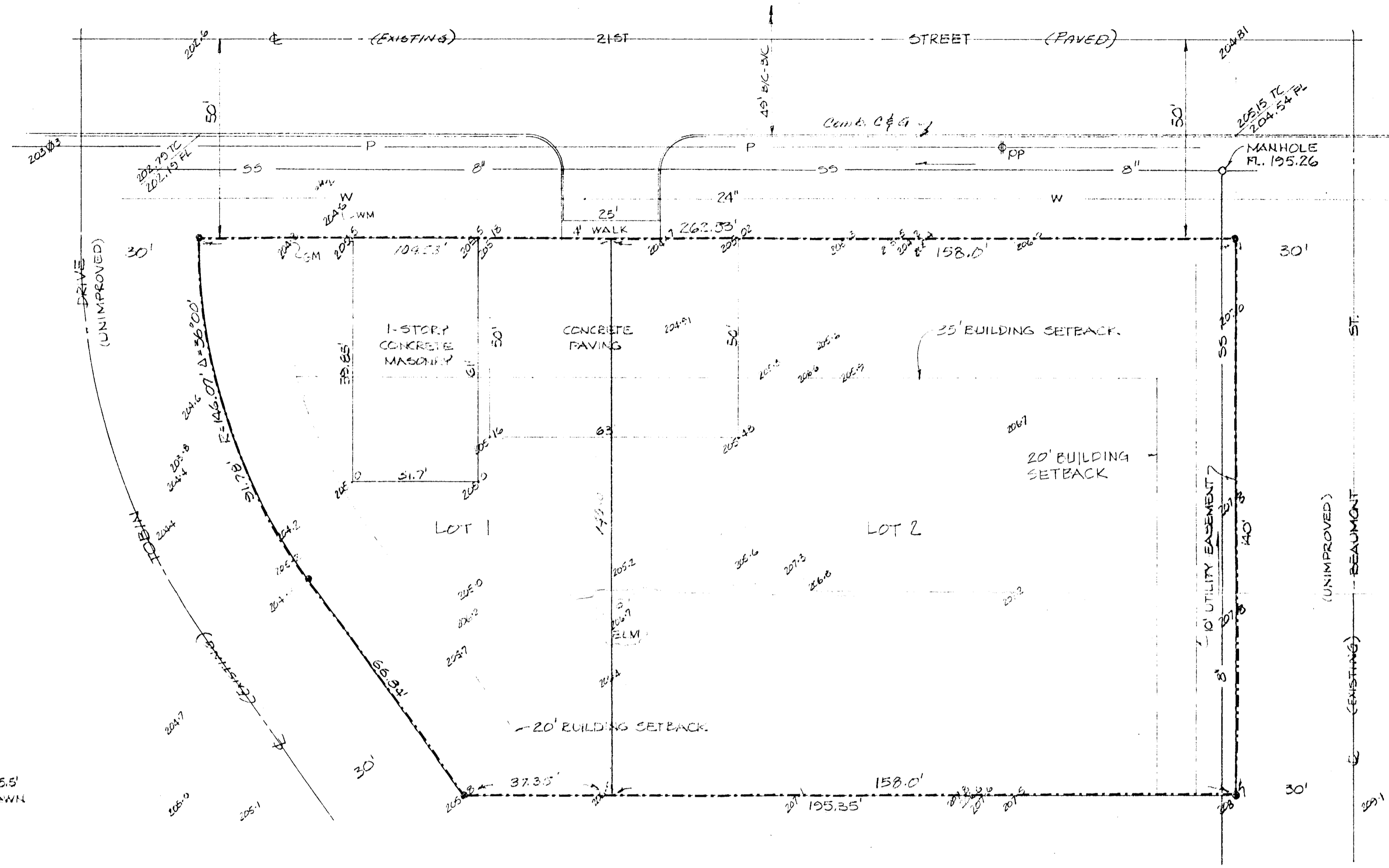


1"=20'
●=IRON

BENCH MARK
CITY DEPT 48.5' NORTH AND 45.5'
EAST OF E 21ST ST. & WOODLAWN



VICINITY MAP



TOPOGRAPHY AND VICINITY MAP
ROYSE SECOND ADDITION
TO WICHITA, SEDGWICK COUNTY, KANSAS

BEING A REPLAT OF ROYSE ADDITION
TO WICHITA, SEDGWICK COUNTY, KANSAS.

Boite Moring II
MOHRING & ASSOCIATES CONSULTING ENGINEERS
314 BROWN BUILDING WICHITA, KANSAS
DECEMBER, 1977

