

SCALE : 1" = 50'

LEGAL DESCRIPTION

Beginning at the Southwest corner of Smithmoor Fifth Addition to Wichita, Sedgwick County, Kansas, said point of beginning being on the West line of the Northeast quarter of Section 33, Township 27 South and Range 2 East of the 6th P.M. in Sedgwick County, Kansas; Thence South along the West line of said Northeast quarter, 558.90 feet, more or less to the Southwest corner of said Northeast quarter; Thence East along the South line of said Northeast quarter, 840.00 feet; Thence North 553.76 feet to the Southeast corner of Smithmoor Fifth Addition; Thence West along the South line of Smithmoor Fifth Addition, 840.00 feet to the point of beginning, containing 10.7 acres, more or less.

SUBDIVIDER

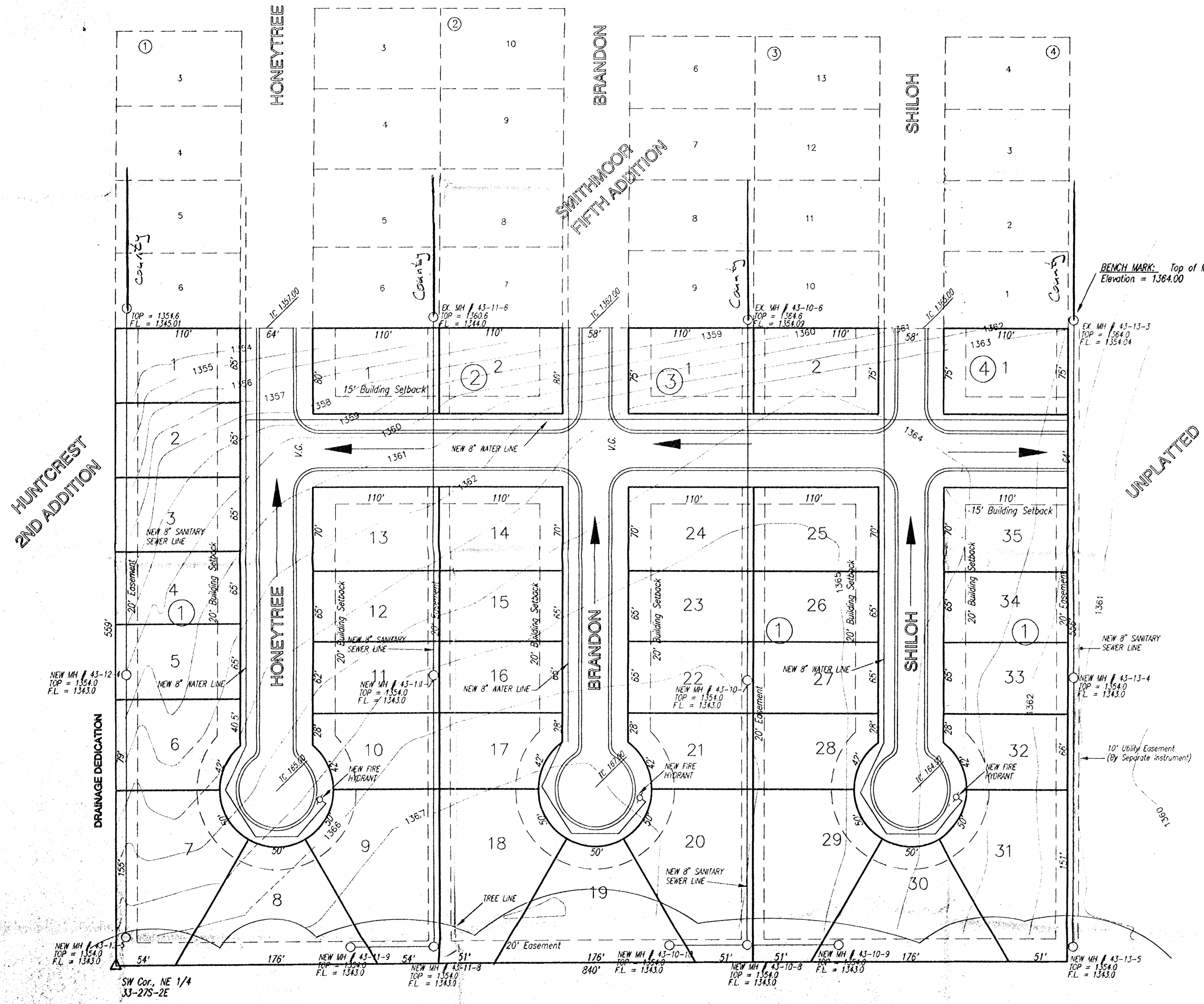
Smith & Company
P.O. Box 780595
Wichita, Kansas 67278

SURVEYOR / ENGINEER

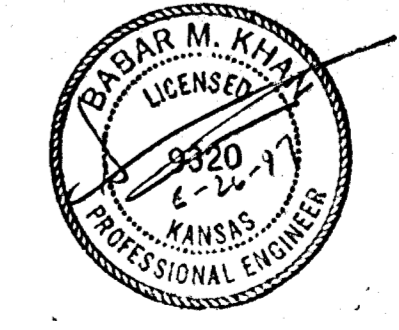
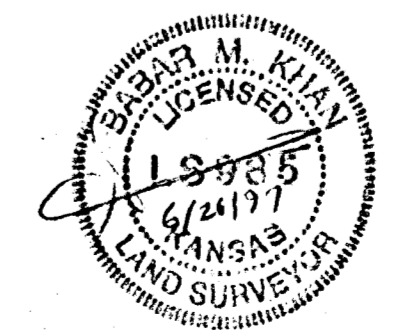
Babar M. Khan P.E., L.S.
Municipal Engineers, P.A.
254-Laura, Suite 201
Wichita, Kansas 67211

SMITHMOOR SEVENTH ADDITION

NUMBER OF LOTS 40 RESIDENTIAL
MINIMUM LOT AREA 7,000 S.F.
CURRENT ZONING "A"



**PRELIMINARY PLAT
SMITHMOOR SEVENTH ADDITION
TO
WICHITA, SEDGWICK COUNTY, KANSAS**



ME MUNICIPAL ENGINEERS, P.A.
254-Laura, Suite 201
Wichita, Kansas 67211
318-262-3842

C:\199711_Thu Jun 28 14:26:51 1997