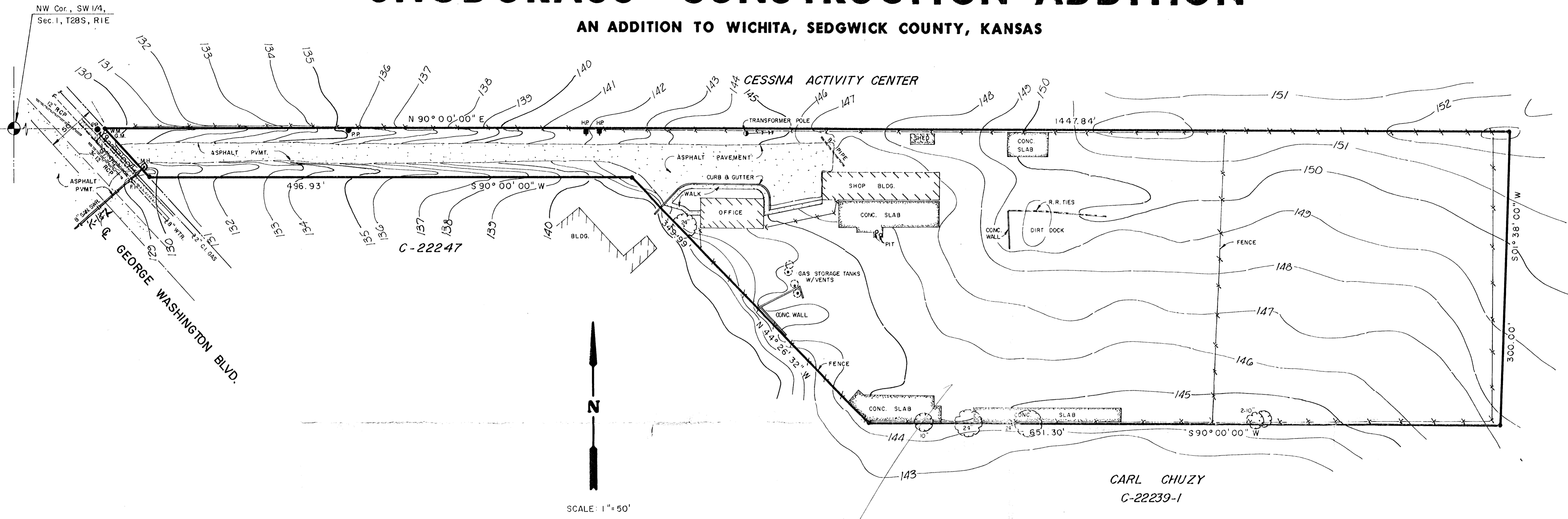


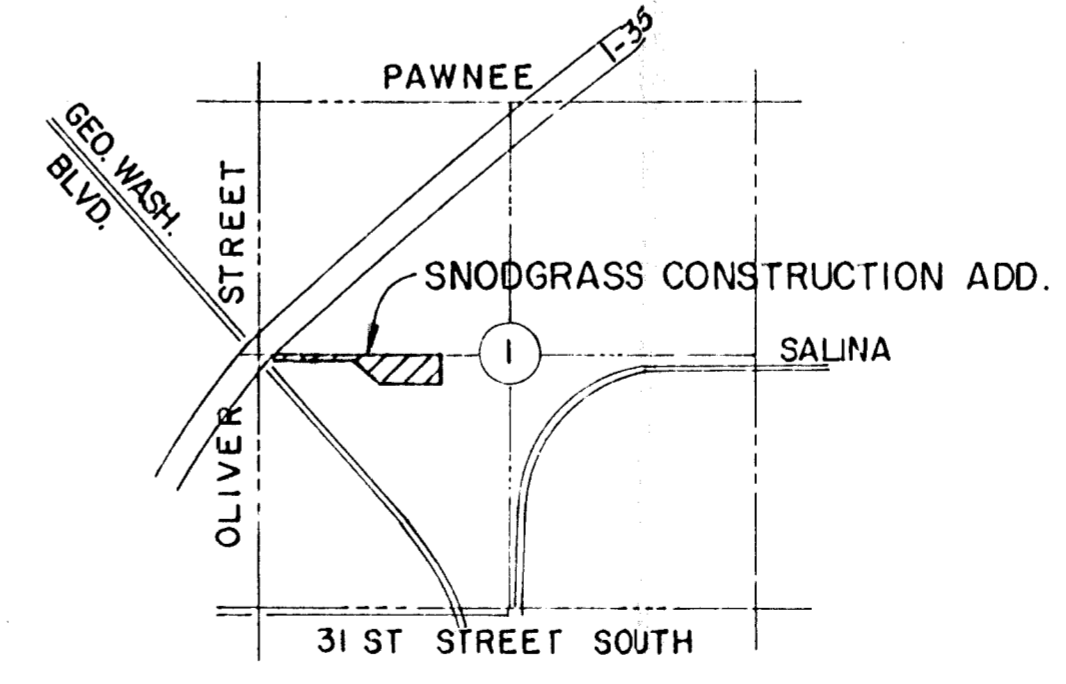
PRELIMINARY PLAT FOR SNODGRASS CONSTRUCTION ADDITION

AN ADDITION TO WICHITA, SEDGWICK COUNTY, KANSAS



CARL CHUZY
C-22239-1

OWNER:
SNODGRASS CONSTRUCTION ADDITION
2700 GEORGE WASHINGTON BLVD.
WICHITA, KANSAS 67221
(316) 687-3110



LOCATION MAP

	PRELIMINARY PLAT	Design
	SNODGRASS CONSTRUCTION ADDITION	Drawn by DPR Checked by
MID-KANSAS ENGINEERING CONSULTANTS PA 3500 NORTH ROCK ROAD BUILDING #800 WICHITA, KANSAS 67226		Date 11-20-87 Job no.
682-6561		Sheet of