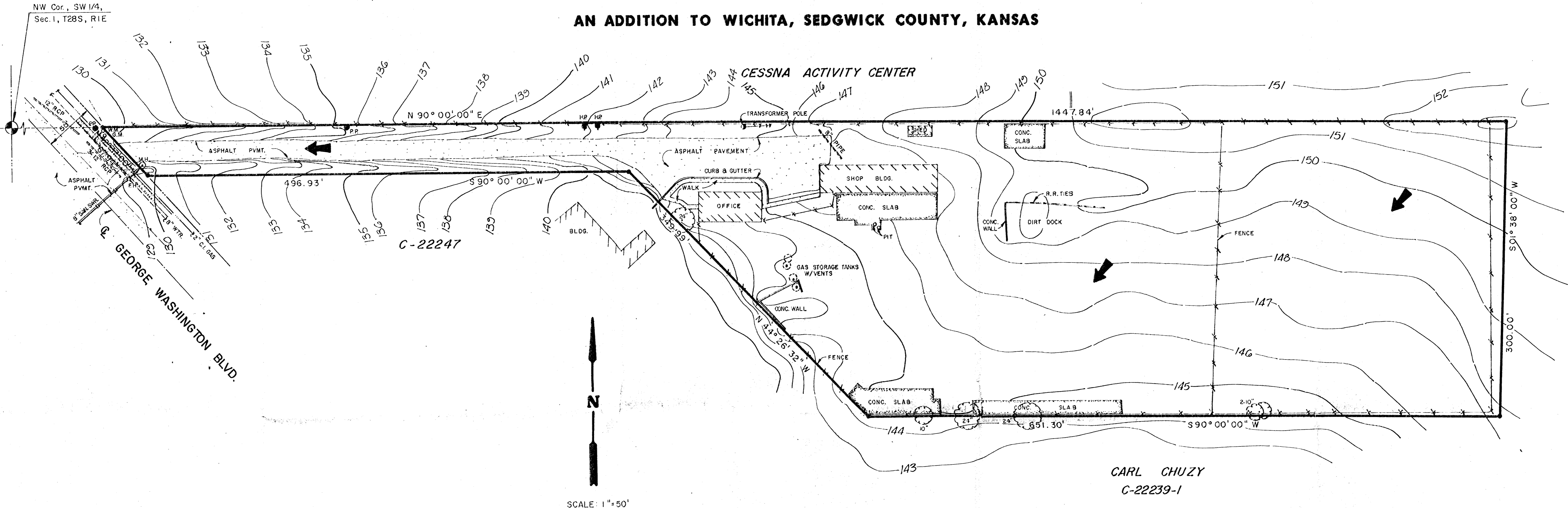


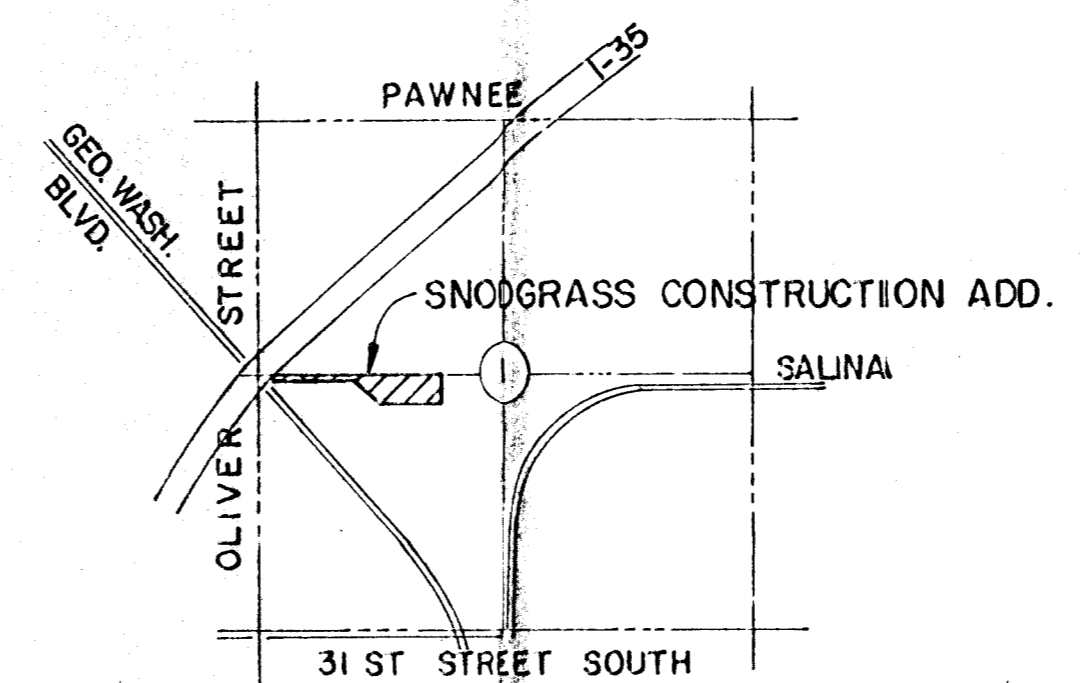
DRAINAGE & UTILITY CONCEPT

SNODGRASS CONSTRUCTION ADDITION

AN ADDITION TO WICHITA, SEDGWICK COUNTY, KANSAS



OWNER:
 SNODGRASS CONSTRUCTION ADDITION
 2700 GEORGE WASHINGTON BLVD.
 WICHITA, KANSAS 67221
 (316) 687-3110



LOCATION MAP

	DRAINAGE & UTILITY CONCEPT	Design
	SNODGRASS CONSTRUCTION ADDITION	Drawn by DPR
		Checked by
		Date 11-20-87
		Job no.
MID-KANSAS ENGINEERING CONSULTANTS PA 3500 NORTH ROCK ROAD BUILDING #800 WICHITA, KANSAS 67226		Sheet 682-6561 cd