

**DRAINAGE PLAN OF:
TIMBROOK 3rd ADDITION
WICHITA, SEDGWICK COUNTY, KANSAS.**

OWNER: Cerebral Palsy Research Foundation.
2021 N. Old Manor

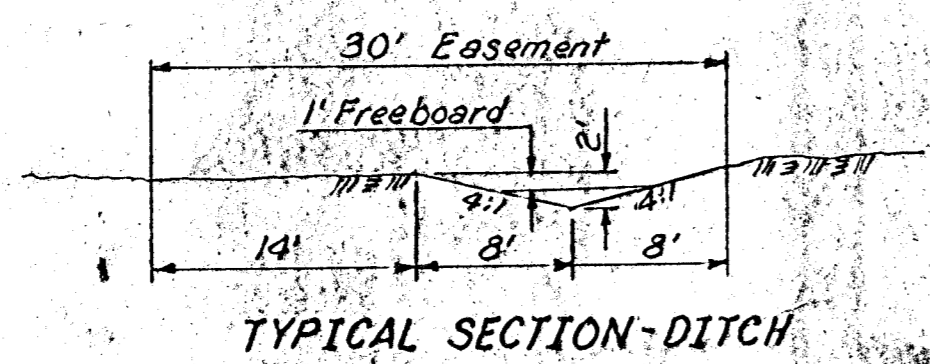
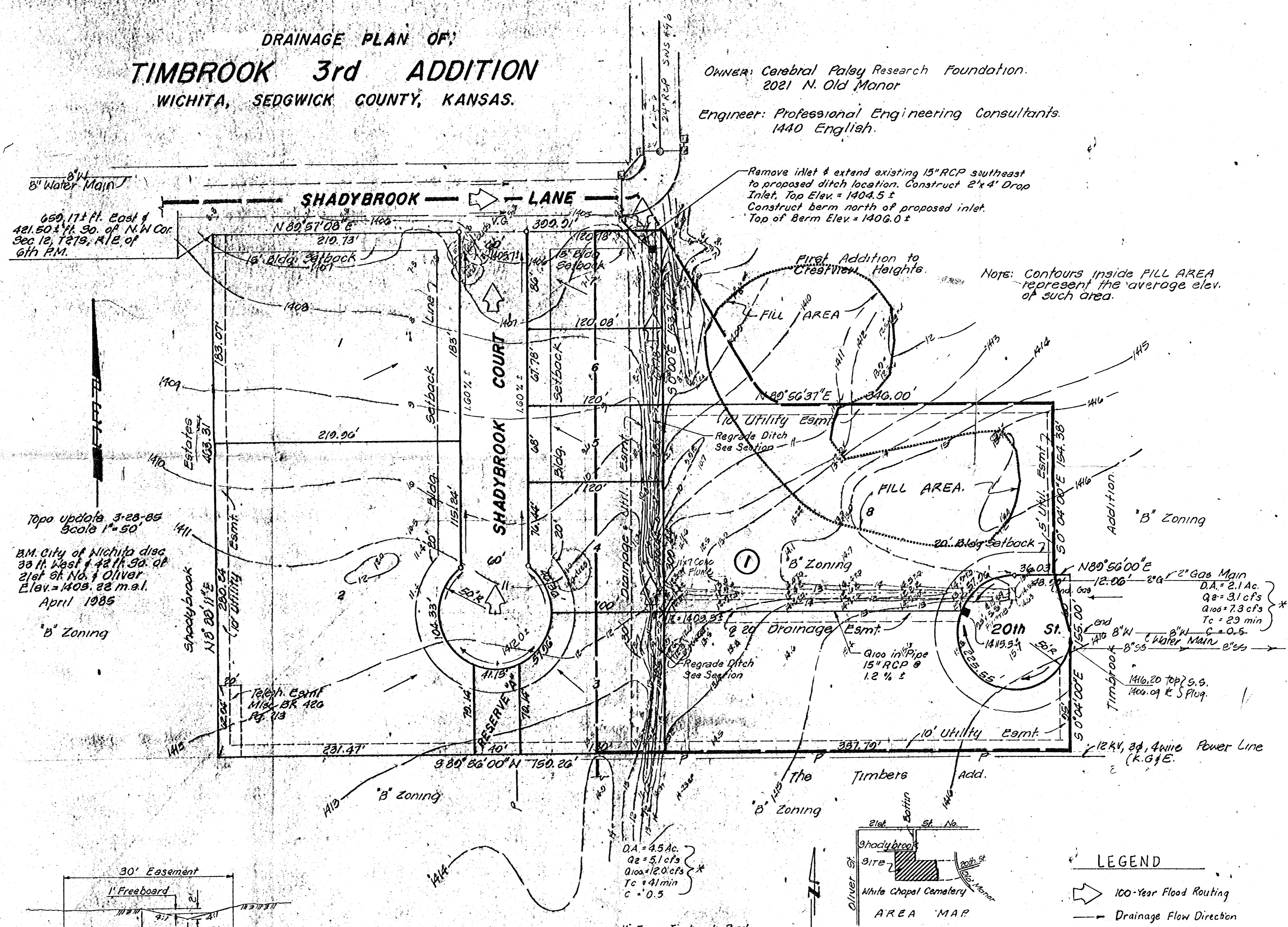
Engineer: Professional Engineering Consultants.
1440 English.

650.17± ft. East &
421.50± ft. So. of N.W. Cor.
Sec. 12, T29, R1E of
6th P.M.

Topo update 3-28-85
Scale 1"=50'
B.M. City of Wichita disc
30 ft. West & 42 ft. So. of
21st St. No. 1 Oliver
Elev. = 1408.22 m.a.l.
April 1985
"B" Zoning

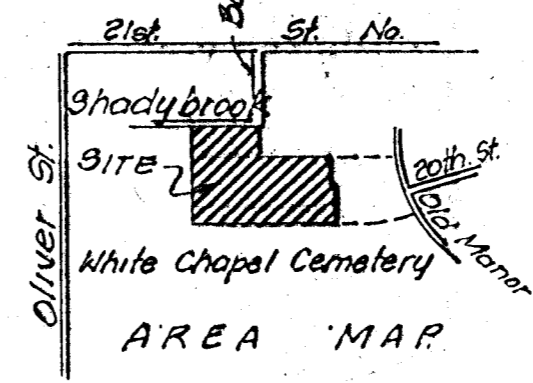
Remove inlet & extend existing 15" RCP southeast
to proposed ditch location. Construct 2'x4' Drop
Inlet. Top Elev. = 1404.5 ±
Construct berm north of proposed inlet.
Top of Berm Elev. = 1406.0 ±

Note: Contours inside FILL AREA
represent the average elev.
of such area.



DA = 4.5 Ac.
Q2 = 5.1 cfs
Q100 = 12.0 cfs
Tc = 41 min
C = 0.5

* From Timbrook 2nd
Approved Drainage Plan



- LEGEND**
- ➔ 100-Year Flood Routing
 - ➔ Drainage Flow Direction
 - Proposed Inlet
 - Existing Inlet

