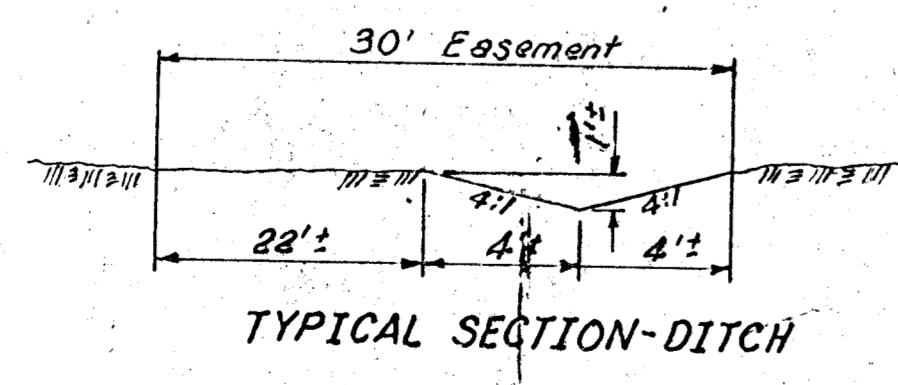
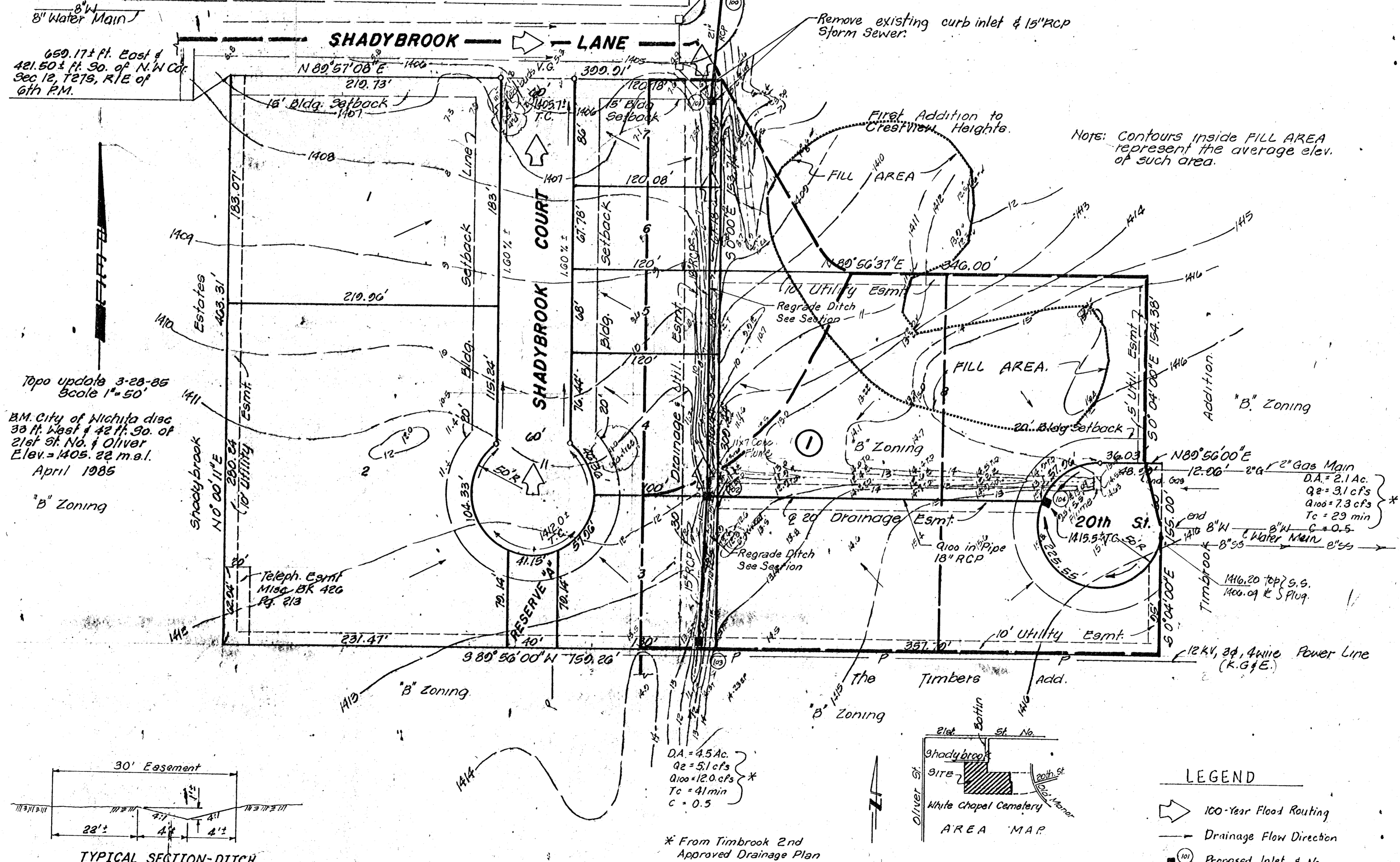


**DRAINAGE PLAN OF:
TIMBROOK 3rd ADDITION
WICHITA, SEDGWICK COUNTY, KANSAS.**

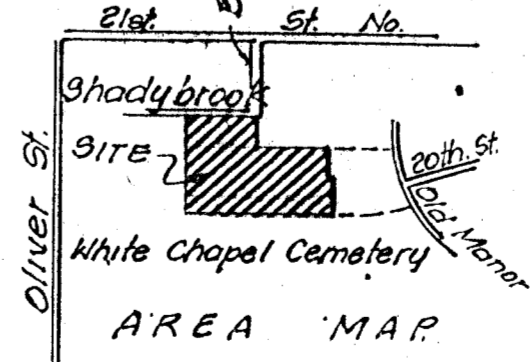
OWNER: Cerebral Palsy Research Foundation.
2021 N. Old Manor

Engineer: Professional Engineering Consultants.
1440 English.



D.A. = 4.5 Ac.
Q₂ = 5.1 cfs
Q₁₀₀ = 12.0 cfs
T_c = 41 min
C = 0.5

* From Timbrook 2nd Approved Drainage Plan



- LEGEND**
- 100-Year Flood Routing
 - Drainage Flow Direction
 - Proposed Inlet & No.
 - Existing Inlet
 - Drainage Boundary

