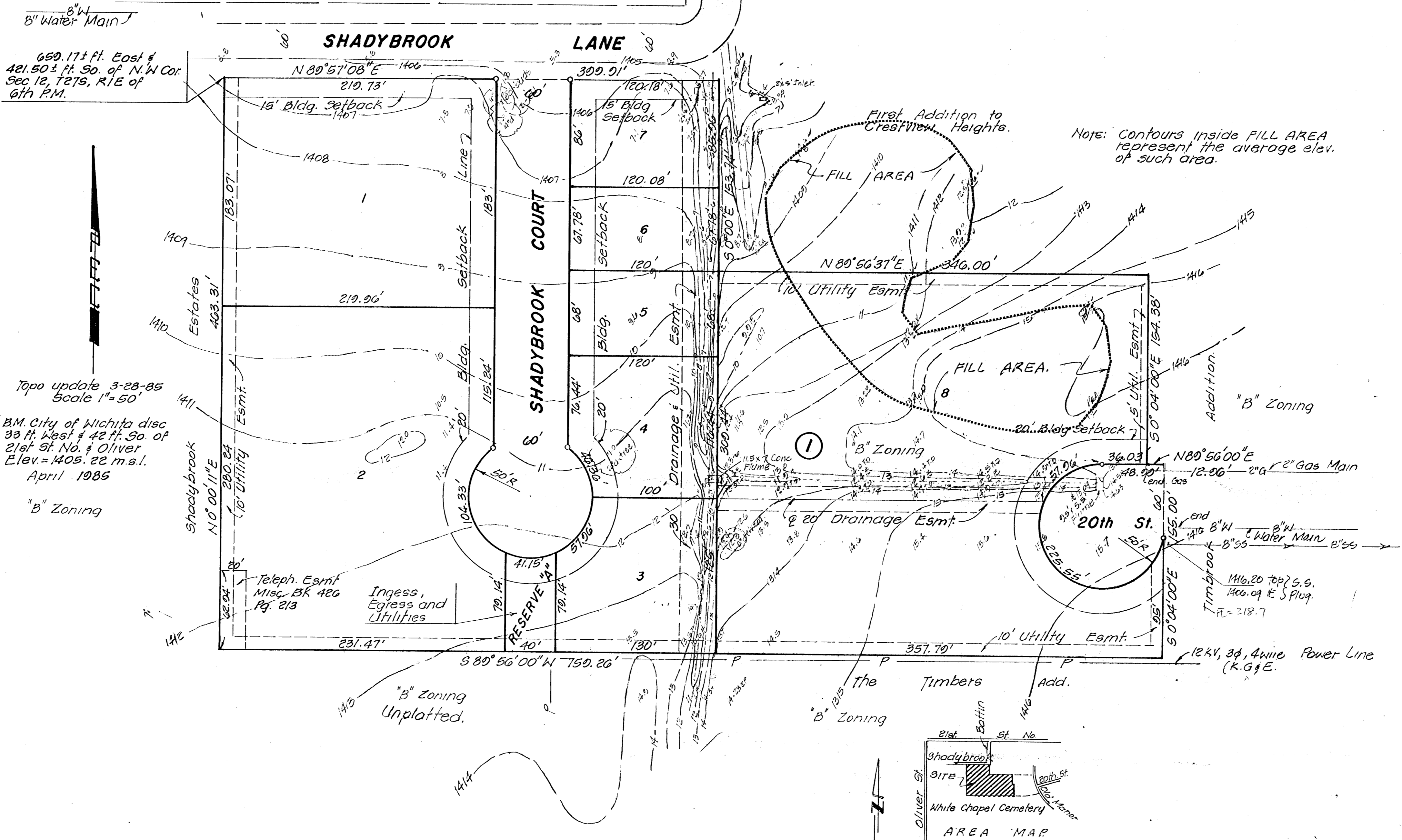


PRELIMINARY PLAT OF:
TIMBROOK 3rd ADDITION
 WICHITA, SEDGWICK COUNTY, KANSAS.

OWNER: Cerebral Palsy Research Foundation of Kansas Inc.
 2021 N. Old Manor

Engineer: Professional Engineering Consultants
 1440 English.



659.17± ft. East &
 421.50± ft. So. of N.W. Cor.
 Sec 12, T27S, R1E of
 6th P.M.

Topo update 3-28-85
 Scale 1"=50'
 B.M. City of Wichita disc
 33 ft. West & 42 ft. So. of
 21st St. No. & Oliver
 Elev. = 1405.22 m.s.l.
 April 1985

Note: Contours inside FILL AREA
 represent the average elev.
 of such area.

