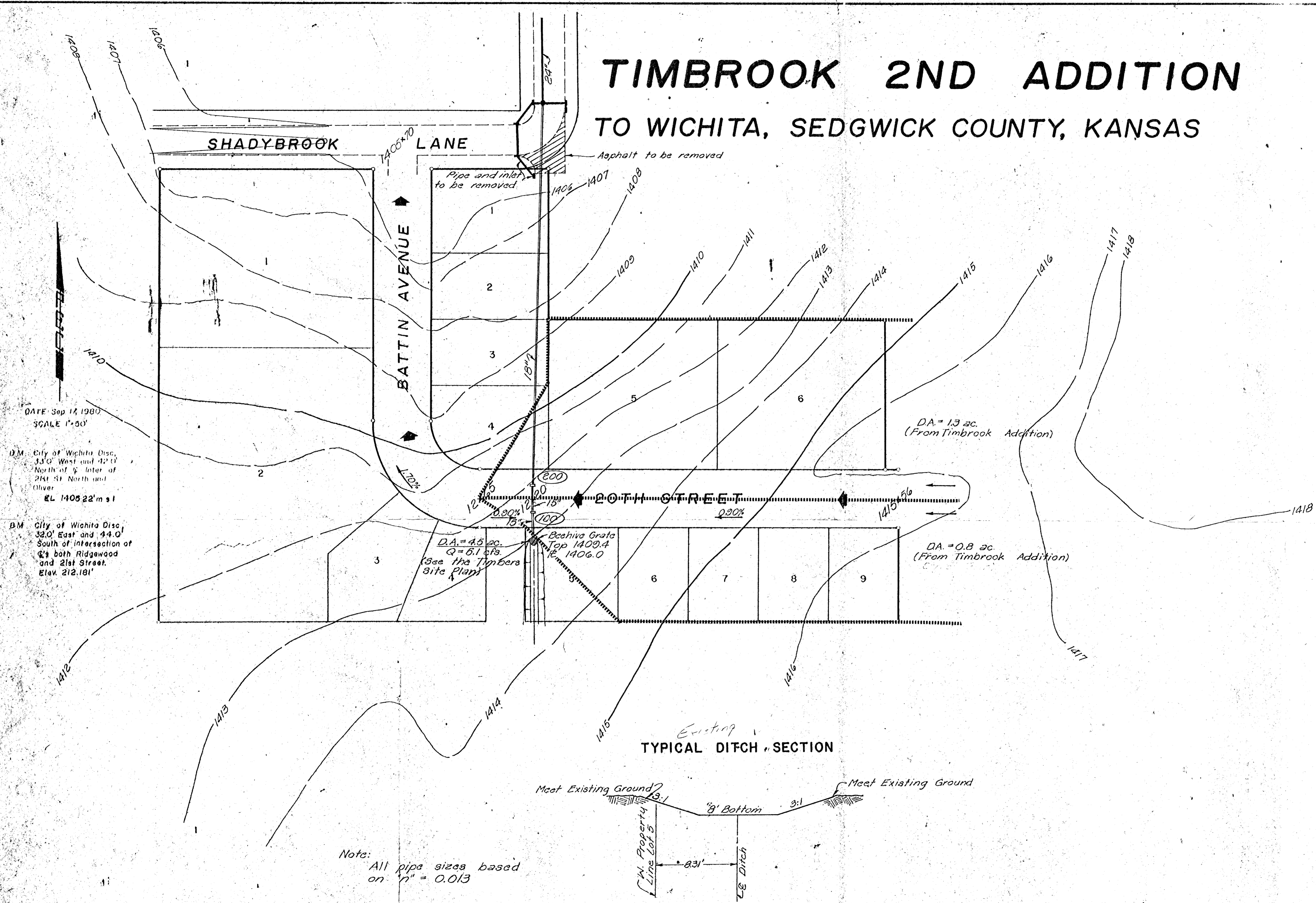


TIMBROOK 2ND ADDITION TO WICHITA, SEDGWICK COUNTY, KANSAS



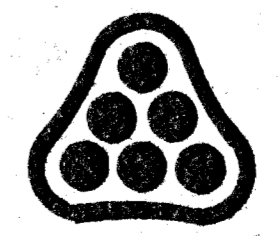
DATE Sep 17, 1980
SCALE 1"=50'

D.M. City of Wichita Disc.
33.0' West and 42.0'
North of 1/4 Inter of
21st St North and
Oliver
EL 1405.22' m.s.l.

B.M. City of Wichita Disc.
38.0' East and 44.0'
South of intersection of
6th both Ridgewood
and 21st Street.
Elev. 212.181'

Existing
TYPICAL DITCH SECTION

Note:
All pipe sizes based
on $n = 0.013$



TIMBROOK 2ND ADDITION
**DRAINAGE CONCEPT
AND PLAN**
October 3, 1980 Designed by KJH