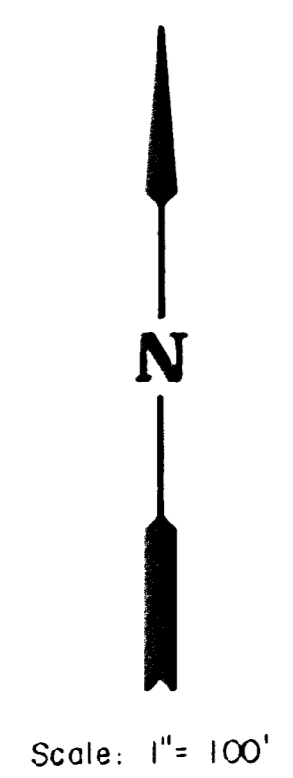


N.E. Cor. NE 1/4 Sec. 31,
T. 26S., R. 2 E.

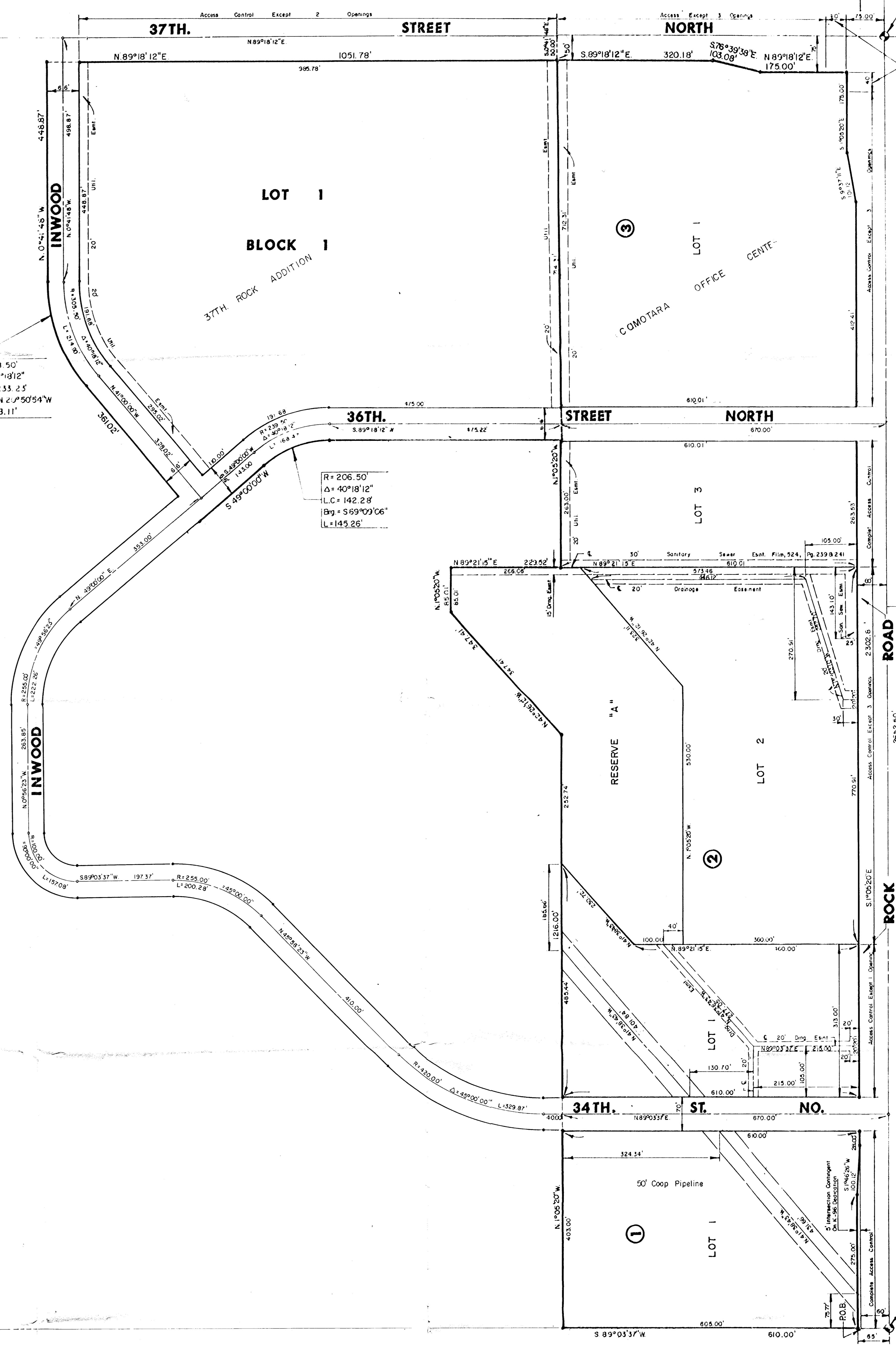
Complete Access Control

35TH. ST. NO.

S.E. Cor. NE 1/4 Sec. 31,
T. 26S., R. 2 E.



Center Sec. 31
T. 26S., R. 2 E.



R = 318.50'
Δ = 40°18'12"
L.C. = 233.25'
Btg. = N 2°50'54"W
L = 238.11'

R = 206.50'
Δ = 40°18'12"
L.C. = 142.28'
Btg. = S 69°09'06"
L = 143.26'

	37TH. ROCK ADD. COMOTARA OFFICE CTR. PETITIONS		Design	
			Drawn by	
			Checked by	
			Date	
			Scale	
MID-KANSAS ENGINEERING CONSULTANTS PA 240 NORTH ROCK ROAD SUITE 130 WICHITA, KANSAS 67206		682-6561	Sheet	1
			of	1