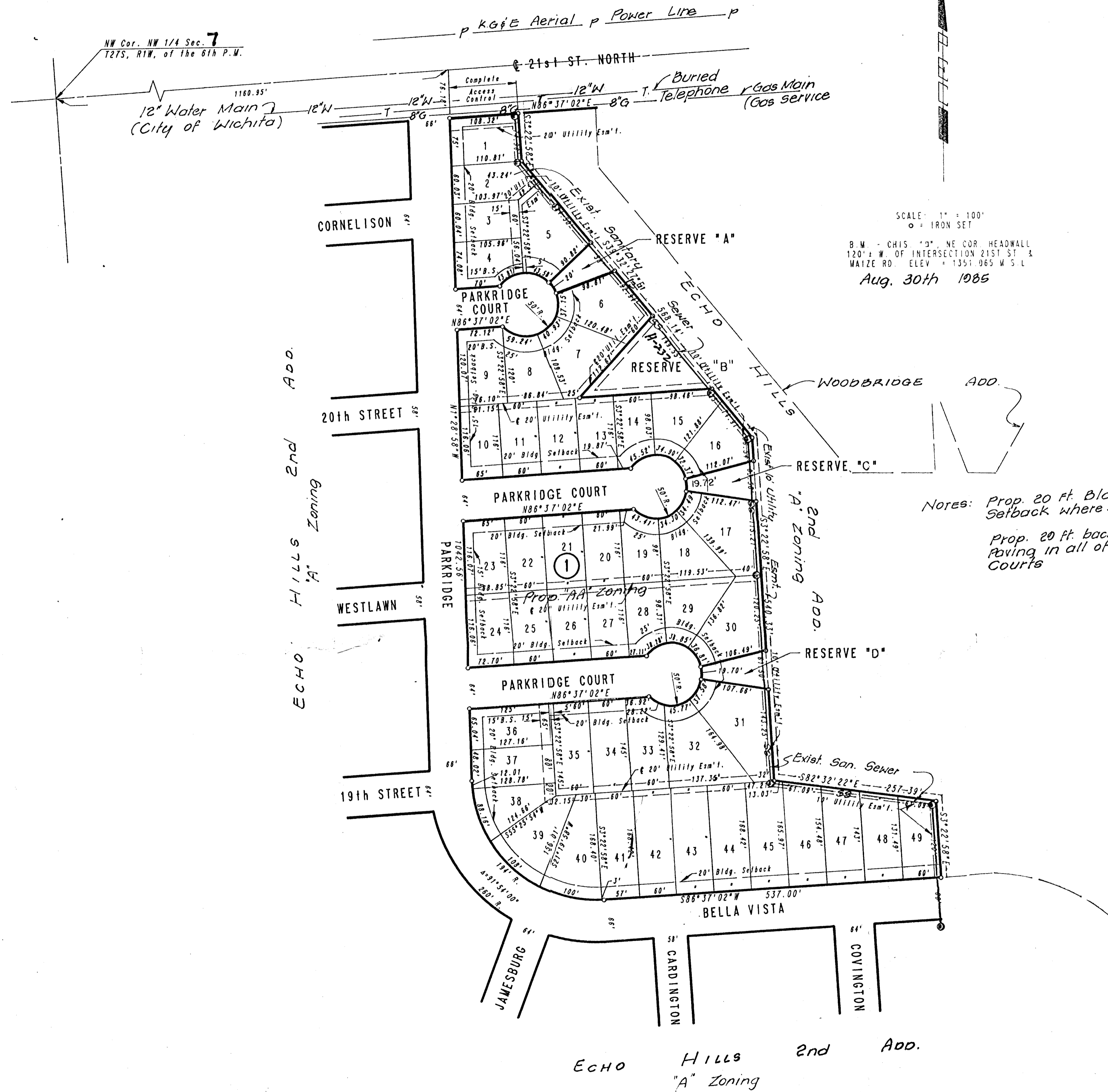


SKETCH PLAT WOODBIDGE 2ND ADDITION

TO WICHITA, SEDGWICK COUNTY, KANSAS

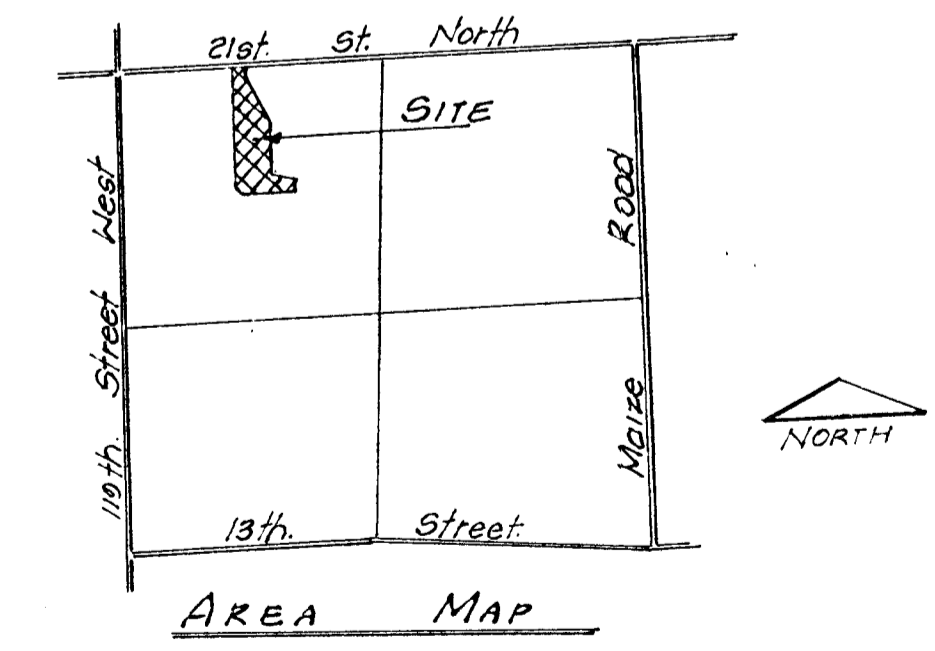
Owner: INLAND INVESTMENT Co. Inc.
10300 W. Central
Wichita, Ks.

Engineer: P.E.C. p.a.
1440 English
Wichita, Ks.



SCALE: 1" = 100'
o = IRON SET
B.M. - CHIS 10' NE COR HEADWALL
120' W OF INTERSECTION 21ST ST &
MAIZE RD. ELEV = 1351.065 M.S.L.
Aug. 30th 1985

Notes: Prop. 20 ft. Bldg.
Setback where shown.
Prop. 20 ft. back to back
Paving in all of Parkridge
Courts



NW Cor. NW 1/4 Sec. 7
T27S, R1W, of the 6th P.M.

SWS-212
13-12-SWI
12-12-SWI

12" Water Main
(City of Wichita)

KG&E Aerial Power Line

ECHO Hills 2nd Add.
"A" Zoning

ECHO Hills 2nd Add.
"A" Zoning