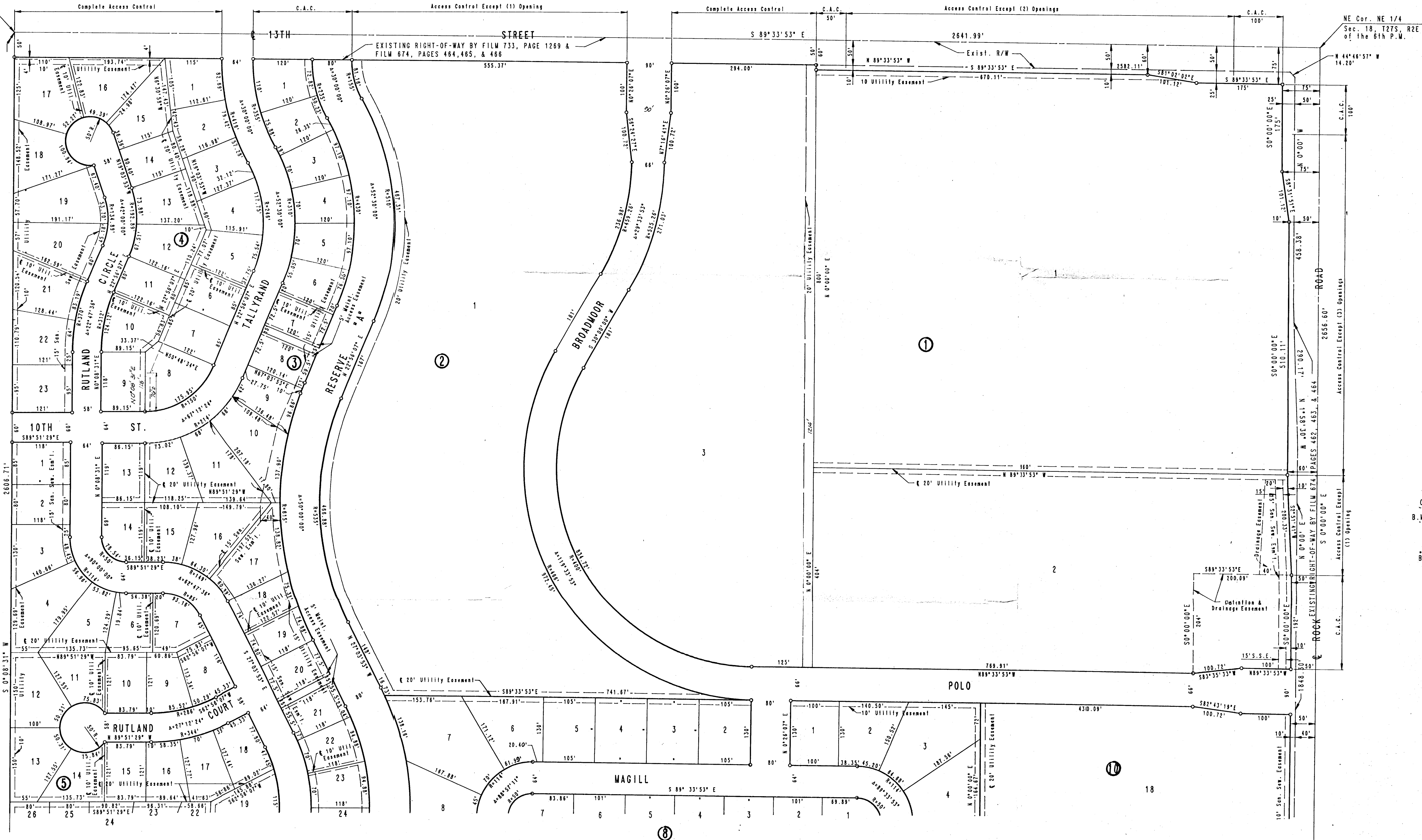


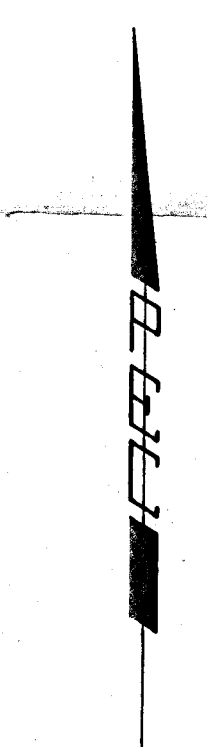
FAIRFIELD ESTATES

WICHITA, SEDGWICK COUNTY, KANSAS

NW Cor. NE 1/4
Sec. 18, T27S, R2E
of the 6th P.M.



NE Cor. NE 1/4
Sec. 18, T27S, R2E
of the 6th P.M.



SCALE: 1" = 100'

○ = IRON SET
 C.A.C. = COMPLETE ACCESS CONTROL
 B.M. - CHIS. "O" S. END CURB RETURN
 WEST SIDE ROCK ROAD AT E. 1/4 COR.
 SEC. 18, T27S, R2E.
 ELEV. 179.18 CITY DATUM
 BUILDING SETBACKS - SEE SHEET NO. 2