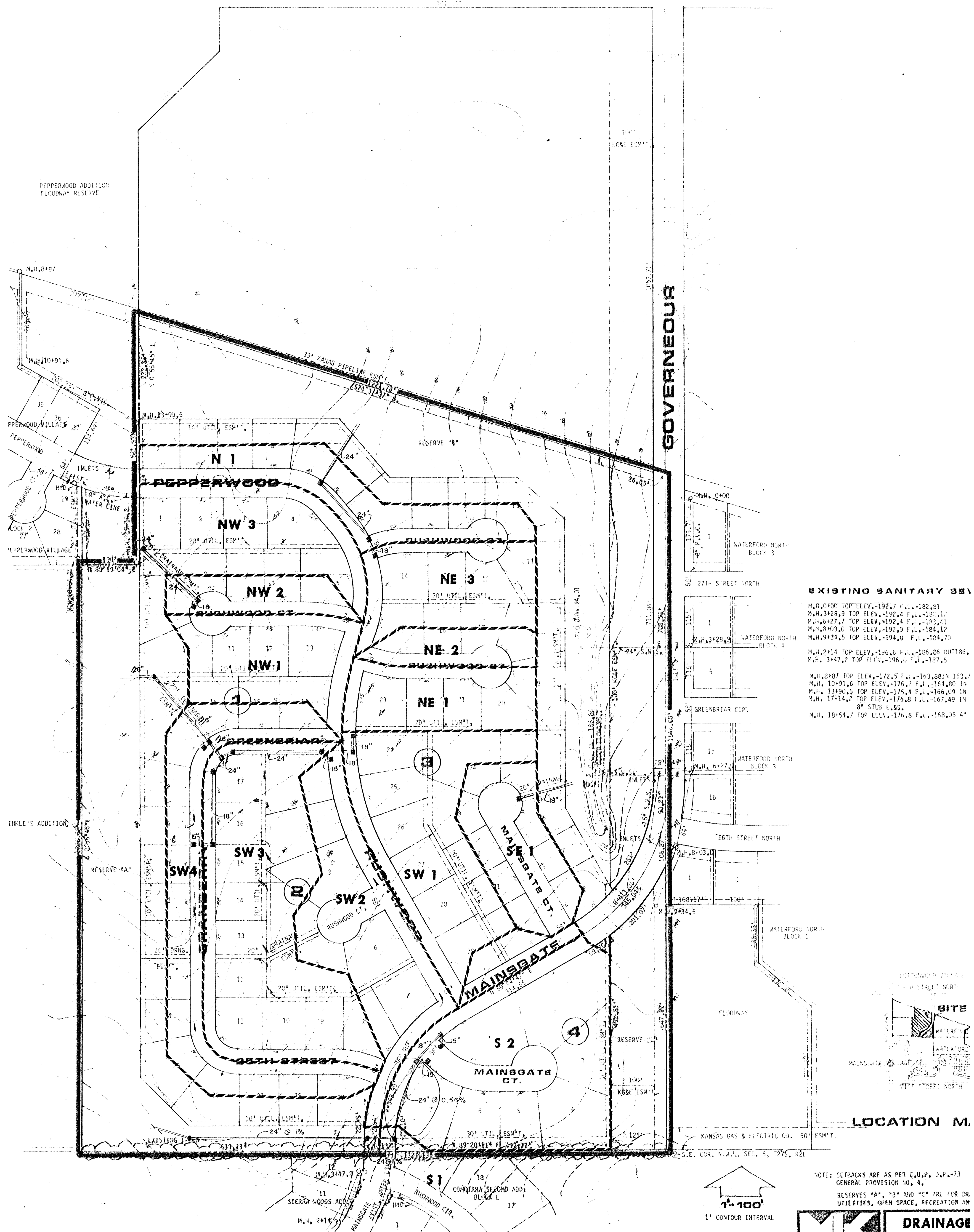
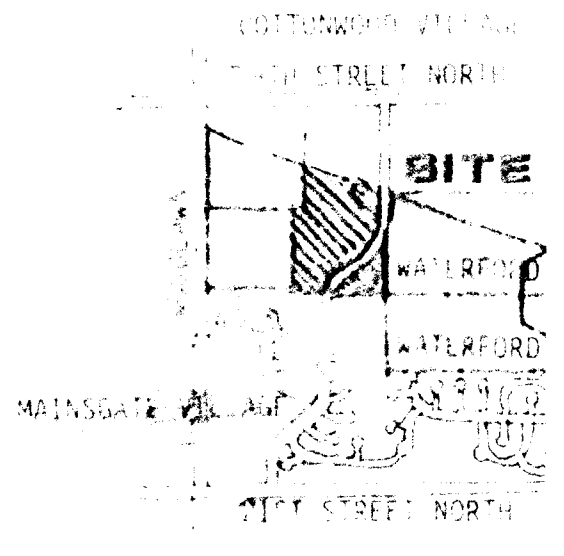


29TH STREET NORTH



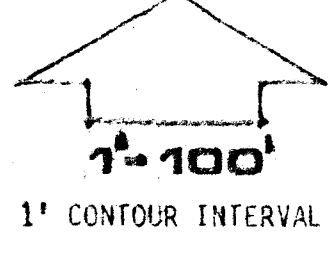
EXISTING SANITARY SEW

M.H. 0+00	TOP ELEV. -192.7 F.L. -182.81
M.H. 3+28.9	TOP ELEV. -192.4 F.L. -182.17
M.H. 6+27.7	TOP ELEV. -192.4 F.L. -182.41
M.H. 8+03.0	TOP ELEV. -192.9 F.L. -184.17
M.H. 9+31.5	TOP ELEV. -194.0 F.L. -184.70
M.H. 2+14	TOP ELEV. -196.6 F.L. -186.86 OUT186.4
M.H. 3+47.2	TOP ELEV. -196.0 F.L. -187.5
M.H. 8+07	TOP ELEV. -172.5 F.L. -163.81 IN 163.7
M.H. 10+01.6	TOP ELEV. -176.2 F.L. -164.80 IN
M.H. 13+90.5	TOP ELEV. -175.4 F.L. -166.09 IN
M.H. 17+14.2	TOP ELEV. -176.8 F.L. -167.49 IN
8" STUB 1.65	
M.H. 18+54.7	TOP ELEV. -170.8 F.L. -168.05 4"




LOCATION M.

NOTE: SETBACKS ARE AS PER C.O.P. D.P. 73
GENERAL PROVISION NO. 4.
RESERVES "A", "B" AND "C" ARE FOR DR.
UTILITIES, OPEN SPACE, RECREATION AND



WATERFORD NORTH THIRD ADDITION

OWNER: MICHELTA DEVELOPMENT COMPANY, 2800 N. ROCK ROAD, #100, WICHITA, KS 67226



DRAINAGE FOR WATERFORD THIRD ADDITION

MID-KANSAS ENGINEERING CONSULTANTS
240 NORTH ROCK ROAD
SUITE 100
WICHITA, KANSAS 67206