

September 10, 1976

Mr. Joel M. Pollack  
Bill Bachman & Associates, Inc.  
1901 West 13th Street  
Wichita, Kansas

RE: Washington Square Drainage Requirements

Dear Mr. Pollack:

The Engineering Division has completed the drainage study in connection with the above-mentioned plat. Listed below are the comments and requirements for the necessary drainage improvements:

1. A 48-inch diameter pipe must be installed under the Interstate @ elevation 74.35<sup>±</sup> (upstream flowline). Provisions must be made for an outfall system between this pipe and the Big Slough.
2. A storm water sewer is proposed to be located in 46th Street South. A 20' storm sewer easement will be required on Lots 4, 5, and 6 adjacent to the utility easement. A temporary easement will be necessary on Lots 4, 5, and 6. This will prohibit building construction on these lots until after the storm sewer pipe is installed across these lots.
3. Two of the cul-de-sacs must drain to the Interstate right-of-way via pipes in drainage easements. The other cul-de-sacs can be graded to drain into Washington Avenue.
4. Approval of drainage into the Interstate right-of-way must be obtained from the Kansas Department of Transportation.
5. The minimum pad elevation for this plat is 85.0 (City datum).

If additional information is necessary, please contact me.

Very truly yours,

Dean Sellers  
Assistant City Engineer

DS:an  
cc: Curtis Newby  
M.S. Mitchell  
Bob Feldner

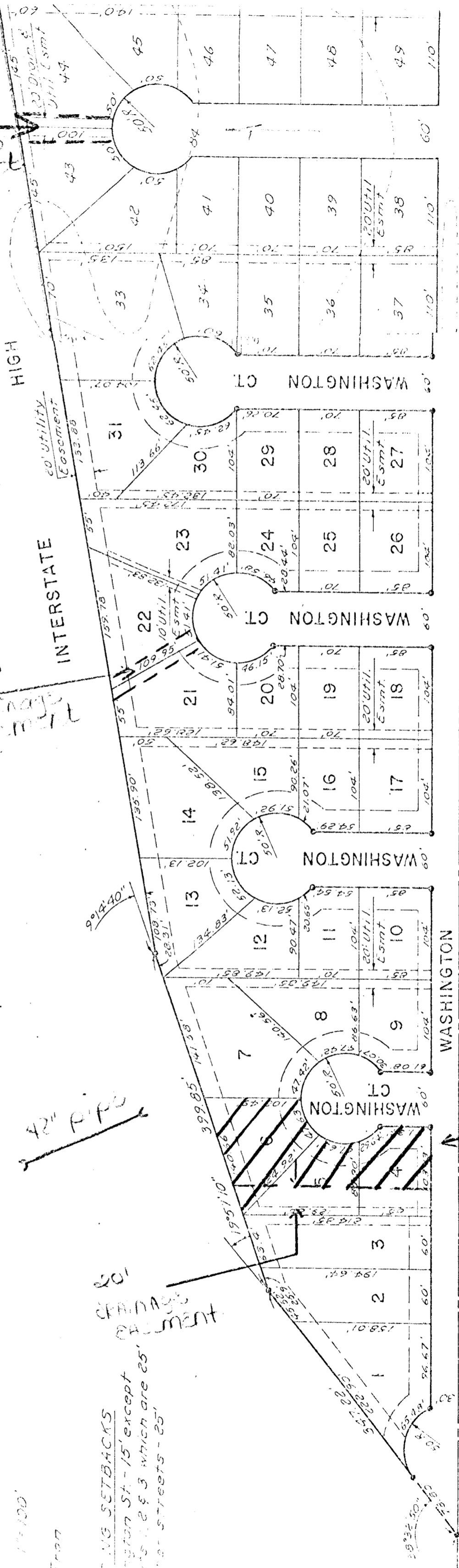
NO. 2351 A-T  
drainage easement

drainage easement

42" PIPE

drainage easement

temporary  
constr.  
easement



This plot of "WASHINGTON SQUARE ADDITION,"  
Wichita, Kansas, has been submitted to and approved  
by the Wichita-Sedgwick County Metropolitan Planning  
Commission.

W.C. McLaughlin Company,  
County and state do hereby  
surveyed and platted "WASH-

60	60
ADD	60