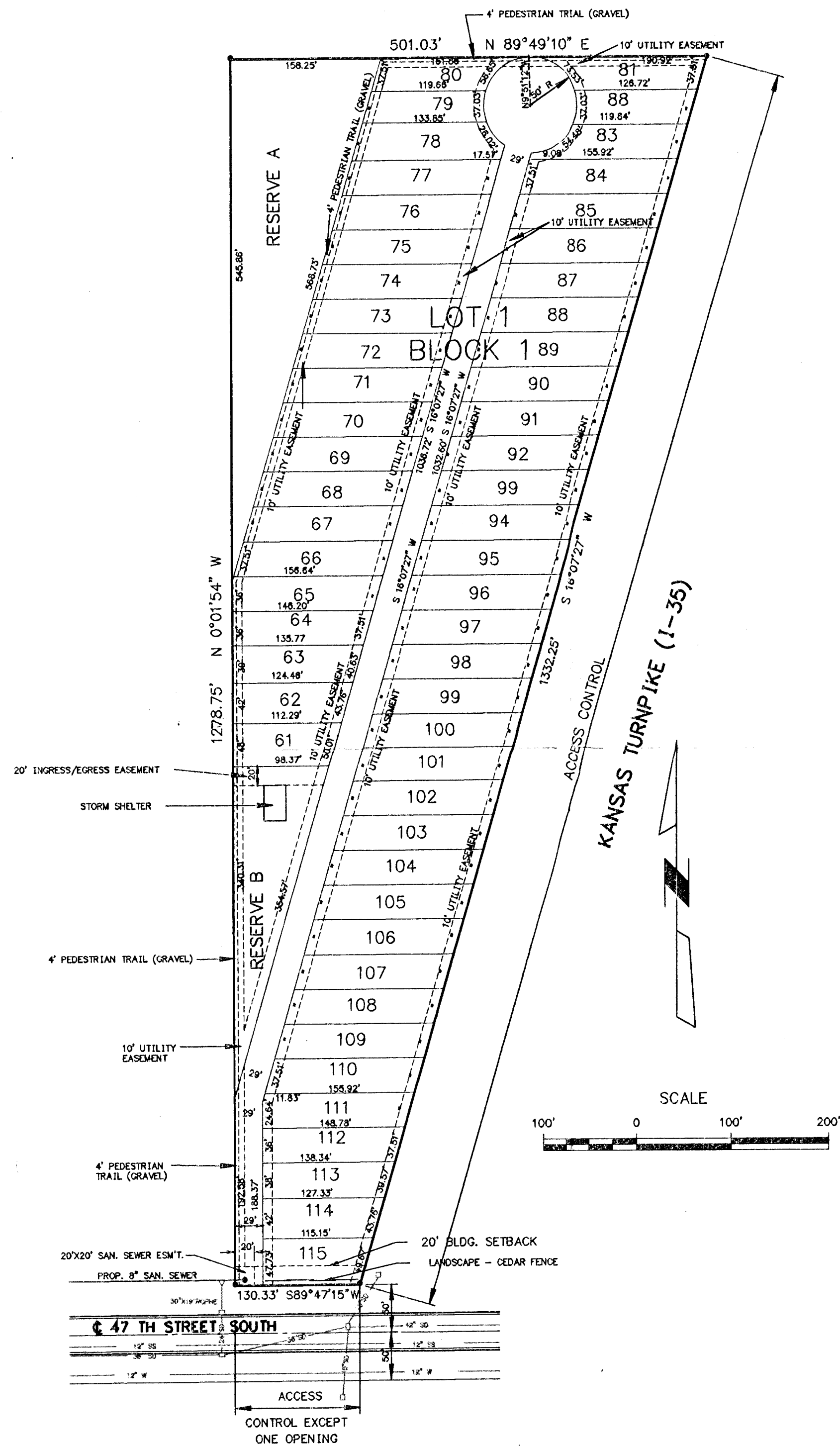


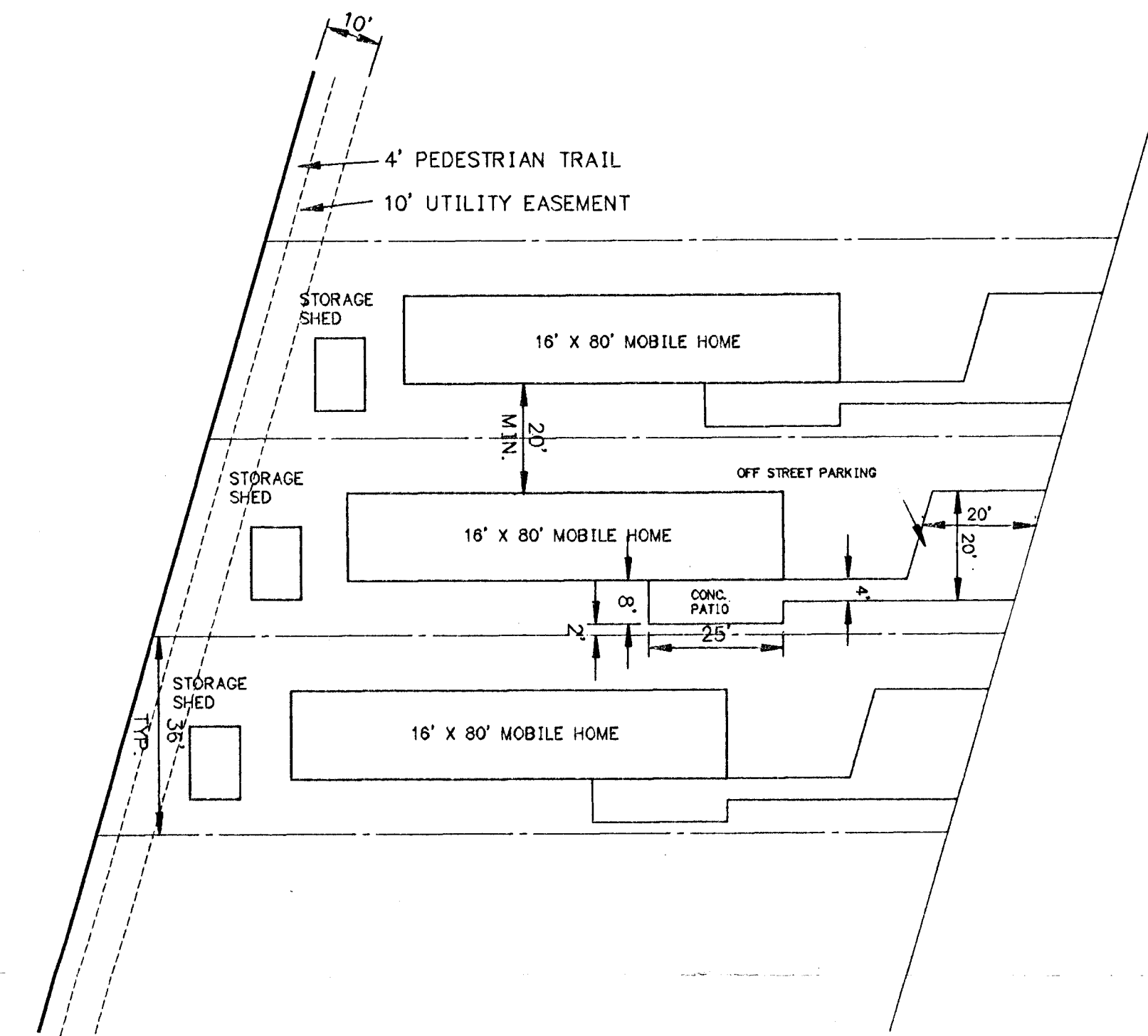
Preliminary Site Development Plan

SHERWOOD ACRES MOBILE HOME PARK

PHASE 2

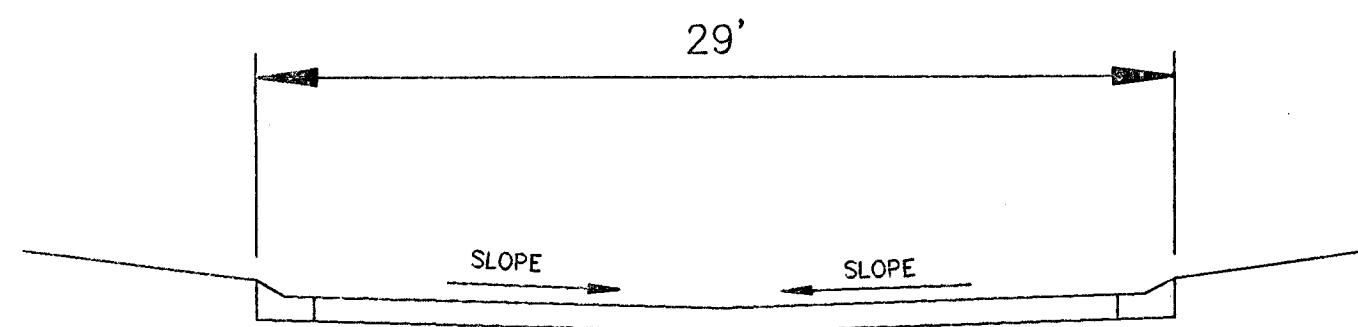


MOBILE HOME PARK LAYOUT



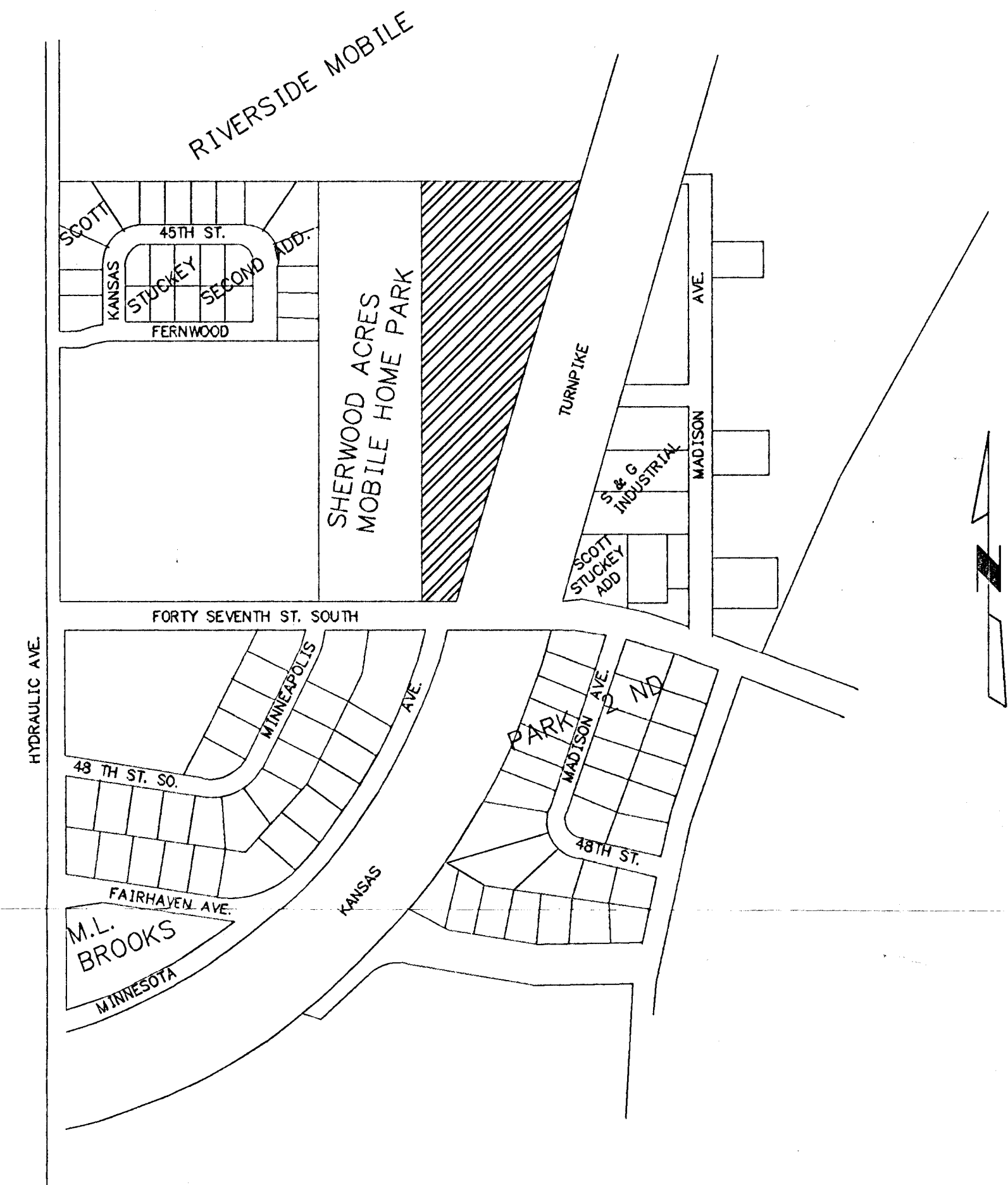
TYPICAL LOT LAYOUT

N.T.S.



TYPICAL ROAD SECTION

N.T.S.



LOCATION MAP

N.T.S.

PROJECT DATA

Minimum Lot Size: 5,000 SF
 Total number of lots: 55
 Total land area: 403,656 SF or 9.267 Ac.
 Total Recreational Area
 Reserve "A" = 16,689 SF or 0.383 Ac.
 Reserve "B" = 43,191 SF or 0.992 Ac.
 Proposed Zoning Classification is "G"

GENERAL NOTES

Parking will be prohibited on all interior roadways. The Park Manager will be responsible for posting and enforcing the parking restrictions.