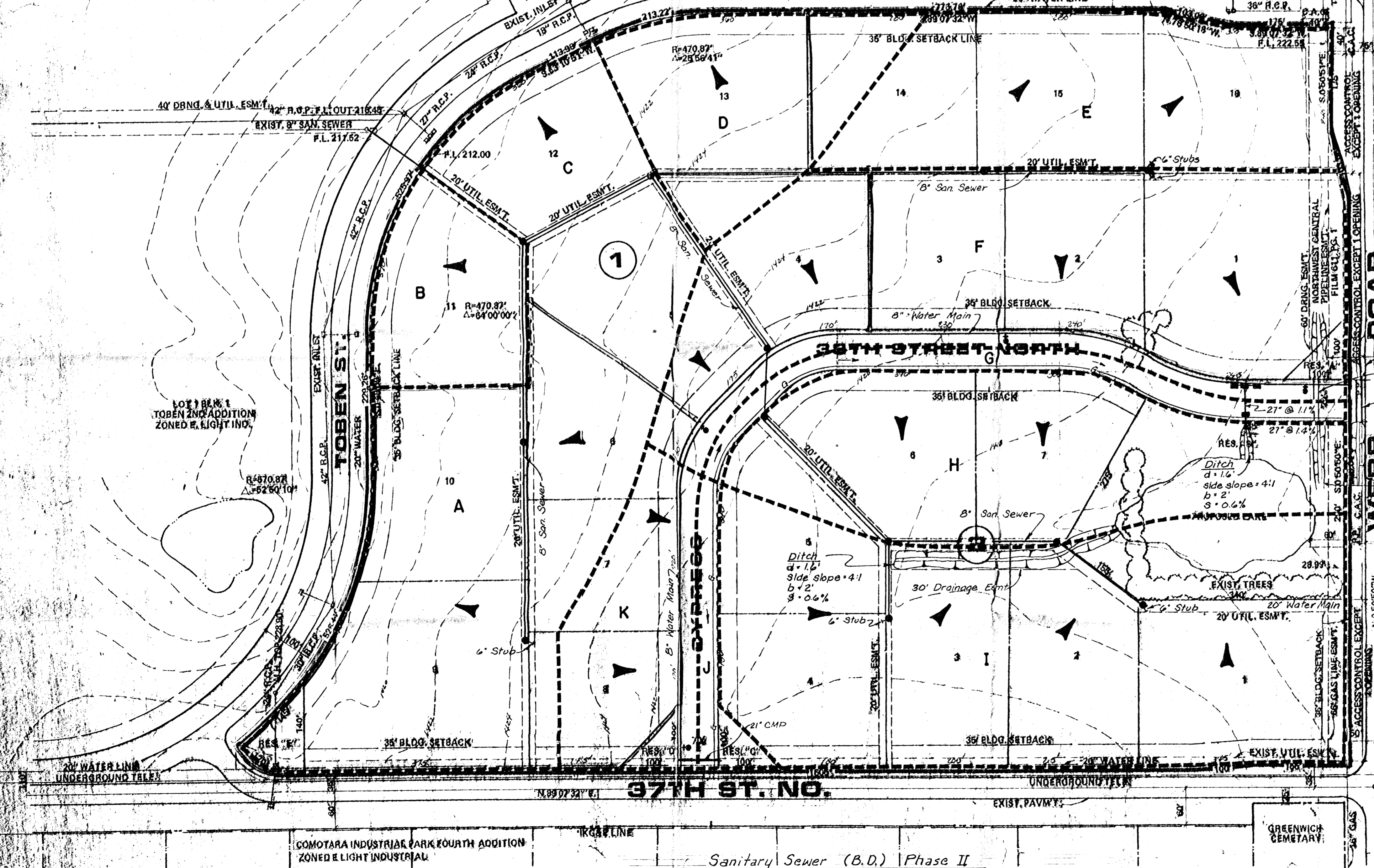


INDUSTRIAL AIR CENTER	AREA	AREA ACCUM.	C	T <sub>c</sub>	T <sub>s</sub>	I <sub>100</sub>	Q <sub>5</sub>	Q <sub>100</sub>	PIPE SIZE	PIPE SLOPE	INLETS
A	6.62		0.7	15	5.21	8.98	24.1	41.6			
B	1.76	8.38	0.7	15	5.21	8.98	6.4	11.1			
C	3.17		0.7	15	5.21	8.98	11.6	19.9			
D	2.90	14.45	0.7	15	5.21	8.98	10.6	18.2			
E	4.75		0.7	15	5.21	8.98	17.3	29.9			
F	8.42		0.7	15	5.21	8.98	30.7	52.9	27"	1.10%	3-L <sub>1</sub> =10'
G	0.95	9.37	0.95	15	5.21	8.98	4.7	8.1			
H	5.31		0.73	15	5.21	8.98	35.6	61.4	27"	1.40%	L <sub>1</sub> =5'
I	9.58		0.7	15	5.21	8.98	19.4	33.4			
J	14.89		0.7	15	5.21	8.98	54.3	93.6			
K	24.29		0.71	17	4.97	8.55	85.7	147.5			
	0.52		0.95	15	5.21	8.98	2.6	4.4			
	2.32		0.7	15	5.21	8.98	8.5	14.6			
Area N. of 39th	2.84		0.75	15	5.21	8.98	11.1	19.1			
	29.93		0.7	27	4.15	7.14	86.9	149.6			



**NOTES:**

- OWNER SHALL GUARANTEE A TEMPORARY 10' DECEL LANE ALONG TOBEN AND 39TH STREET NORTH AND A FUTURE DECEL LANE WHEN STREETS ARE IMPROVED TO 4 LANES ON TOBEN AND 39TH STREET NORTH.
- RESERVES "A" THROUGH "E" ARE FOR UTILITIES, DRAINAGE, LANDSCAPING, IRRIGATION AND ENTRY MONUMENTS.
- RESERVE "B" IN ADDITION TO THE ABOVE IS FOR RECREATIONAL USES AND RELATED STRUCTURES.
- BENCH MARK: CITY STANDARD 32' S. AND 11' E. OF S.E. COR. SEC. 29, T26S, R2E. ELEV. 224.64.
- DRAINAGE CONCEPT PLAN TO BE SUBMITTED BY M.K.E.C. TO CITY ENGINEER.
- ALL RESERVES TO BE OWNED AND MAINTAINED BY LOT OWNERS ASSOCIATION.
- FOR LOTS 9 THROUGH 10, BLOCK 1, THERE SHALL BE ACCESS CONTROL EXCEPT FOR 2 OPENINGS ON EACH LOT ALONG TOBEN AND 39TH STREET NORTH ONLY.

Reshape 100' of Exist. Ditch  
 2-19"x30" HERCP @ 0.30%  
 2-19"x30" HERCP @ 0.40%

COLONEL JAMES JABARA AIRPORT ADD.  
 LOT 1 BLOCK A  
 ZONED E LIGHT IND.

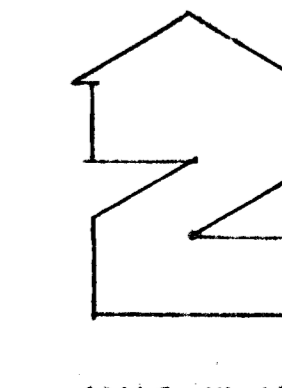
Reshape 100' of Exist. Ditch

EXIST. 4' X 3' X 63" C.M.P.A.  
 P.I. 219.43

Note:  
 Add 1-53"x34"x53" HERCP or  
 Replace Exist. C.M.P.A. with  
 1-8'x3' RCBC to handle  
 additional flow.

DRAINAGE CONCEPT  
AND UTILITY LAYOUT

# INDUSTRIAL AIR CENTER



**Project** TOBEN ADDITION

**sheet title** PRELIMINARY PLAN

**date** OCT. 10, 1985

**rev.**

**OWNER:** HORST K. MILLER, 630 N. WASHINGTON, WICHITA, KS 67214 316-264-8022

**WICHITA AIRPORT AUTHORITY, 466 N. MAIN E. LIGHT INDUSTRIAL**

**GREENWICH CEMETARY**

**Sanitary Sewer (B.D.) Phase II**

**Bill G. Yung Design**  
 8225 E. 35TH ST. NORTH, WICHITA, KS. 67226  
 316-883-5567