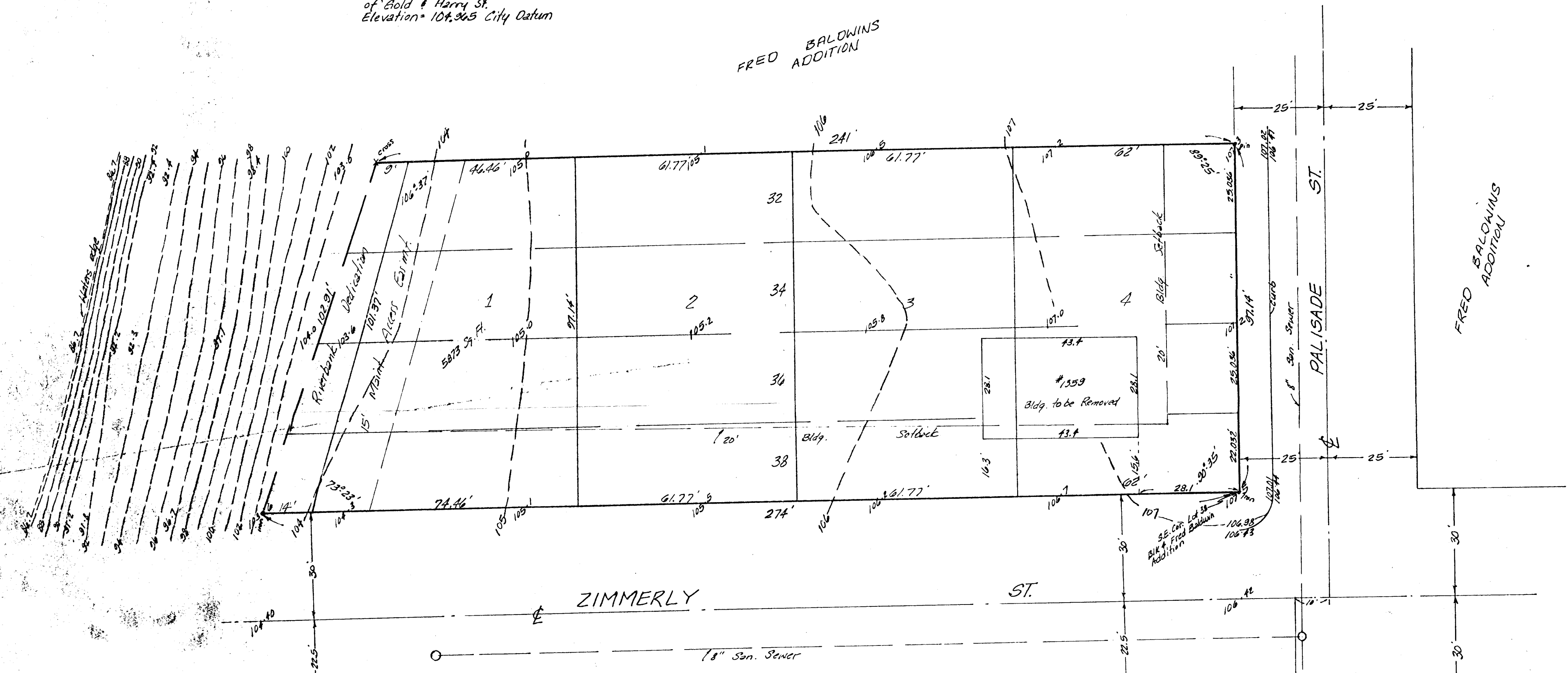


Bench mark:
City bench mark disc, 6 ft. west
and 10 ft. south of S.E. corner
of Gold & Harry St.
Elevation = 104.305 City Datum



SKETCH PLAT
PATTON ADDITION
DUANE PATTON

Note:
Bench mark set on
"M" of M.P.C. on
Fire Hydrant at
S.E. Cor. of intersection
Elev. = 109.48 City Datum