

5 4 3 2 1

D
C
B
A

D
C
B
A

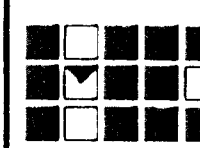
PROPERTY DESCRIPTION:

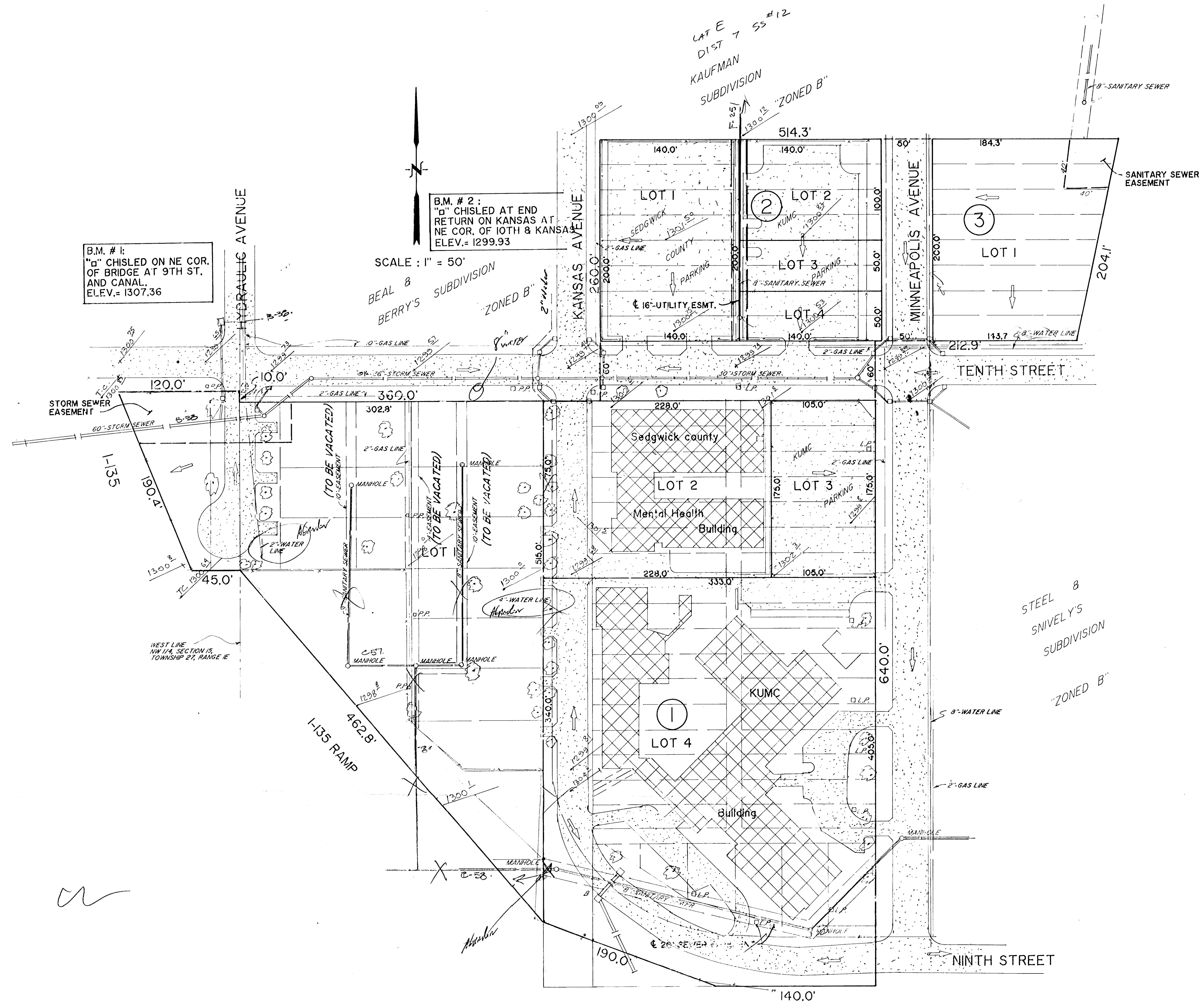
Beginning at the Southwest corner of Lot 7, on Kansas Avenue, Beals and Berry's Subdivision to Wichita, Sedgwick County, Kansas; Thence East along the south line of said Lot 7, 514.3 Feet to the Southeast corner of Lot 7, Minneapolis Avenue, said Beals and Berry's Subdivision; Thence Southwesterly 204.1 Feet to a point on the North right-of-way line of Tenth Street, said point being 143.7 Feet east of Northeast corner of Tenth Street and Minneapolis Avenue; Thence West along said North right-of-way line, 212.9 Feet; Thence South along the West right-of-way line of Minneapolis Avenue, 640.0 Feet to a point on the North right-of-way line of Ninth Street; Thence West along said North right-of-way line, 140.0 Feet; Thence Northwesterly, 190.0 Feet; Thence Northwesterly 462.8 Feet to a point on the West Line of Northwest Quarter, Section 15, Township 27 South, Range 1 East of the 6th P.M.; Thence West 45.0 Feet; Thence Northwesterly 190.4 Feet to a point on the South right-of-way line of Tenth Street, said point being 120 Feet West of West Line of Northwest Quarter of Said Section 15; Thence East 120.0 Feet; Thence South 10.0 Feet to a point on the extended South right-of-way line of Tenth Street; Thence East along said South right-of-way line 360.0 Feet to a point on the extended East right-of-way line of Kansas Avenue; Thence North along said East right-of-way line, 260.0 Feet to the point of beginning.

(NOTE: THIS PROPERTY DESCRIPTION WILL BE REVISED UPON COMPLETION OF FIELD SURVEY AND FINAL PLAT.)

TOTAL AREA OF PLAT = 10 ACRES
 TOTAL NUMBER OF LOTS = 9
 NAME OF SUBDIVIDER: Tim Thimesch, Director
 Facilities Management
 The University of Kansas
 School of Medicine - Wichita
 1010 - North Kansas
 Wichita, Kansas 67214

Revisions			
Symbol	Descriptions	Date	Approved

 MUNICIPAL ENGINEERS Civil Engineers & Land Surveyors 254 Laura, Suite 201 Wichita, Kansas 67211	PRELIMINARY PLAT KUMC FIRST ADDITION WICHITA, KANSAS		
			Designed by: B.K.
Drawn by: M.W.	Submitted by: B.K.	Sheet number: 1	Dwg. No.: 90-36-01



B.M. # 1:
 "d" CHISLED ON NE COR.
 OF BRIDGE AT 9TH ST.
 AND CANAL.
 ELEV. = 1307.36

B.M. # 2:
 "d" CHISLED AT END
 RETURN ON KANSAS AT
 NE COR. OF 10TH & KANSAS
 ELEV. = 1299.93

SCALE: 1" = 50'

BEALS &
 BERRY'S SUBDIVISION
 "ZONED B"

CAFÉ
 DIST 7 55#12
 KAUFMAN
 SUBDIVISION
 "ZONED B"

STEEL &
 SNIVELY'S
 SUBDIVISION
 "ZONED B"

Handwritten initials

5 4 3 2 1

↑