

SKETCH PLAT KENSINGTON GARDENS

SEDGWICK COUNTY, KANSAS

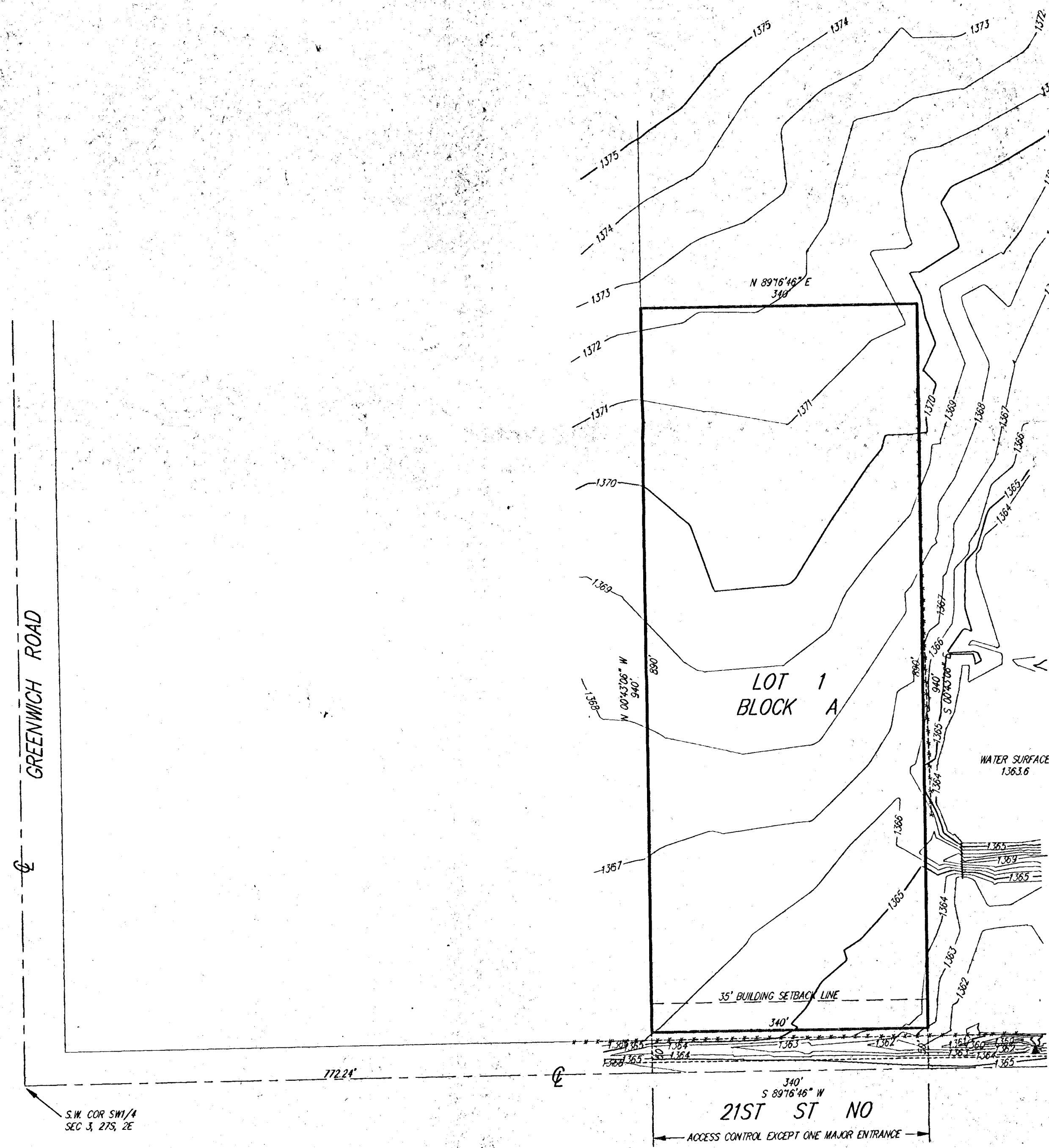
That part of the SW1/4 of Sec. 3, Twp. 27-S, R-2-E of the 6th P.M., Sedgwick County, Kansas, described as beginning at a point on the south line of said SW1/4, 772.24 feet east of the S.W. Corner thereof; thence north, parallel with the west line of said SW1/4, 940 feet; thence east, parallel with the south line of said SW1/4, 340 feet; thence south, parallel with the west line of said SW1/4, 940 feet to the south line of said SW1/4; thence west, along the south line of said SW1/4, 340 feet to the point of beginning.

GROSS SIZE
319,600.03 SQ FT ±
7.337 ACRES ±

NET SIZE
302,600.03 SQ FT ±
6.947 ACRES ±

KENSINGTON GARDENS, L.L.C.,
a Kansas limited Liability Company
BILL COZINE
1147 S. BROADWAY
WICHITA, KS 67211

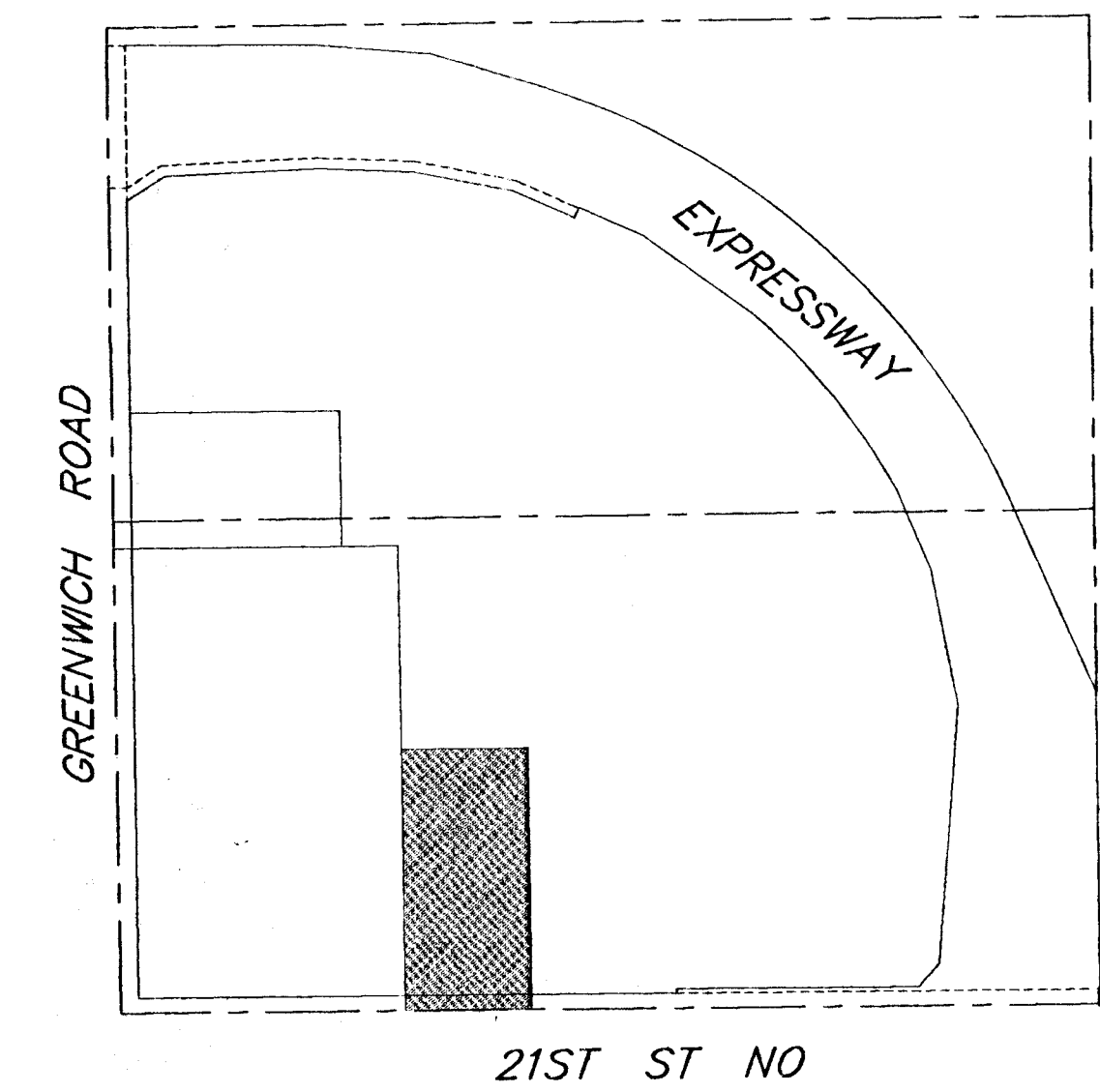
PH (316) 262-3435



SRB

1" = 100'
ELEV = MSL

BENCH MARK:
60d NAIL IN HLP 100' S & 50' E
OF S.W. COR SW1/4 3-27S-2E
(21ST ST NO & GREENWICH)
ELEVATION = 1365.33 MSL



VICINITY PLAT
SW1/4 SEC 3, 27S, 2E