

PRELIMINARY PLAT KENSINGTON GARDENS

SEDGWICK COUNTY, KANSAS

LEGAL DESCRIPTION:

Part of the SW1/4 of Sec. 3, Twp. 27-S, R-2-E of the 6th P.M. Sedgwick County, Kansas.

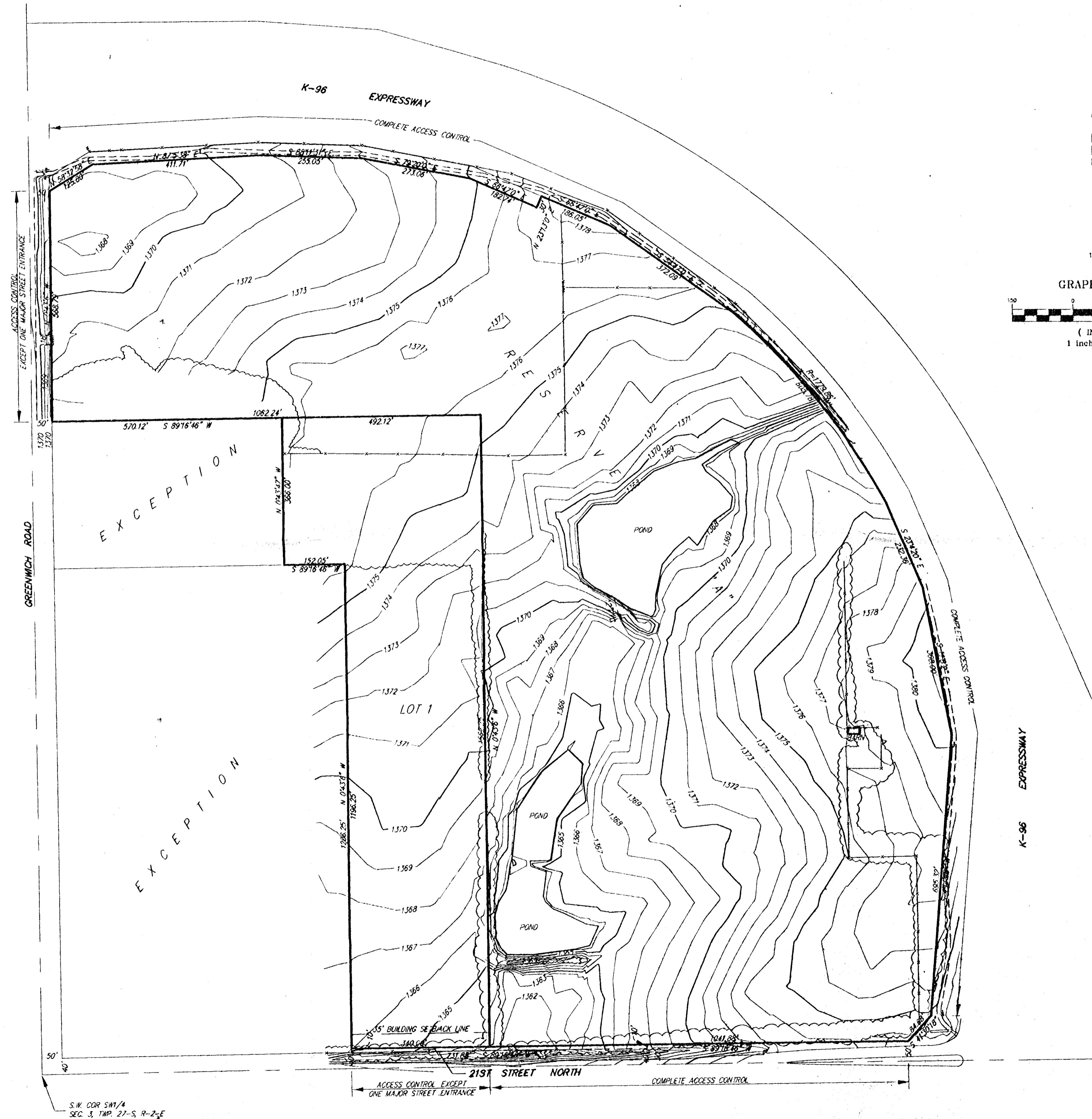
KENSINGTON GARDENS, L.L.C.,
a Kansas limited Liability Company
BILL COZINE
1147 S. BROADWAY
WICHITA, KS 67211

PH (316) 262-3435

GROSS SIZE:
3,264,282.33 Sq. Ft. ±
74.94 Acres ±

NET SIZE LOT 1:
586,827.03 Sq. Ft. ±
13.47 Acres ±

NET SIZE RESERVE "A":
2,670,136.47 Sq. Ft. ±
61.30 Acres ±



S.W. COR SW1/4
SEC. 3, TWP. 27-S, R-2-E