

HOOD AVE.  
 PIPPIN'S ADDITION  
 ABRAHAM ADDITION

WARENFELT ADD.

ACCESS CONTROL EXCEPT FOR ONE OPENING PER LOT

29TH ST. NO.

CORNWELL ADD.  
 LAVIN DR.  
 LITTLE ARKANSAS RIVER

FELLERS ADD.

TOEPKE ADD.

SALINA CT. ACRES  
 MILEEN SECOND ADD.

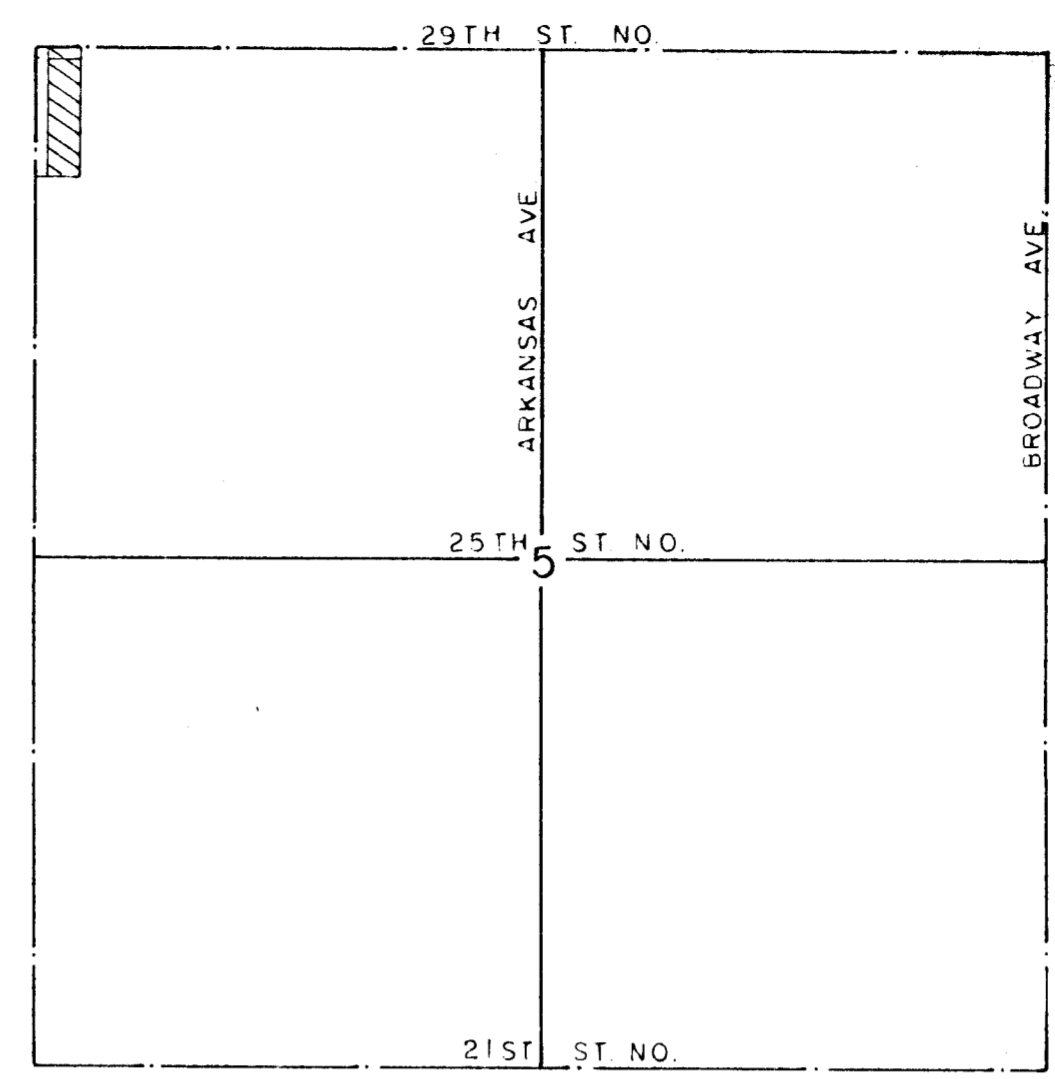
MILEEN ACRES  
 SALINA AVE.

APPROXIMATE HIGH BANK OF RIVER

B.M. ELEV 1317.51 - STANDARD DISC AT THE NE COR. OF BRIDGE LOCATED AT 29TH ST. NO. & LITTLE ARKANSAS RIVER



1" = 100'



VICINITY MAP  
 1" = 1000'

MIN BLDG PAD = ELEV 1310.0

SKETCH PLAT  
 RIVERVIEW ESTATES

FOR: MIKE BOYD

TOPO MADE OCTOBER 27, 1981

LOWELL D. HIGH  
 SEPTEMBER 11, 1986