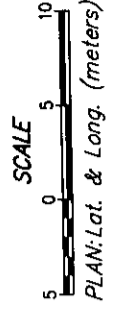
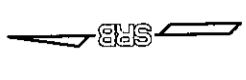


PRVA REGION NO.	7
STATE	KANSAS
PROJECT NUMBER	87H-0185-01
FISCAL YEAR	2001
SHEET NUMBER	9
TOTAL SHEETS	127

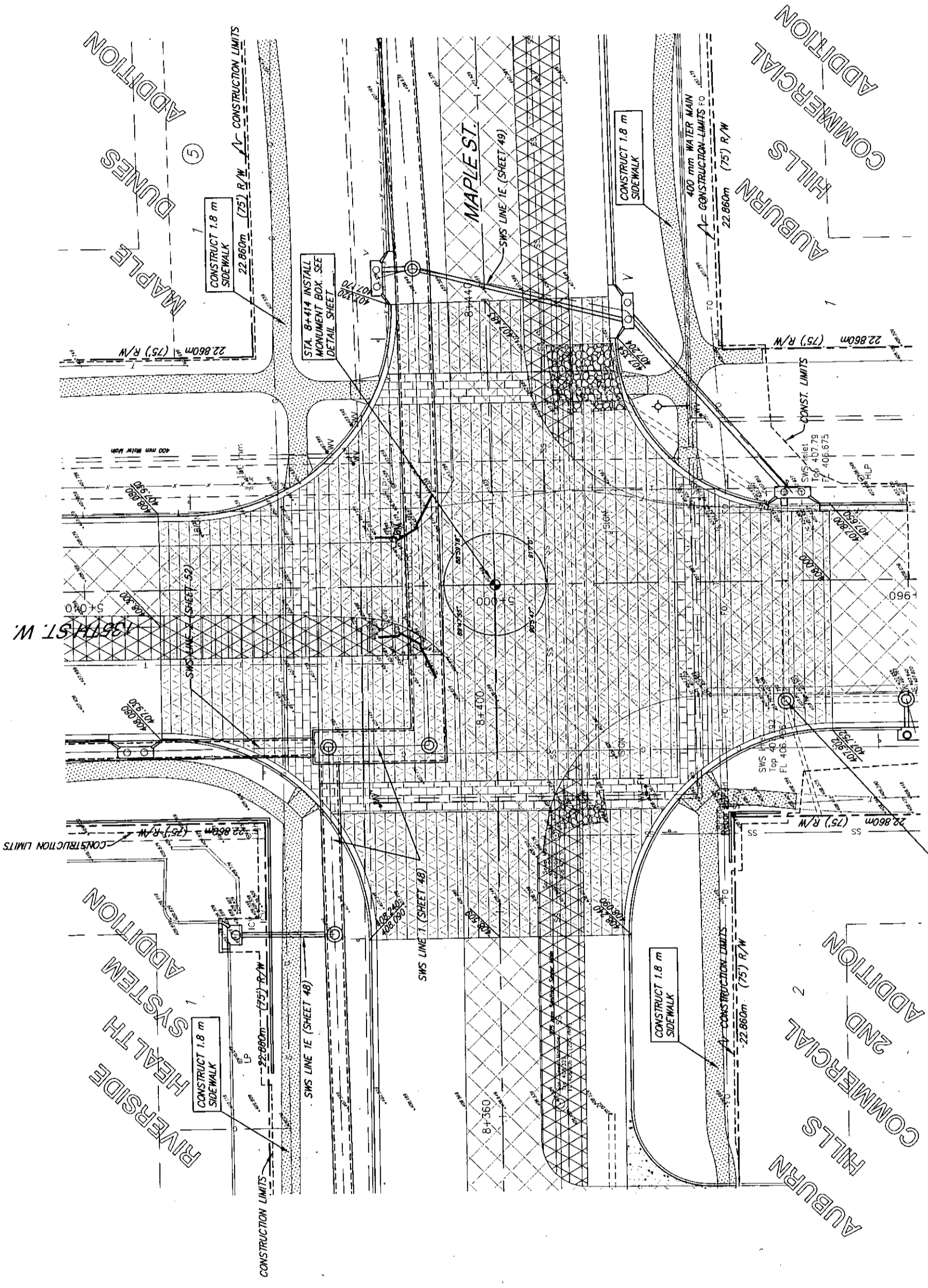


SEE INTERSECTION
JOINT PLAN FOR
GRADES. (SHEET NO.)

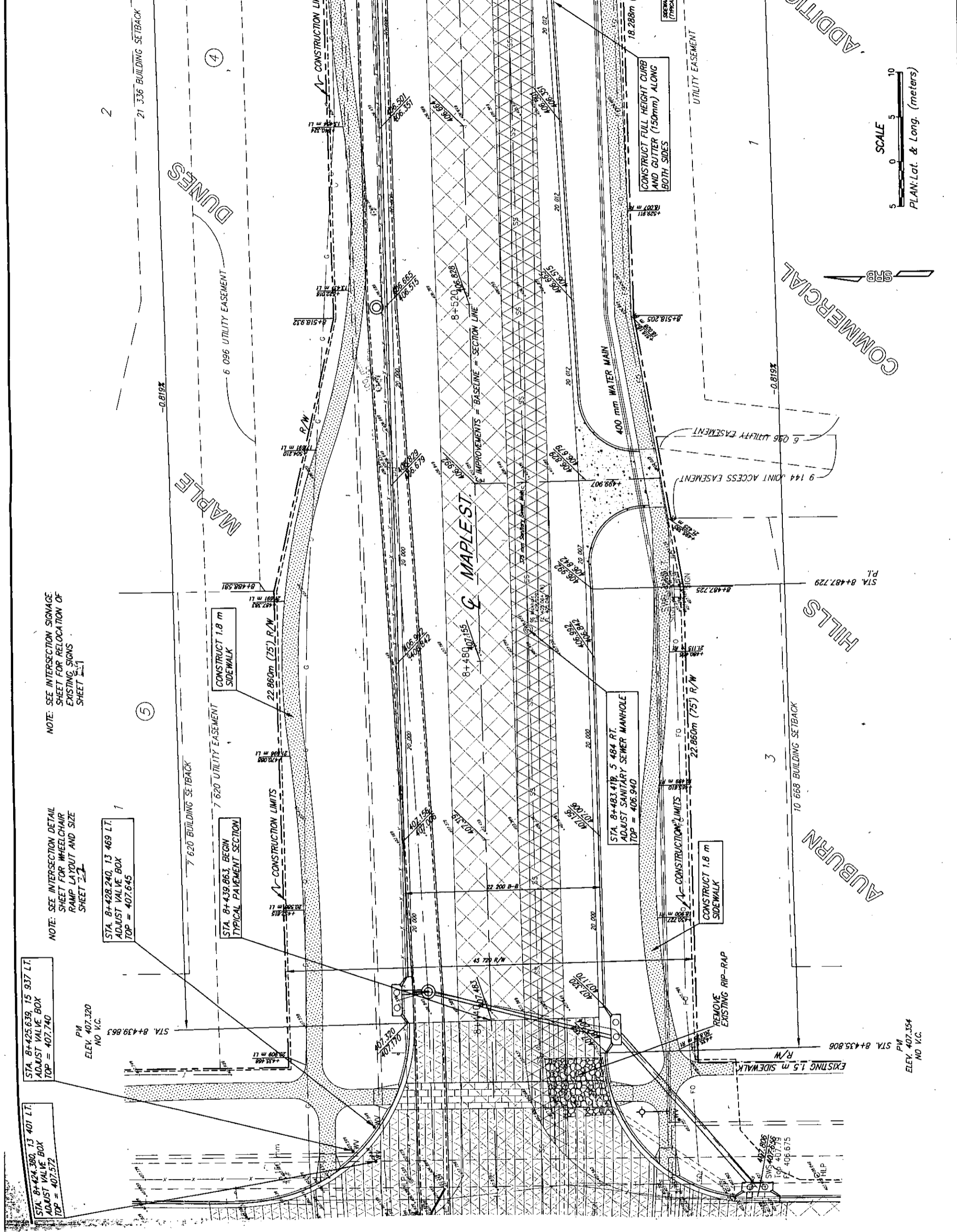
MAPLE IMPROVEMENTS - 135TH ST. W. TO 119TH ST. W.
PAVING PLANS STA 8+377.172 TO 8+435.806

SRB
SAYOY, RUCOLES & BOHM, P. A.
ENGINEERING & SURVEYING
472-76-245-83262-000-000-001

127



FHWA REGION NO.	7	KANSAS	PROJECT NUMBER	87N-0195-01	FISCAL YEAR	2001	SHEET NUMBER	10	TOTAL SHEETS	127
-----------------	---	--------	----------------	-------------	-------------	------	--------------	----	--------------	-----



NOTE: SEE INTERSECTION SIGNAGE SHEET FOR RELOCATION OF EXISTING SIGNS SHEET 22.1

NOTE: SEE INTERSECTION DETAIL SHEET FOR WHEELCHAIR RAMP LAYOUT AND SIZE SHEET 22.1

STA. 8+428.240, 13.469 LT.
ADJUST VALVE BOX
TOP = 407.645

PM
ELEV. 407.320
NO V.C.

STA. 8+425.639, 15.937 LT.
ADJUST VALVE BOX
TOP = 407.740

STA. 8+439.663, BEGIN
TYPICAL PAVEMENT SECTION

CONSTRUCT 1.8 m
SIDEWALK

STA. 8+483.419, 5.484 RT.
ADJUST SANITARY SEWER MANHOLE
TOP = 406.940

CONSTRUCT 1.8 m
SIDEWALK

REMOVE
EXISTING RIP-RAP

EXISTING 1.5 m SIDEWALK
R/W

PM
STA. 8+435.806
ELEV. 407.354
NO V.C.

SCALE
5 0 5 10
PLAN: Lat. & Long. (meters)

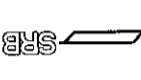
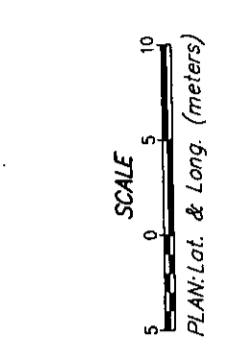
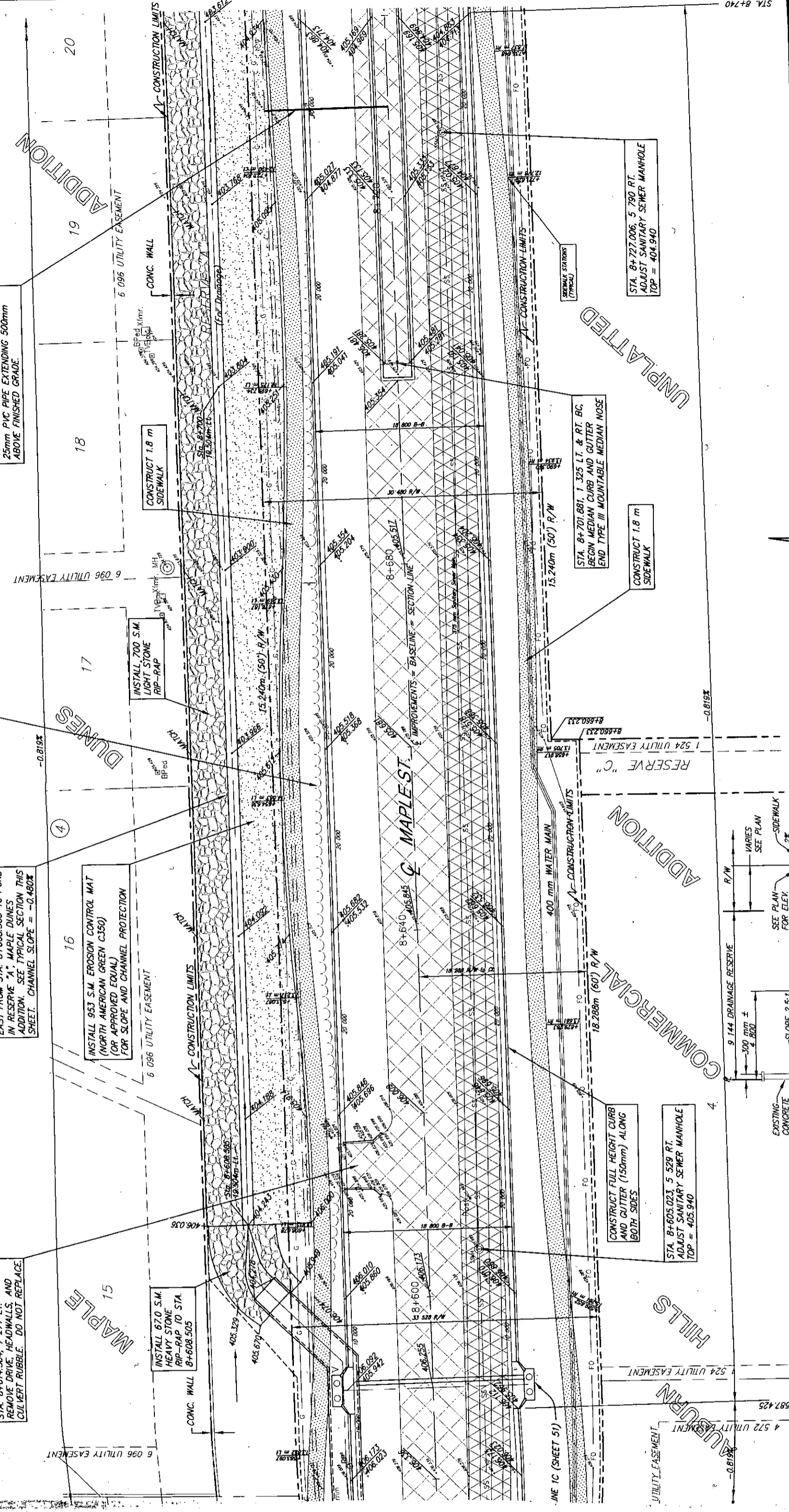
SRB
COMMERCIAL

ADDITION

MAPLE IMPROVEMENTS - 185TH ST. W. TO 119TH ST. W. PAVING PLANS STA 8+435.806 TO 8+580	
SRB	SAVOY, RUGGLES & BOHM, P.A. ENGINEERING & SURVEYING
472-76-245-83282-000-000-001	10
127	127

FEMA REGION NO.	7	STATE	KANSAS	PROJECT NUMBER	87N-0185-01	SHEET NUMBER	11	TOTAL SHEETS	127
-----------------	---	-------	--------	----------------	-------------	--------------	----	--------------	-----

SRB
SAYOY, RUGGLES & BOHM, P.A.
ENGINEERS & SURVEYORS
422-76-245-63262-000-000-001
1/27



SCALE
5 0 5 10
PLAN: Lat. & Long. (meters)

STA. 8+740
MAPLE IMPROVEMENTS - 135TH ST. W. TO 119TH ST. W.
PAVING PLANS STA 8+580 TO 8+740

STA. 8+727.006, 5 790 RT.
ADJUST SANITARY SEWER MANHOLE
TOP = 404.940

STA. 8+701.881, 1.325 LT. & RT. BC.
BEGIN MEDIAN CURB AND GUTTER
END TYPE III MOUNTABLE MEDIAN NOSE

CONSTRUCT 1.8 m
SIDEWALK

STA. 8+605.023, 5 529 RT.
ADJUST SANITARY SEWER MANHOLE
TOP = 405.940

CONSTRUCT FULL HEIGHT CURB
AND GUTTER (150mm) ALONG
BOTH SIDES

INSTALL 670 S.M.
HEAVY STONE
RIP-RAP TO STA.
8+608.505

INSTALL 953 S.M. EROSION CONTROL MAT
(NORTH AMERICAN GREEN C350)
(OR APPROVED EQUAL)
FOR SLOPE AND CHANNEL PROTECTION

REGRADE EXISTING DRAINAGE DITCH
EAST FROM STA. 8+608.505 TO POND
IN RESERVE "A", MAPLE DUNES
ADDITION. SEE TYPICAL SECTION THIS
SHEET. CHANNEL SLOPE = -0.460%

REMOVE TREE ROW FROM APPROX.
STA. 8+600 TO 8+820

STA. 8+730, CL TO 1.3 500 LT. INSTALL
100mm PVC SCH. 40 IRRIGATION
SLEEVE BELOW PAVEMENT SUBGRADE.
100mm CAP ON ENDS & MARK WITH
25mm PVC PIPE EXTENDING 500mm
ABOVE FINISHED GRADE.

STATE	KANSAS
PROJECT NUMBER	87N-0185-01
FISCAL YEAR	2001
SHEET NUMBER	12
TOTAL SHEETS	127

PRJ	404.174
ELEV.	NO V.C.
PM	404.174
ELEV.	NO V.C.

STA.	8+822.296	16 247 LT.
ADJUST VALVE BOX		
TOP =	404.325	

STA.	8+821.897	14 082 LT.
ADJUST VALVE BOX		
TOP =	404.300	

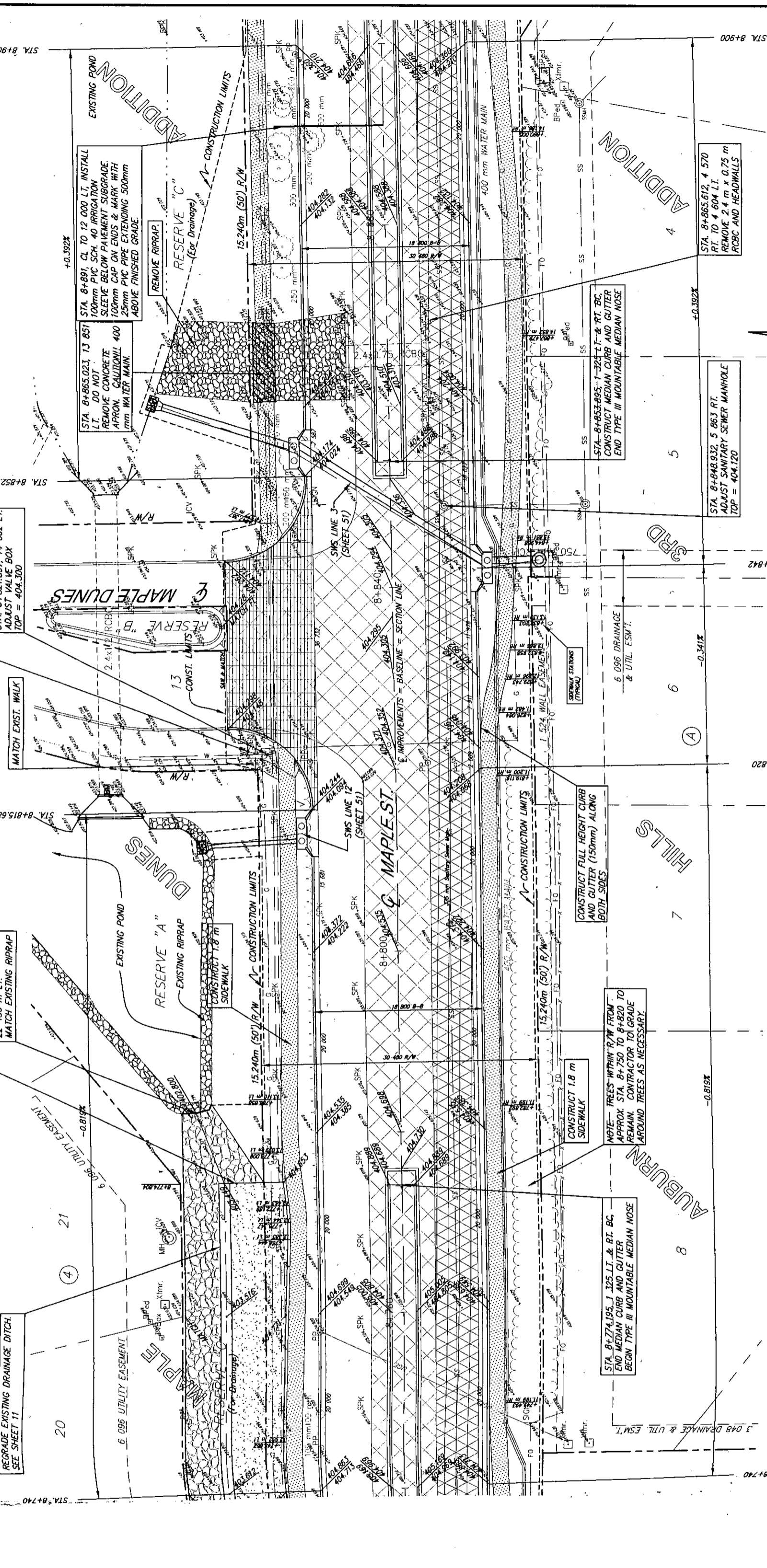
PM	404.244
ELEV.	NO V.C.
NO V.C.	

STA.	8+774.804	19 540 LT.
END CONCRETE FLUME AND EROSION MAT. BEG. FULL-WIDTH LIGHT STONE RIPRAP.		

STA.	8+782.514	22 450 M LT.
MATCH EXISTING RIPRAP		

REGRADE EXISTING DRAINAGE DITCH. SEE SHEET 11

STA.	8+740
------	-------



PRJ	404.133
ELEV.	NO V.C.
PM	404.133
ELEV.	NO V.C.

STA.	8+848.932	5 863 RT.
ADJUST SANITARY SEWER MANHOLE		
TOP =	404.120	

STA.	8+865.612	4 570
RT. TO 4.604 LT.		
REMOVE 2.4 m x 0.75 m RCBC AND HEADWALLS		

STA.	8+848.932	5 863 RT.
ADJUST SANITARY SEWER MANHOLE		
TOP =	404.120	

STA.	8+822.296	16 247 LT.
ADJUST VALVE BOX		
TOP =	404.325	

STA.	8+821.897	14 082 LT.
ADJUST VALVE BOX		
TOP =	404.300	

STA.	8+782.514	22 450 M LT.
MATCH EXISTING RIPRAP		

STA.	8+774.804	19 540 LT.
END CONCRETE FLUME AND EROSION MAT. BEG. FULL-WIDTH LIGHT STONE RIPRAP.		

STA.	8+740
------	-------

PRJ	404.174
ELEV.	NO V.C.
PM	404.174
ELEV.	NO V.C.

STA.	8+900
------	-------

STA.	8+822.296	16 247 LT.
ADJUST VALVE BOX		
TOP =	404.325	

STA.	8+821.897	14 082 LT.
ADJUST VALVE BOX		
TOP =	404.300	

PM	404.244
ELEV.	NO V.C.
NO V.C.	

STA.	8+774.804	19 540 LT.
END CONCRETE FLUME AND EROSION MAT. BEG. FULL-WIDTH LIGHT STONE RIPRAP.		

STA.	8+782.514	22 450 M LT.
MATCH EXISTING RIPRAP		

REGRADE EXISTING DRAINAGE DITCH. SEE SHEET 11

STA.	8+740
------	-------

PRJ	404.133
ELEV.	NO V.C.
PM	404.133
ELEV.	NO V.C.

STA.	8+848.932	5 863 RT.
ADJUST SANITARY SEWER MANHOLE		
TOP =	404.120	

STA.	8+865.612	4 570
RT. TO 4.604 LT.		
REMOVE 2.4 m x 0.75 m RCBC AND HEADWALLS		

STA.	8+848.932	5 863 RT.
ADJUST SANITARY SEWER MANHOLE		
TOP =	404.120	

STA.	8+822.296	16 247 LT.
ADJUST VALVE BOX		
TOP =	404.325	

STA.	8+821.897	14 082 LT.
ADJUST VALVE BOX		
TOP =	404.300	

PM	404.244
ELEV.	NO V.C.
NO V.C.	

STA.	8+774.804	19 540 LT.
END CONCRETE FLUME AND EROSION MAT. BEG. FULL-WIDTH LIGHT STONE RIPRAP.		

STA.	8+782.514	22 450 M LT.
MATCH EXISTING RIPRAP		

REGRADE EXISTING DRAINAGE DITCH. SEE SHEET 11

STA.	8+740
------	-------

PRJ	404.174
ELEV.	NO V.C.
PM	404.174
ELEV.	NO V.C.

STA.	8+900
------	-------

STA.	8+822.296	16 247 LT.
ADJUST VALVE BOX		
TOP =	404.325	

STA.	8+821.897	14 082 LT.
ADJUST VALVE BOX		
TOP =	404.300	

PM	404.244
ELEV.	NO V.C.
NO V.C.	

STA.	8+774.804	19 540 LT.
END CONCRETE FLUME AND EROSION MAT. BEG. FULL-WIDTH LIGHT STONE RIPRAP.		

STA.	8+782.514	22 450 M LT.
MATCH EXISTING RIPRAP		

REGRADE EXISTING DRAINAGE DITCH. SEE SHEET 11

STA.	8+740
------	-------

PRJ	404.133
ELEV.	NO V.C.
PM	404.133
ELEV.	NO V.C.

STA.	8+848.932	5 863 RT.
ADJUST SANITARY SEWER MANHOLE		
TOP =	404.120	

STA.	8+865.612	4 570
RT. TO 4.604 LT.		
REMOVE 2.4 m x 0.75 m RCBC AND HEADWALLS		

STA.	8+848.932	5 863 RT.
ADJUST SANITARY SEWER MANHOLE		
TOP =	404.120	

STA.	8+822.296	16 247 LT.
ADJUST VALVE BOX		
TOP =	404.325	

STA.	8+821.897	14 082 LT.
ADJUST VALVE BOX		
TOP =	404.300	

PM	404.244
ELEV.	NO V.C.
NO V.C.	

STA.	8+774.804	19 540 LT.
END CONCRETE FLUME AND EROSION MAT. BEG. FULL-WIDTH LIGHT STONE RIPRAP.		

STA.	8+782.514	22 450 M LT.
MATCH EXISTING RIPRAP		

REGRADE EXISTING DRAINAGE DITCH. SEE SHEET 11

STA.	8+740
------	-------

PRJ	404.174
ELEV.	NO V.C.
PM	404.174
ELEV.	NO V.C.

STA.	8+900
------	-------

STA.	8+822.296	16 247 LT.
ADJUST VALVE BOX		
TOP =	404.325	

STA.	8+821.897	14 082 LT.
ADJUST VALVE BOX		
TOP =	404.300	

PM	404.244
ELEV.	NO V.C.
NO V.C.	

STA.	8+774.804	19 540 LT.
END CONCRETE FLUME AND EROSION MAT. BEG. FULL-WIDTH LIGHT STONE RIPRAP.		

STA.	8+782.514	22 450 M LT.
MATCH EXISTING RIPRAP		

REGRADE EXISTING DRAINAGE DITCH. SEE SHEET 11

STA.	8+740
------	-------

PRJ	404.133
ELEV.	NO V.C.
PM	404.133
ELEV.	NO V.C.

STA.	8+848.932	5 863 RT.
ADJUST SANITARY SEWER MANHOLE		
TOP =	404.120	

STA.	8+865.612	4 570
RT. TO 4.604 LT.		
REMOVE 2.4 m x 0.75 m RCBC AND HEADWALLS		

STA.	8+848.932	5 863 RT.
ADJUST SANITARY SEWER MANHOLE		
TOP =	404.120	

STA.	8+822.296	16 247 LT.
ADJUST VALVE BOX		
TOP =	404.325	

STA.	8+821.897	14 082 LT.
ADJUST VALVE BOX		
TOP =	404.300	

PM	404.244
ELEV.	NO V.C.
NO V.C.	

STA.	8+774.804	19 540 LT.
END CONCRETE FLUME AND EROSION MAT. BEG. FULL-WIDTH LIGHT STONE RIPRAP.		

STA.	8+782.514	22 450 M LT.
MATCH EXISTING RIPRAP		

REGRADE EXISTING DRAINAGE DITCH. SEE SHEET 11

STA.	8+740
------	-------

PRJ	404.174
ELEV.	NO V.C.
PM	404.174
ELEV.	NO V.C.

STA.	8+900
------	-------

STA.	8+822.296	16 247 LT.
ADJUST VALVE BOX		
TOP =	404.325	

STA.	8+821.897	14 082 LT.
ADJUST VALVE BOX		
TOP =	404.300	

PM	404.244
ELEV.	NO V.C.
NO V.C.	

STA.	8+774.804	19 540 LT.
END CONCRETE FLUME AND EROSION MAT. BEG. FULL-WIDTH LIGHT STONE RIPRAP.		

STA.	8+782.514	22 450 M LT.
MATCH EXISTING RIPRAP		

REGRADE EXISTING DRAINAGE DITCH. SEE SHEET 11

STA.	8+740
------	-------

PRJ	404.133
ELEV.	NO V.C.
PM	404.133
ELEV.	NO V.C.

STA.	8+848.932	5 863 RT.
ADJUST SANITARY SEWER MANHOLE		
TOP =	404.120	

STA.	8+865.612	4 570
RT. TO 4.604 LT.		
REMOVE 2.4 m x 0.75 m RCBC AND HEADWALLS		

STA.	8+848.932	5 863 RT.
ADJUST SANITARY SEWER MANHOLE		
TOP =	404.120	

STA.	8+822.296	16 247 LT.
ADJUST VALVE BOX		
TOP =	404.325	

STA.	8+821.897	14 082 LT.
ADJUST VALVE BOX		
TOP =	404.300	

PM	404.244
ELEV.	NO V.C.
NO V.C.	

STA.	8+774.804	19 540 LT.
END CONCRETE FLUME AND EROSION MAT. BEG. FULL-WIDTH LIGHT STONE RIPRAP.		

STA.	8+782.514	22 450 M LT.
MATCH EXISTING RIPRAP		

REGRADE EXISTING DRAINAGE DITCH. SEE SHEET 11

STA.	8+740
------	-------

PRJ	404.174
ELEV.	NO V.C.
PM	

