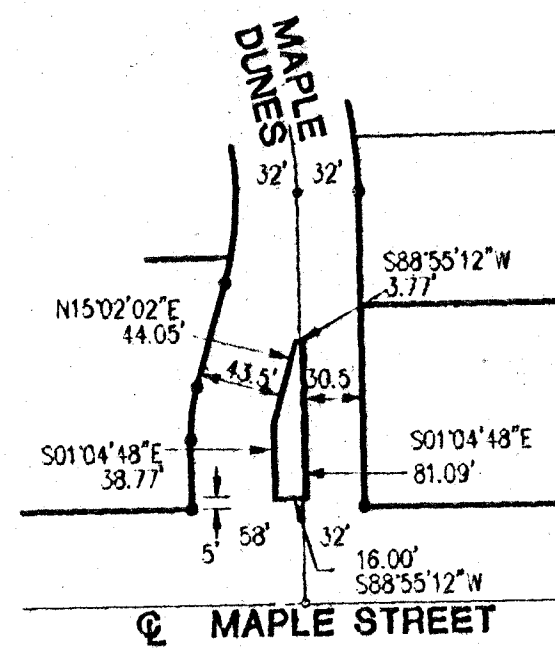


MAPLE DUNES ADDITION

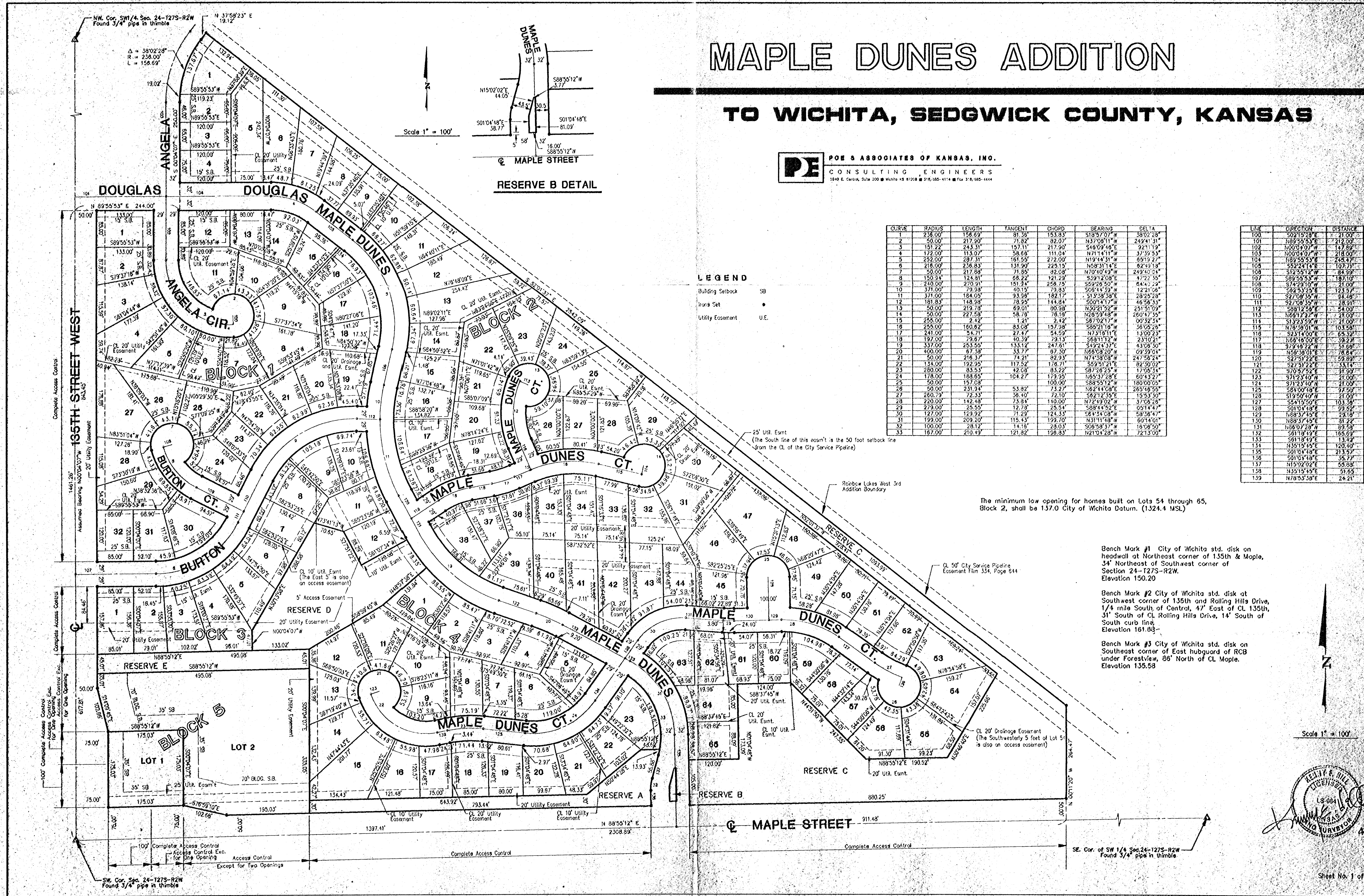
TO WICHITA, SEDGWICK COUNTY, KANSAS

PE POE & ASSOCIATES OF KANSAS, INC.
CONSULTING ENGINEERS
2840 E. Central, Suite 200 • Wichita, KS 67208 • 316.855-4114 • Fax 316.855-4444

Scale 1" = 100'



RESERVE B DETAIL



CURVE	RADIUS	LENGTH	TANGENT	CHORD	BEARING	DELTA
1	238.00	156.69	81.35	153.83	S18°57'07\"	56°02'28\"
2	491.00	217.20	71.82	32.07	N17°10'11\"	24°04'31\"
3	151.22	243.31	157.11	217.90	S49°59'46\"	92°11'19\"
4	172.00	113.07	58.68	111.04	N71°14'11\"	37°39'53\"
5	252.00	287.31	161.55	272.00	N19°14'31\"	89°19'27\"
6	218.00	238.83	131.99	223.15	N68°31'44\"	62°45'19\"
7	50.00	217.88	71.85	92.08	N70°10'43\"	24°40'01\"
8	150.34	124.81	68.22	121.29	S39°12'08\"	47°22'55\"
9	240.00	270.31	151.34	256.75	S59°26'50\"	84°44'22\"
10	371.00	79.28	40.15	79.83	S68°14'59\"	12°21'08\"
11	371.00	184.05	93.58	182.17	S19°38'38\"	28°29'28\"
12	181.83	148.98	78.25	144.84	S00°41'17\"	46°58'33\"
13	50.00	219.78	69.01	90.98	N50°14'32\"	25°15'09\"
14	151.00	227.58	58.78	78.10	N26°59'48\"	26°04'39\"
15	255.00	242.22	121.21	242.22	S87°02'17\"	00°32'51\"
16	255.00	160.82	83.08	157.98	S85°21'16\"	36°05'26\"
17	241.00	54.71	27.47	54.59	N7°18'11\"	13°09'23\"
18	197.00	79.67	40.39	79.13	S69°11'27\"	23°10'21\"
19	337.00	253.55	133.12	247.61	S42°24'37\"	43°08'50\"
20	400.00	67.38	33.77	67.30	N66°08'20\"	09°39'01\"
21	50.00	216.37	74.21	82.93	N74°38'08\"	24°58'24\"
22	134.00	192.29	117.52	176.71	S69°51'21\"	82°30'02\"
23	280.00	83.53	42.68	83.22	S87°28'25\"	17°05'51\"
24	178.00	188.65	104.27	179.95	N65°37'28\"	60°41'27\"
25	50.00	157.08	157.08	100.00	S89°55'12\"	180°00'00\"
26	50.00	231.94	73.27	73.27	S82°14'08\"	285°49'58\"
27	260.79	72.33	36.40	72.10	S82°12'55\"	15°53'30\"
28	220.00	142.48	73.84	142.48	N72°19'02\"	37°05'28\"
29	279.00	25.55	12.78	25.54	S88°14'52\"	09°14'47\"
30	127.00	129.92	71.29	124.33	S84°10'58\"	58°38'47\"
31	132.00	209.20	115.43	199.00	N31°11'48\"	60°14'01\"
32	100.00	28.12	14.18	28.03	S06°53'37\"	16°08'50\"
33	167.00	210.49	121.82	198.83	N21°04'28\"	72°13'09\"

LEGEND
Building Setback SB
Iron Set
Utility Easement U.E.

LINE	DIRECTION	DISTANCE
100	S02°15'28\"	21.00'
101	N69°55'53\"	212.00'
102	N00°04'07\"	147.82'
103	N00°04'07\"	218.00'
104	N69°55'53\"	245.47'
105	S53°11'16\"	102.71'
106	S12°55'12\"	84.92'
107	S89°55'53\"	187.10'
108	S74°23'10\"	21.00'
109	S92°53'25\"	124.95'
110	S27°08'55\"	94.48'
111	S27°08'55\"	28.91'
112	S89°12'58\"	54.00'
113	N68°17'27\"	21.00'
114	S13°23'59\"	21.00'
115	N78°59'01\"	103.58'
116	S23°14'00\"	65.32'
117	N68°18'50\"	123.60'
118	S73°18'22\"	51.68'
119	N58°59'01\"	76.64'
120	S27°51'22\"	59.89'
121	S27°31'22\"	33.14'
122	S70°19'52\"	31.99'
123	S71°23'40\"	21.00'
124	S71°23'40\"	21.00'
125	S84°00'18\"	37.50'
126	S19°59'40\"	21.00'
127	S54°15'50\"	103.38'
128	S01°04'18\"	99.62'
129	N88°37'45\"	23.16'
130	N88°37'45\"	31.23'
131	N86°07'28\"	89.58'
132	S61°18'13\"	165.69'
133	S61°18'13\"	13.42'
134	N55°15'45\"	123.60'
135	S01°04'18\"	213.42'
136	S01°04'18\"	35.77'
137	N15°02'02\"	58.88'
138	N35°15'45\"	31.65'
139	N78°55'58\"	24.21'

The minimum low opening for homes built on Lots 54 through 65, Block 2, shall be 137.0 City of Wichita Datum. (1324.4 MSL)

Bench Mark #1 City of Wichita std. disk on headwall at Northeast corner of 135th & Maple, 34' Northeast of Southwest corner of Section 24-127S-R2W. Elevation 150.20

Bench Mark #2 City of Wichita std. disk at Southwest corner of 135th and Rolling Hills Drive, 1/4 mile South of Central, 47' East of CL 135th, 31' South of CL Rolling Hills Drive, 14' South of South curb line. Elevation 161.83

Bench Mark #3 City of Wichita std. disk on Southeast corner of East hubguard of RCB under Forestview, 86' North of CL Maple. Elevation 135.58

Scale 1" = 100'

