

PRELIMINARY PLAT

MAPLE DUNES ADDITION

SEPTEMBER 25, 1996

DEVELOPER: K. Todd Alam Construction Co., LLC
P.O. Box 116
Wichita, KS 67201

NOTES:

Reserve A is reserved for drainage, entry monuments, walks, walls, landscaping, irrigation, lighting and utilities.

Reserve B is reserved for entry monuments, walls, landscaping, irrigation, lighting and utilities.

Reserve C is reserved for drainage, entry monuments, walks, walls, landscaping, irrigation, lighting and utilities, recreation facilities and ponds.

Reserve D is reserved for swimming pool and related facilities, walks, lighting, walls, landscaping irrigation and utilities.

Visible topography from aerial photography taken 7-12-96 by WESTERN AIR MAPS, INC. LDGA 4454 6425

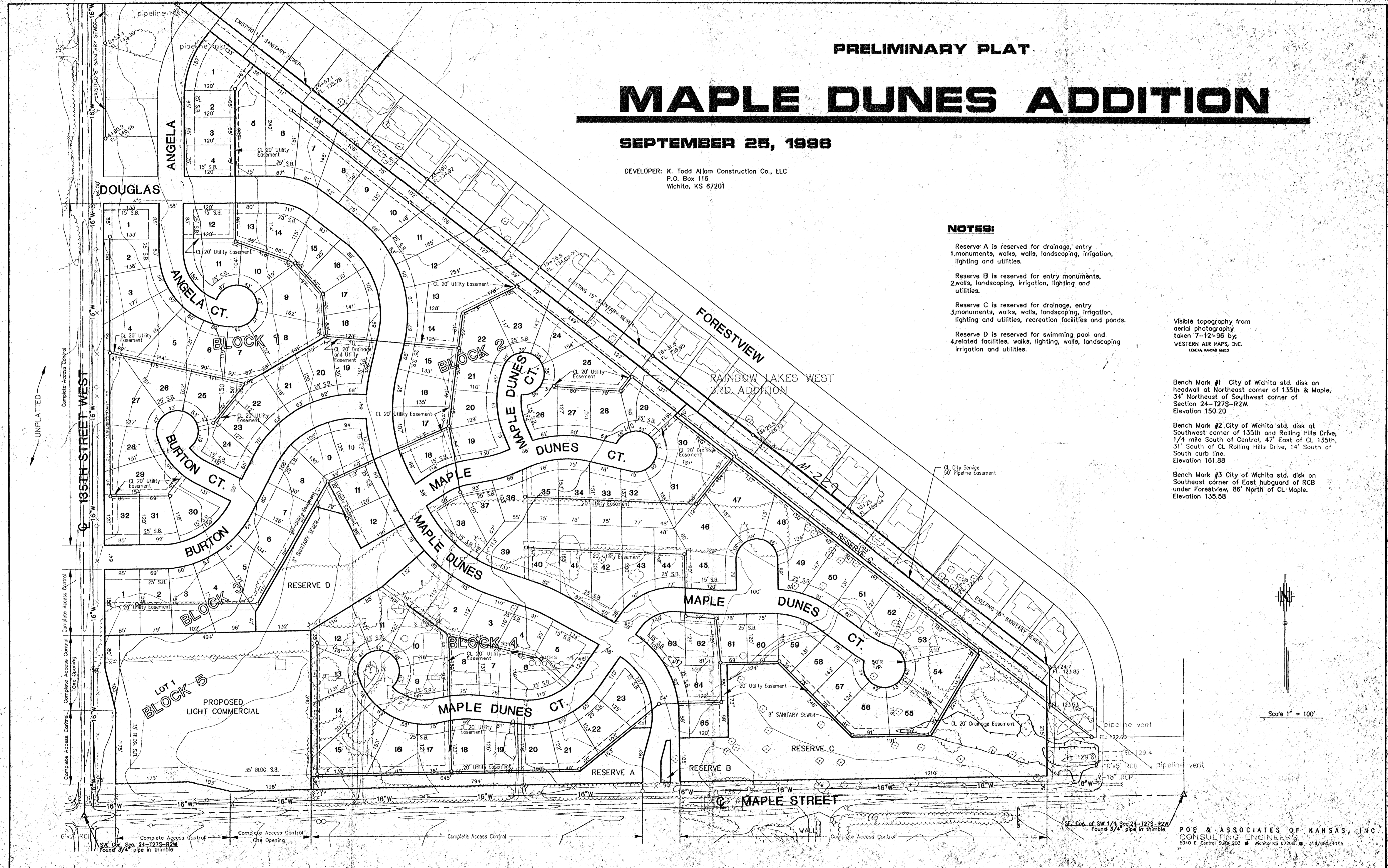
Bench Mark #1 City of Wichita std. disk on headwall at Northeast corner of 135th & Maple, 34' Northeast of Southwest corner of Section 24-127S-R2W. Elevation 150.20

Bench Mark #2 City of Wichita std. disk at Southwest corner of 135th and Rolling Hills Drive, 1/4 mile South of Central, 47' East of CL 135th, 31' South of CL Rolling Hills Drive, 14' South of South curb line. Elevation 161.88

Bench Mark #3 City of Wichita std. disk on Southeast corner of East hubguard of RCB under Forestview, 86' North of CL Maple. Elevation 135.58

Scale 1" = 100'

POE & ASSOCIATES OF KANSAS, INC.
CONSULTING ENGINEERS
5940 E. Central Suite 200 Wichita, KS 67208 316/685-2114



X:\APPROVALS\1996\1996-09-25-12-1996 Nancy Griffith Roe & Assoc.