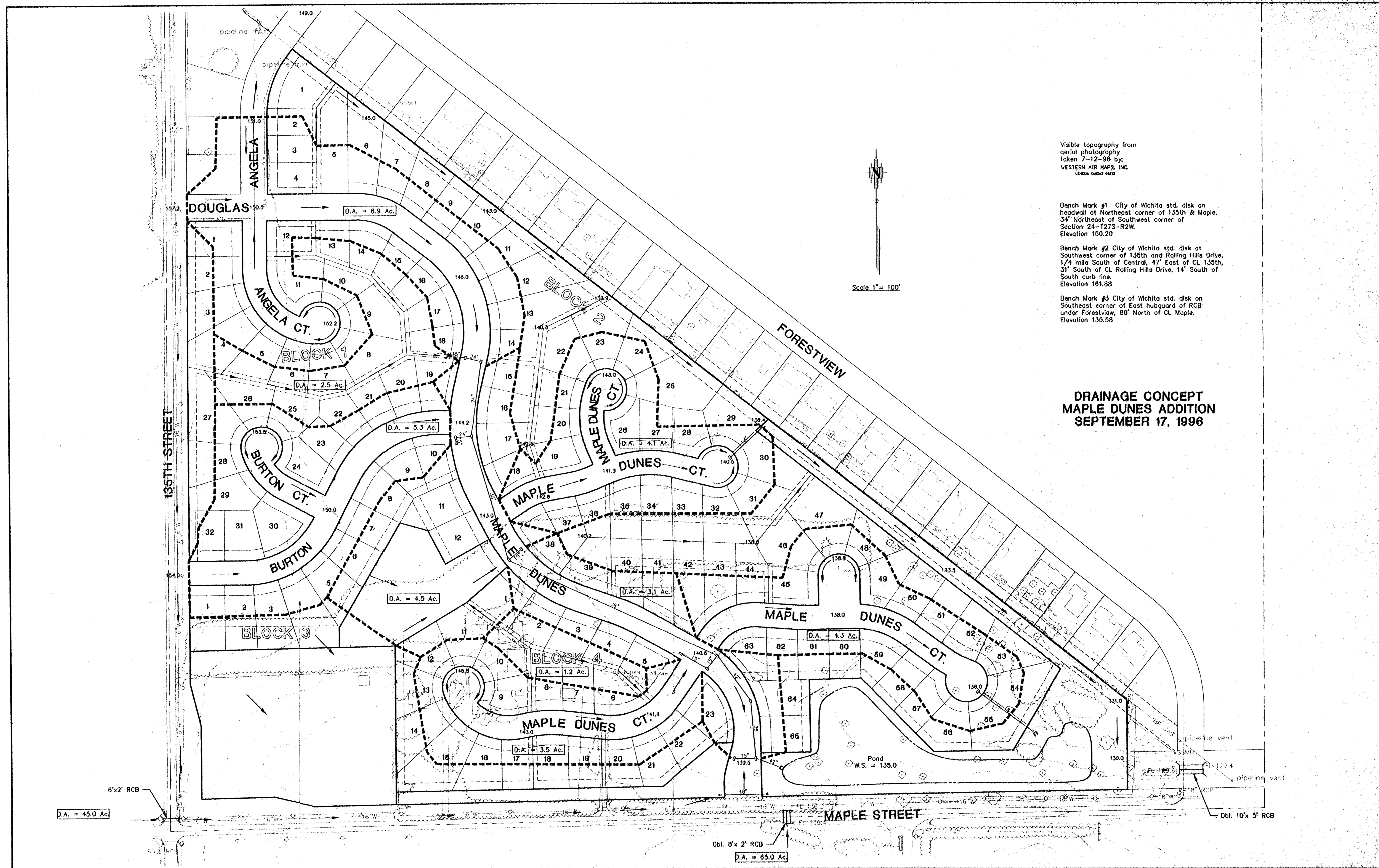


X:\MAPS\DATA\1001\DRAIN Thu Sep 15 16:26:02 1996 Kelly Henderson - Poe and Associates, Inc.

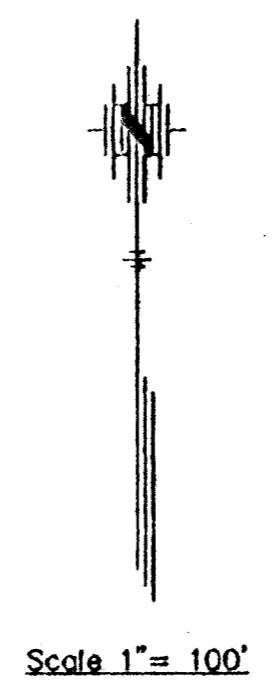


Visible topography from
aerial photography
taken 7-12-96 by:
WESTERN AIR MAPS, INC.
LEWIS, KANSAS 66213

Bench Mark #1 City of Wichita std. disk on
headwall at Northeast corner of 135th & Maple,
34' Northeast of Southwest corner of
Section 24-T27S-R2W.
Elevation 150.20

Bench Mark #2 City of Wichita std. disk at
Southwest corner of 136th and Rolling Hills Drive,
1/4 mile South of Central, 47' East of CL 135th,
31' South of CL Rolling Hills Drive, 14' South of
South curb line.
Elevation 151.88

Bench Mark #3 City of Wichita std. disk on
Southeast corner of East hubguard of RCB
under Forestview, 88' North of CL Maple.
Elevation 135.58



**DRAINAGE CONCEPT
MAPLE DUNES ADDITION
SEPTEMBER 17, 1996**

D.A. = 45.0 Ac

D.A. = 65.0 Ac

pipe line vent

pipe line vent

Obi. 8'x 2' RCB

Obi. 10'x 5' RCB

MAPLE STREET

6'x2' RCB

Pond
W.S. = 135.0

135TH STREET

DOUGLAS

ANGELA

FORESTVIEW

ANGELA CT.

BURTON CT.

MAPLE DUNES CT.

MAPLE DUNES CT.

MAPLE DUNES CT.

BLOCK 3

BLOCK 4

BLOCK 2

BLOCK 1

MAPLE DUNES CT.

MAPLE DUNES CT.

MAPLE DUNES CT.

MAPLE DUNES CT.

DOUGLAS

ANGELA

149.0

145.0

143.0

146.0

140.3

143.0

140.5

141.9

143.0

140.2

143.0

140.6

143.0

141.8

143.0

139.5

D.A. = 6.9 Ac.

D.A. = 2.5 Ac.

D.A. = 5.3 Ac.

D.A. = 4.1 Ac.

D.A. = 3.1 Ac.

D.A. = 4.5 Ac.

D.A. = 1.2 Ac.

D.A. = 3.5 Ac.

D.A. = 4.3 Ac.

FL 129.4

FL 129.5

FL 129.6

FL 129.7

FL 129.8

FL 129.9

FL 129.0

FL 129.1

FL 129.2

FL 129.3

FL 129.4

FL 129.5

FL 129.6

FL 129.7

FL 129.8

FL 129.9

FL 129.0

FL 129.1

FL 129.2

FL 129.3

FL 129.4

FL 129.5

FL 129.6

FL 129.7

FL 129.8

FL 129.9

FL 129.0

FL 129.1

FL 129.2

FL 129.3

FL 129.4

FL 129.5

FL 129.6

FL 129.7

FL 129.8

FL 129.9

FL 129.0

FL 129.1

FL 129.2

FL 129.3

FL 129.4

FL 129.5

FL 129.6

FL 129.7

FL 129.8

FL 129.9

FL 129.0

FL 129.1

FL 129.2

FL 129.3

FL 129.4

FL 129.5

FL 129.6

FL 129.7

FL 129.8

FL 129.9

FL 129.0

FL 129.1

FL 129.2

FL 129.3

FL 129.4

FL 129.5

FL 129.6

FL 129.7

FL 129.8

FL 129.9

FL 129.0

FL 129.1

FL 129.2

FL 129.3

FL 129.4

FL 129.5

FL 129.6

FL 129.7

FL 129.8

FL 129.9

FL 129.0

FL 129.1

FL 129.2

FL 129.3

FL 129.4

FL 129.5

FL 129.6

FL 129.7

FL 129.8

FL 129.9

FL 129.0

FL 129.1

FL 129.2

FL 129.3

FL 129.4

FL 129.5

FL 129.6

FL 129.7

FL 129.8

FL 129.9

FL 129.0

FL 129.1

FL 129.2

FL 129.3

FL 129.4

FL 129.5

FL 129.6

FL 129.7

FL 129.8

FL 129.9

FL 129.0

FL 129.1

FL 129.2

FL 129.3

FL 129.4

FL 129.5

FL 129.6

FL 129.7

FL 129.8

FL 129.9

FL 129.0

FL 129.1

FL 129.2

FL 129.3

FL 129.4

FL 129.5

FL 129.6

FL 129.7

FL 129.8

FL 129.9

FL 129.0

FL 129.1

FL 129.2

FL 129.3

FL 129.4

FL 129.5

FL 129.6

FL 129.7

FL 129.8

FL 129.9

FL 129.0

FL 129.1

FL 129.2

FL 129.3

FL 129.4

FL 129.5

FL 129.6

FL 129.7

FL 129.8

FL 129.9

FL 129.0

FL 129.1

FL 129.2

FL 129.3

FL 129.4

FL 129.5

FL 129.6

FL 129.7

FL 129.8

FL 129.9

FL 129.0

FL 129.1

FL 129.2

FL 129.3

FL 129.4

FL 129.5

FL 129.6

FL 129.7

FL 129.8

FL 129.9

FL 129.0

FL 129.1

FL 129.2

FL 129.3

FL 129.4

FL 129.5

FL 129.6

FL 129.7

FL 129.8

FL 129.9

FL 129.0

FL 129.1

FL 129.2

FL 129.3

FL 129.4

FL 129.5

FL 129.6

FL 129.7

FL 129.8

FL 129.9

FL 129.0

FL 129.1

FL 129.2

FL 129.3

FL 129.4

FL 129.5

FL 129.6

FL 129.7

FL 129.8

FL 129.9

FL 129.0

FL 129.1

FL 129.2

FL 129.3

FL 129.4