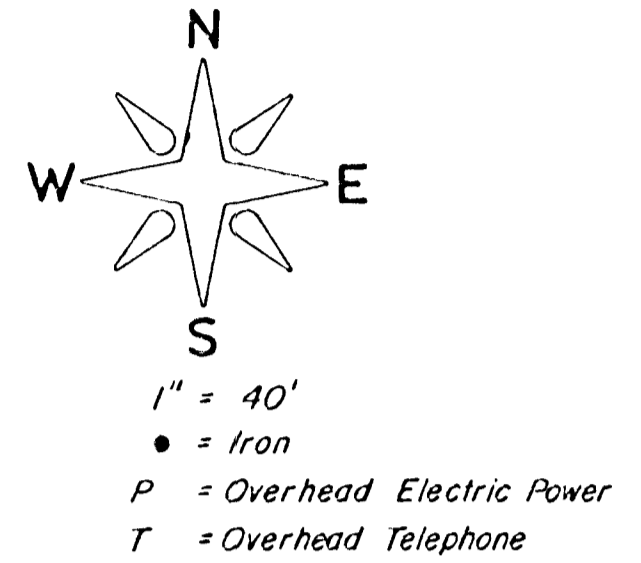
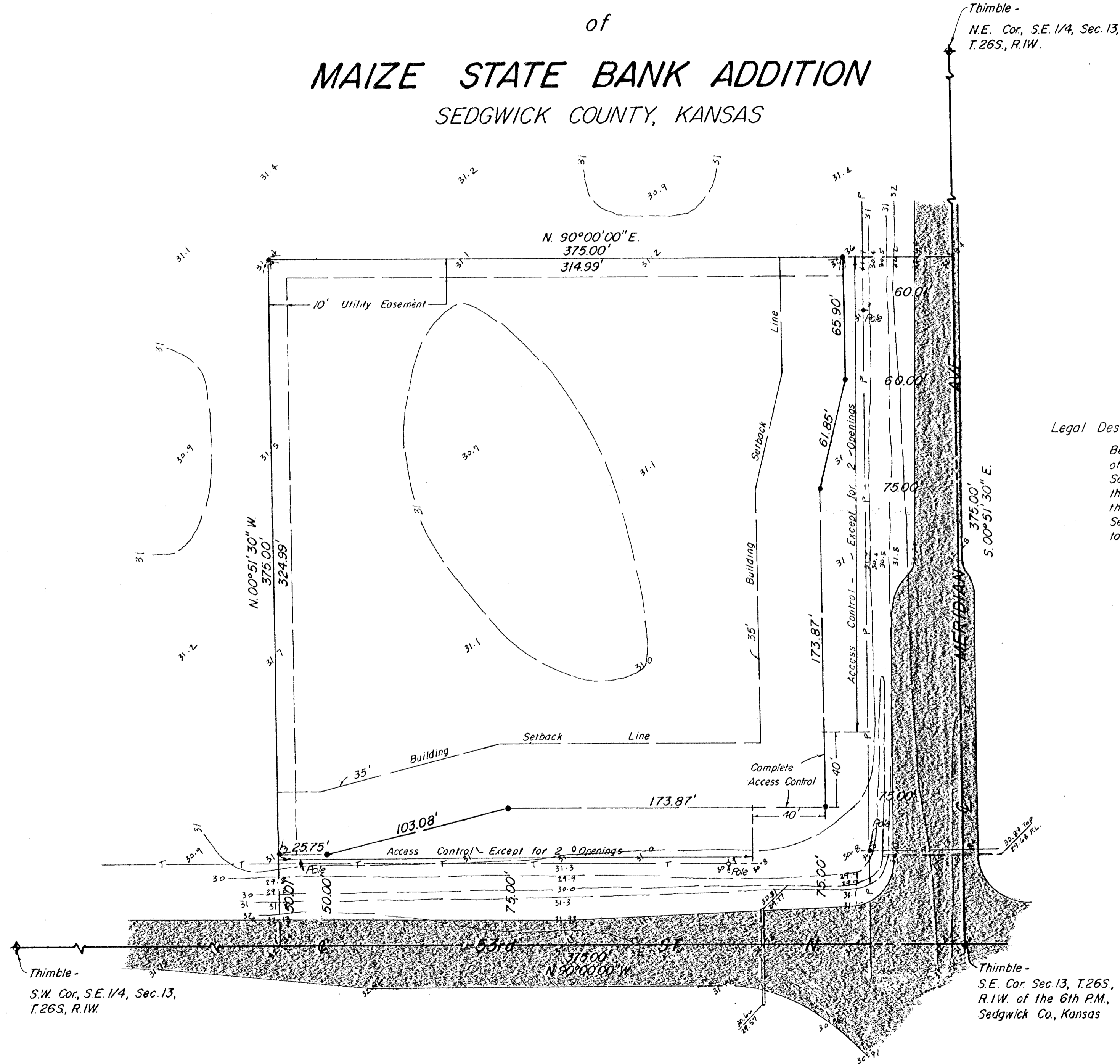


PRELIMINARY PLAT
of
MAIZE STATE BANK ADDITION
SEDGWICK COUNTY, KANSAS



Legal Description -

Beginning at the S.E. Cor. of the S.E. 1/4 of Sec. 13, T.26S., R.1W of the 6th P.M., Sedgwick County, Kansas, thence West along the South line of said Section, 375 feet; thence North parallel to the East line of said Section, 375 feet; thence East parallel to the South line of said Section, 375 feet to the East line of said Section; thence South along the East line of said Section, 375 feet to beginning.

Norman Moehring
MOEHRING & ASSOCIATES
CONSULTING ENGINEERS
WICHITA
SEPT. 1982
82-096-SD

BENCH MARK -

U.S.G.S. Standard Tablet located 478' S.
& 28' W. of intersection of Meridian Ave.
& 53rd ST. N. Elev. 1331.25 M.S.L.

Thimble -
S.W. Cor. S.E. 1/4, Sec. 13,
T.26S., R.1W.

Thimble -
S.E. Cor. Sec. 13, T.26S.,
R.1W. of the 6th P.M.,
Sedgwick Co., Kansas