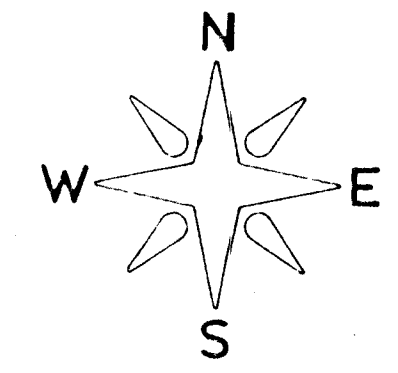
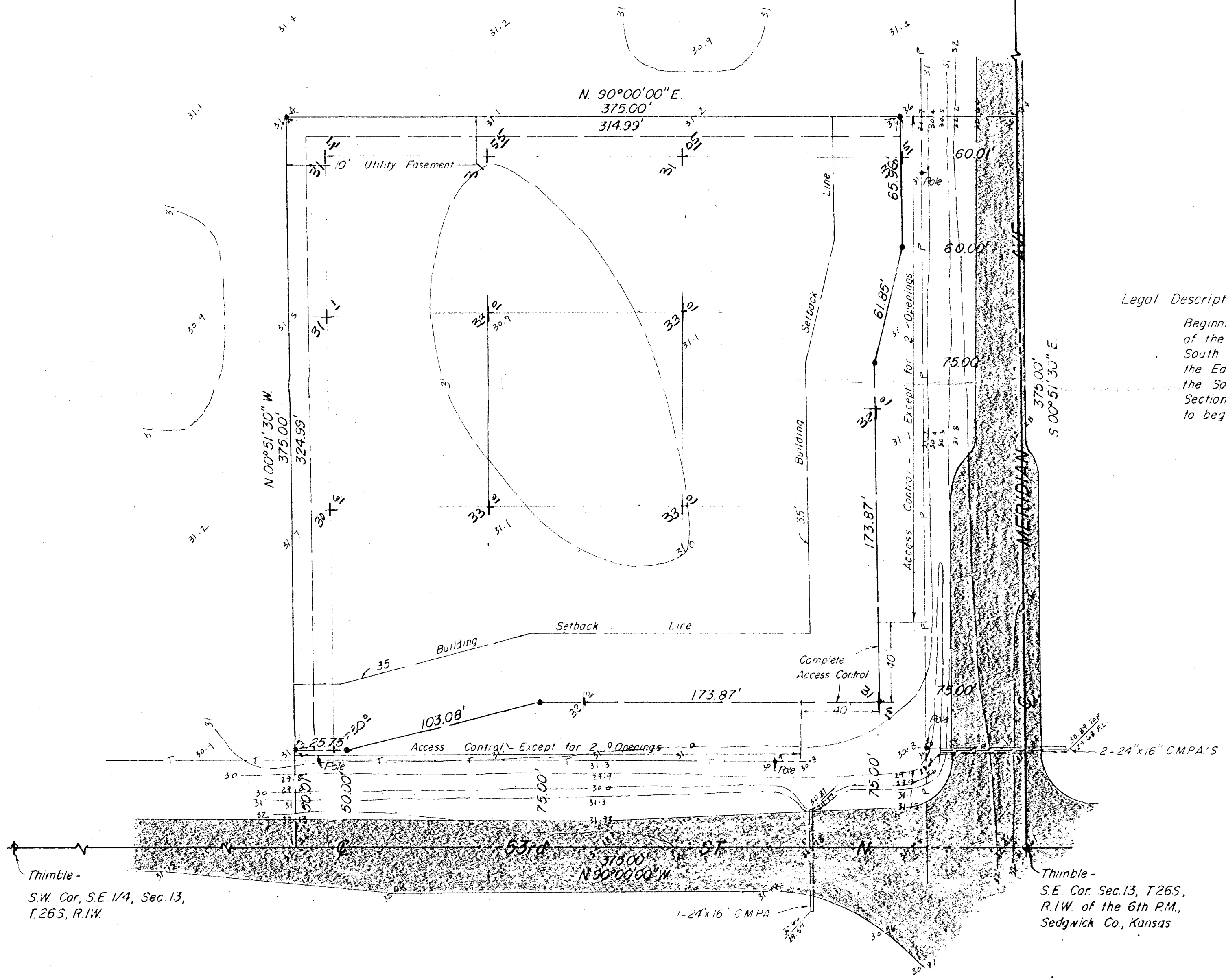


PRELIMINARY PLAT
of
MAIZE STATE BANK ADDITION
SEDGWICK COUNTY, KANSAS

Thimble -
N.E. Cor, SE 1/4, Sec. 13,
T.26S, R.1W.



1" = 40'
• = Iron
P = Overhead Electric Power
T = Overhead Telephone



Legal Description -

Beginning at the S.E. Cor. of the SE. 1/4 of Sec. 13, T.26S, R.1W of the 6th P.M., Sedgwick County, Kansas, thence West along the South line of said Section, 375 feet; thence North parallel to the East line of said Section, 375 feet; thence East parallel to the South line of said Section, 375 feet to the East line of said Section; thence South along the East line of said Section, 375 feet to beginning

Walter Moehring
MOEHRING & ASSOCIATES
CONSULTING ENGINEERS
WICHITA
SEPT. 1982
82-096-SD

Thimble -
S.W. Cor, SE. 1/4, Sec. 13,
T.26S, R.1W.

Thimble -
S.E. Cor. Sec. 13, T.26S,
R.1W. of the 6th P.M.,
Sedgwick Co, Kansas

BENCH MARK -
USGS Standard Tablet located 478' S
& 28' W of intersection of Meridian Ave.
& 53rd ST. N. Elev. 1331.25 M.S.L.

SITE GRADING PLAN 9/27/82
Clear City Eng. Engr's Files