

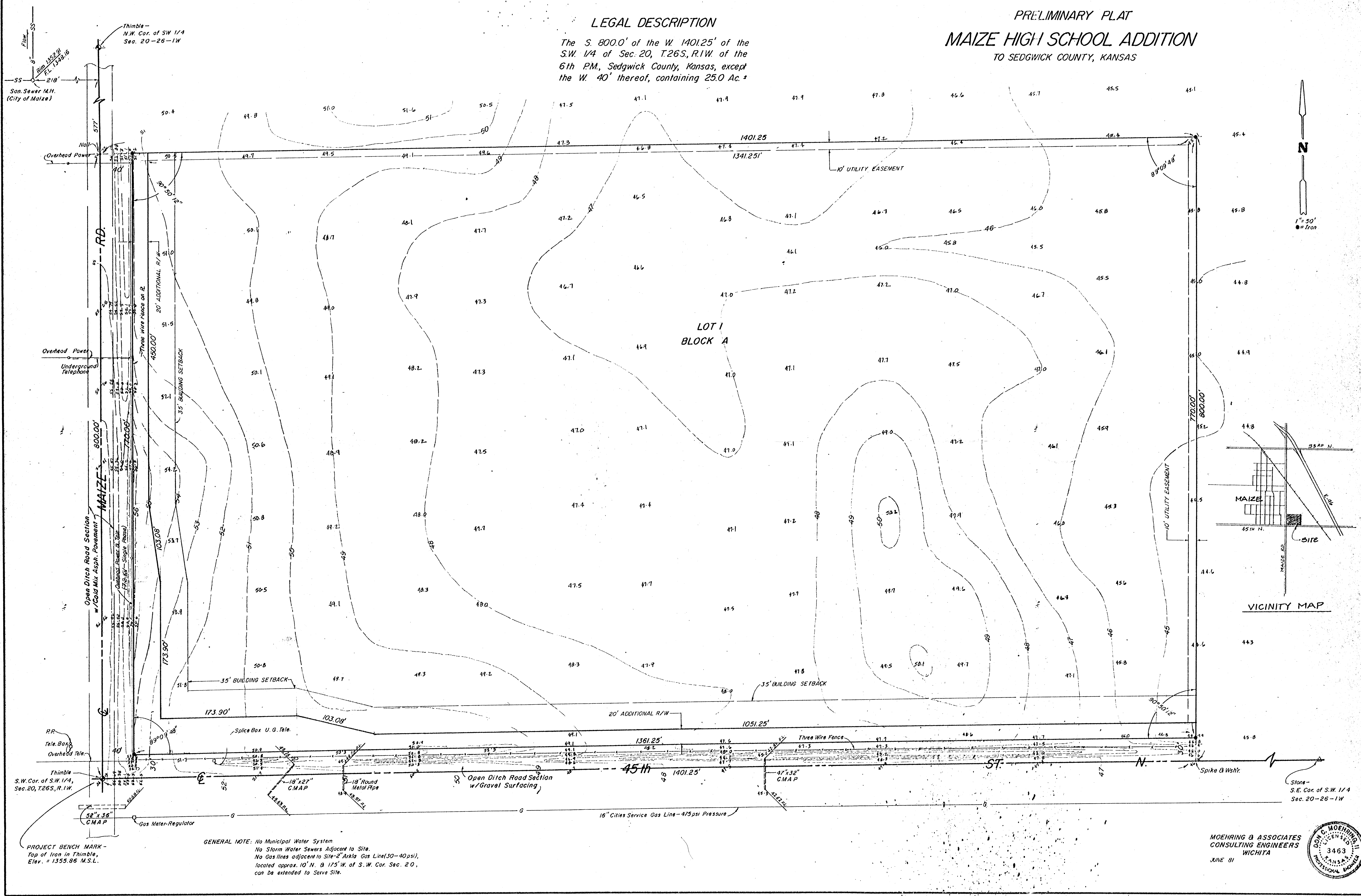
**LEGAL DESCRIPTION**

The S. 800.0' of the W. 1401.25' of the S.W. 1/4 of Sec. 20, T.26S, R.1W. of the 6th P.M., Sedgwick County, Kansas, except the W. 40' thereof, containing 25.0 Ac. ±

**PRELIMINARY PLAT**

**MAIZE HIGH SCHOOL ADDITION**

TO SEDGWICK COUNTY, KANSAS



Thimble - N.W. Cor. of SW 1/4 Sec. 20-26-1W  
San Sewer M.H. (City of Maize)  
Overhead Power  
Underground Telephone

PROJECT BENCH MARK - Top of Iron in Thimble, Elev. = 1355.86 M.S.L.  
Gas Meter-Regulator  
15" Cities Service Gas Line-475psi Pressure

**GENERAL NOTE:** No Municipal Water System  
No Storm Water Sewers Adjacent to Site.  
No Gas Lines adjacent to Site-2" Arkla Gas Line(30-40psi), located approx. 10' N. & 175' W. of S.W. Cor. Sec. 20, can be extended to Serve Site.

MOEHRING & ASSOCIATES  
CONSULTING ENGINEERS  
WICHITA  
JUNE 81

