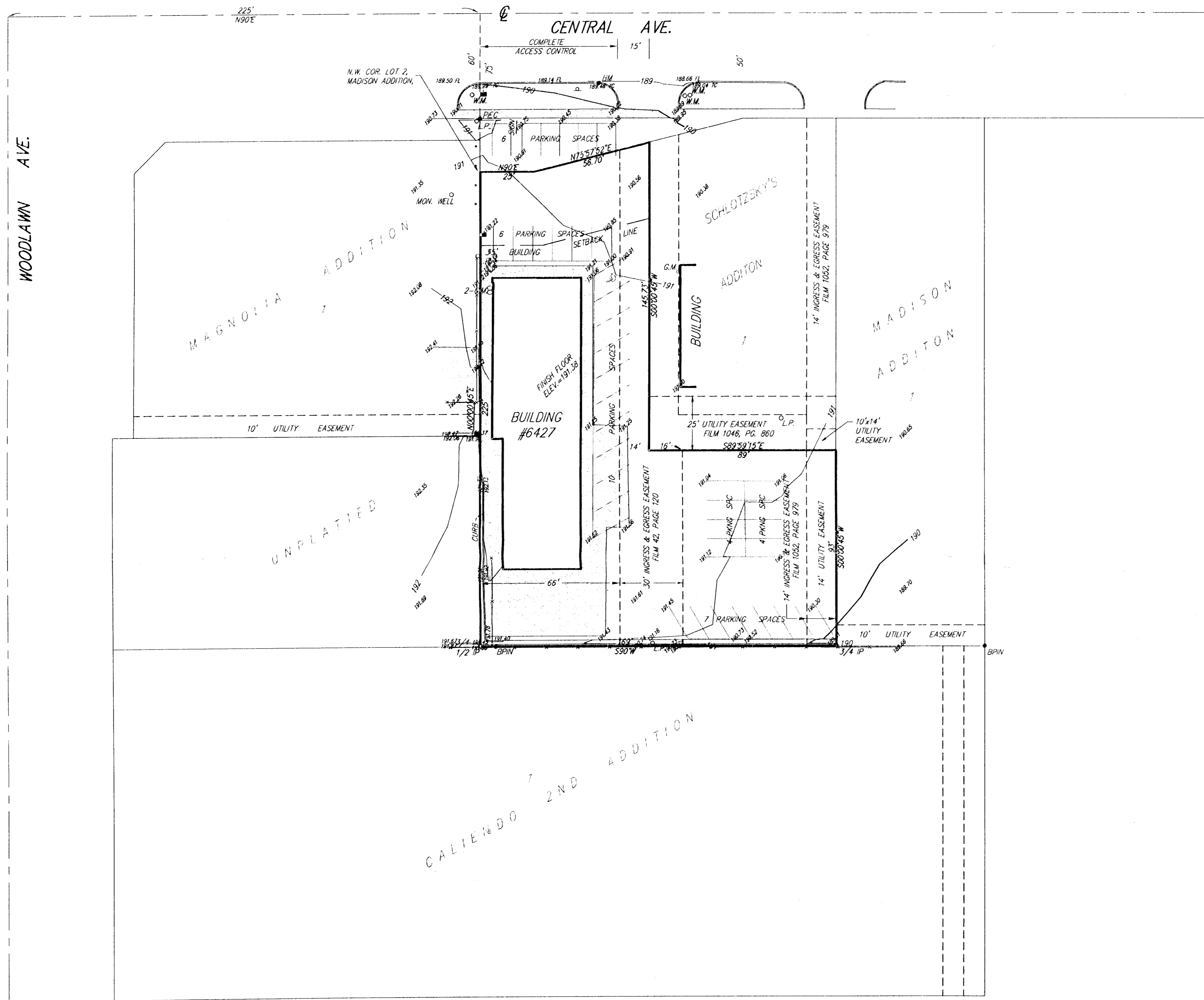


23
J-145

SKETCH PLAT MADISON 2ND ADDITION

WICHITA, SEDGWICK COUNTY, KANSAS



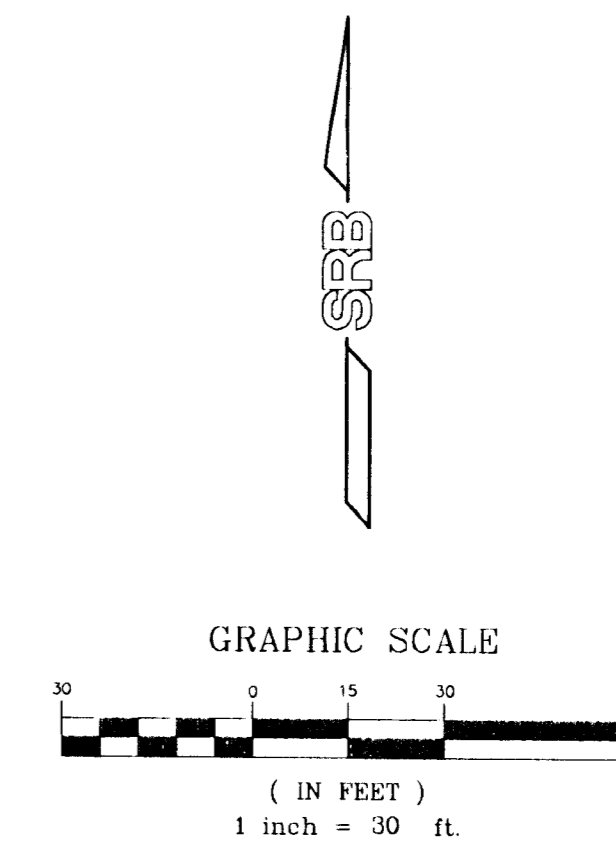
DESCRIPTION:

Lot 2, Madison Addition, Wichita, Kansas, Sedgwick County, Kansas; except the south 165 feet thereof, and except that part of Lot 2, described as: Beginning at the N.E. Corner of said Lot 2; thence S00°W along the east line of said Lot 2, 157 feet; thence S90°W, 89 feet; thence N00°E, 145.73 feet to a point on the north line of said Lot 2; thence N75°57'07"E along the north line of said Lot 2, 46.39 feet to a deflection point in said north line; thence N89°59'15"E, 44 feet to the place of beginning.

GROSS SIZE:
26,655.99 Sq. Ft. ±
0.61 Acres ±

Jack Pearce
P.O. Box 780005
Wichita, Kansas 67278

Ph. 687-9789



BENCH MARK:
City of Wichita, Standard Disc
162' S & 34' W of
Intersection of Centerlines of
Woodlawn & Central
Elev.=192.72 (City Datum)
Elev.=1380.12 (N.G.V.D.)