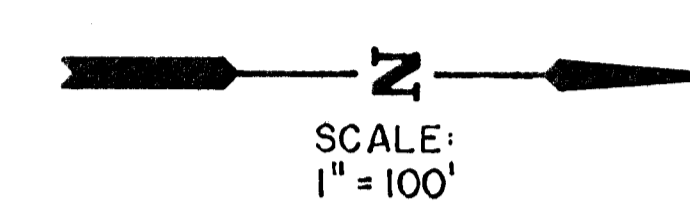
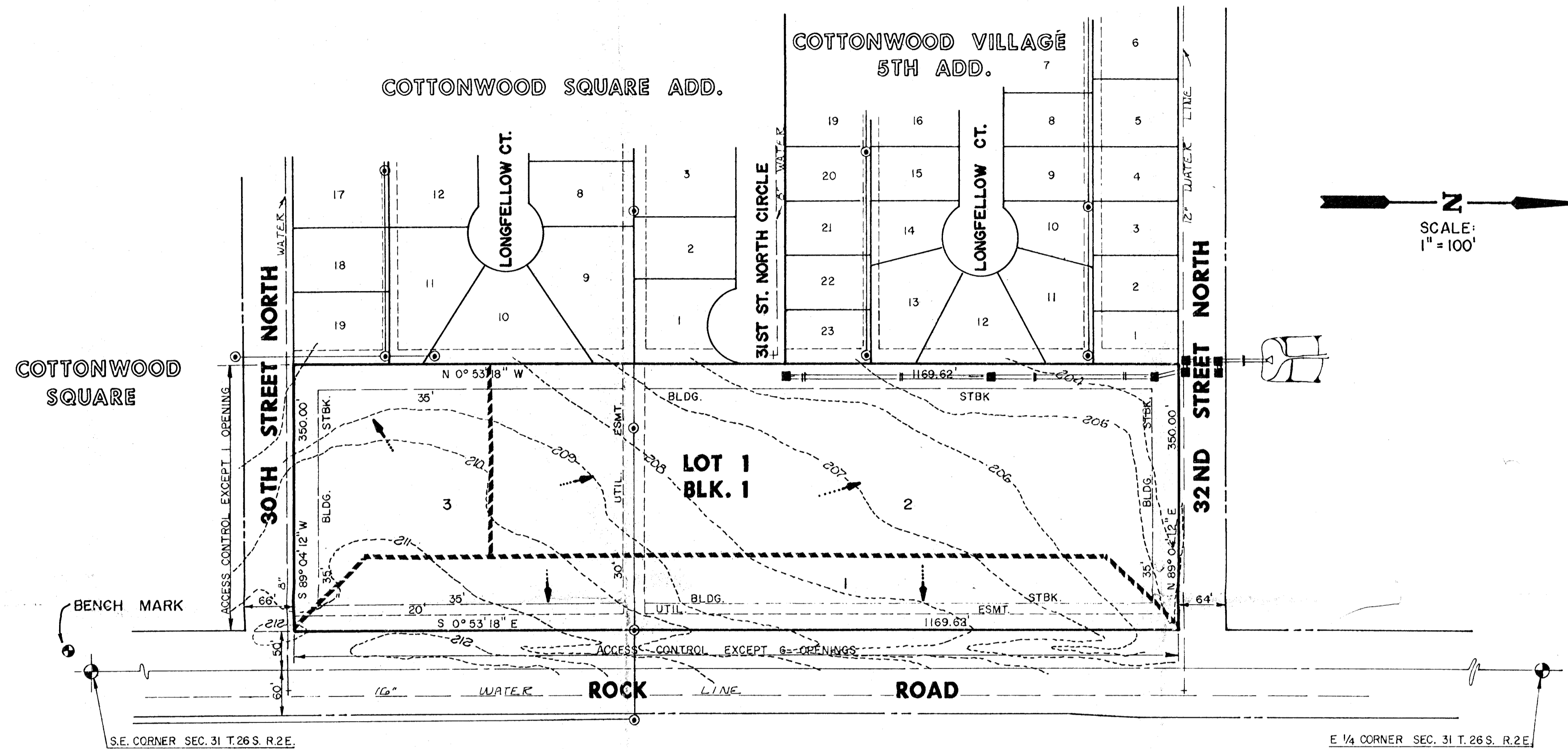
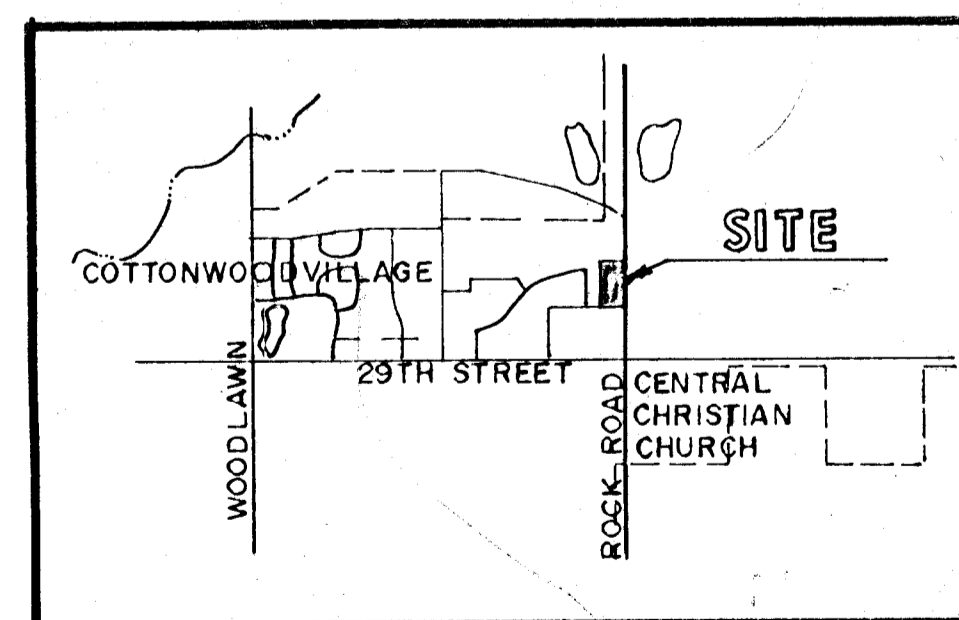


DRAINAGE & UTILITY CONCEPT KILLARNEY FIRST ADDITION



UNPLATTED

THE RENAISSANCE



LOCATION MAP

NOTES:

Owner: Killarney Investments Inc.
8400 Killarney Place

Topographic Survey: 8/86

Bench Mark: Southwest corner of Rock Road and 29th Street North
Railroad Spike in power pole
Elev = 213.703

Proposed Zoning: L.C.

	KILLARNEY FIRST ADDITION DRAINAGE & UTILITY CONCEPT	Design Drawn by Checked by Date Job no.
	MID-KANSAS ENGINEERING CONSULTANTS PA 3500 NORTH ROCK ROAD BUILDING #800 WICHITA, KANSAS 67226	682-6561 Sheet of