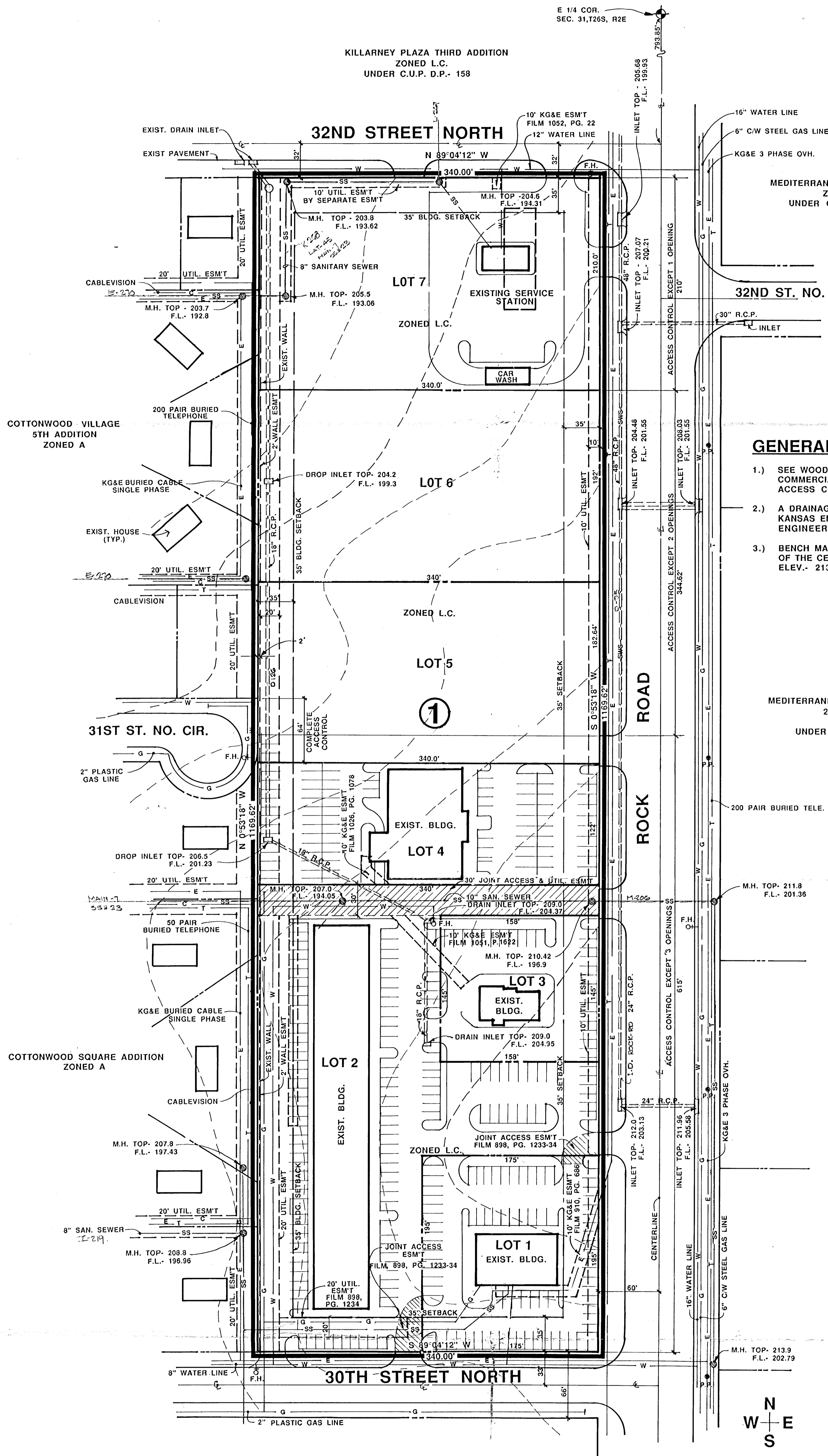


KILLARNEY PLAZA THIRD ADDITION
ZONED L.C.
UNDER C.U.P. D.P.- 158



GENERAL NOTES :

- 1.) SEE WOODLAWN DEVELOPMENT COMPANY PARCEL 11 A & 12 COMMERCIAL C.U.P. FOR REQUIREMENTS ON SETBACKS, ACCESS CONTROLS, WALLS, ETC...
- 2.) A DRAINAGE CONCEPT PLAN SHALL BE PREPARED BY MID-KANSAS ENGINEERING CO. AND SUBMITTED TO THE CITY ENGINEER.
- 3.) BENCH MARK: CITY STANDARD DISC, 44' SOUTH AND 48' WEST OF THE CENTERLINE OF 29TH ST. NORTH & ROCK ROAD. ELEV.- 213.30

MEDITERRANEAN PLAZA COMMERCIAL
2ND ADDITION
ZONED L.C.
UNDER C.U.P., D.P.- 111

SCALE: 1"=50'-0"
CONTOUR INTERVAL- 1'
TOTAL AREA : 9.13 ACRES

PRELIMINARY PLAT (A REPLAT OF KILLARNEY FIRST ADDITION)
KILLARNEY SECOND ADDITION

OWNER: KILLARNEY INVESTMENTS, INC. 224 E. DOUGLAS, SUITE 333, WICHITA, KANSAS, 67202 PH. (316) 263-5781

